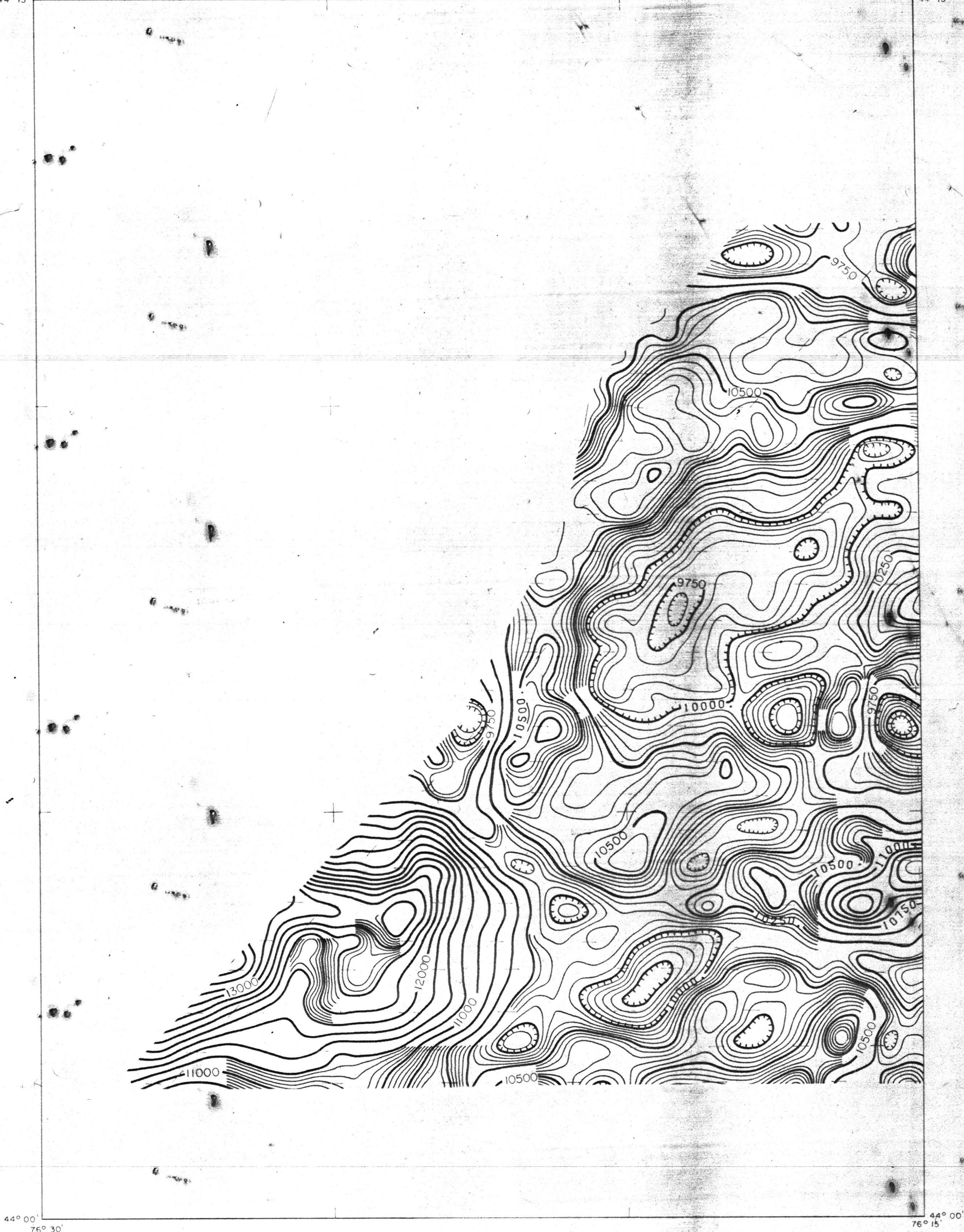


76° 30'
44° 15'

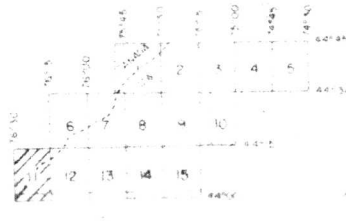
76° 15'
44° 15'



44° 00'
76° 30'

44° 00'
76° 15'

TOTAL FIELD CONTOURS
50 GAMMA
240 GAMMA
FLIGHT LINE DIRECTION
FLIGHT LINE SPACING
FLIGHT ALTITUDE
MAGNETOMETER AIRMAG MARK II
REGINA FIELD REMOVED IGRF 1965
UPDATED TO 1974



SCALE 1:62,500
2 INCHES
1975
LAST

AEROMAGNETIC SURVEY
OF
OGDENSBURG, N.Y. AREA
FOR
UNITED STATES GEOLOGICAL SURVEY
FLOWN 1974 BY AIRMAG SURVEYS, INC.
COMPILED 1974-1975 BY LKB RESOURCES, INC.



SHEET 11 OF 15
Cape Vincent quadrangle N.Y.

U.S. Geological Survey
OPEN FILE MAP 75-526
This map is preliminary and has not
been edited for conformity with
Geological Survey standards or
nomenclature.

APPROXIMATE MEAN DECLINATION 1974
MILITATION OF FIELD DATA
APPROXIMATE TOTAL INTENSITY 56,822 GAMMAS

*New York (Ogdensburg area), aeromagnetic, 1:62,500, 1975
sheet 11
cop. 2
75-526M*