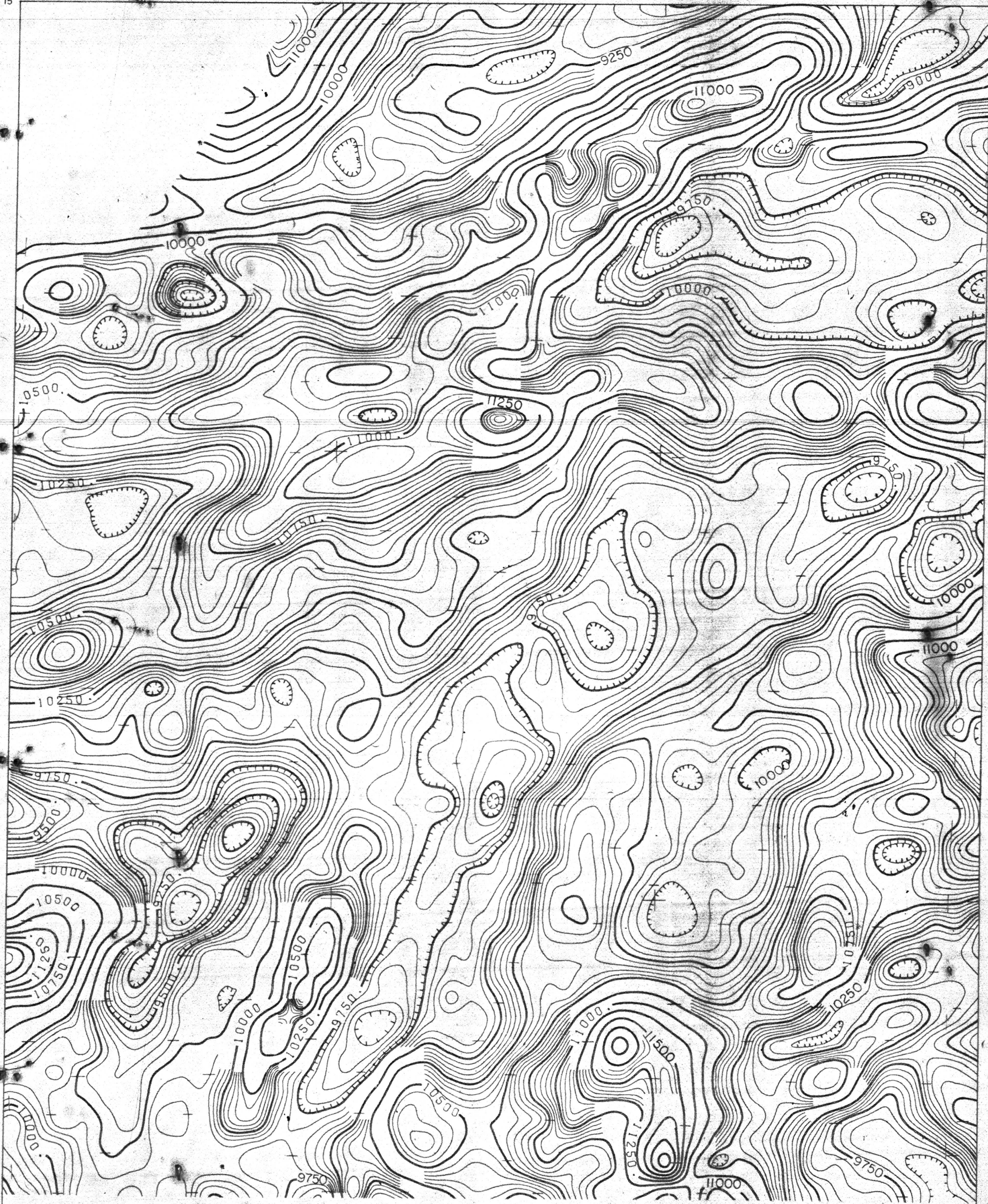


76° 15'
44° 15'

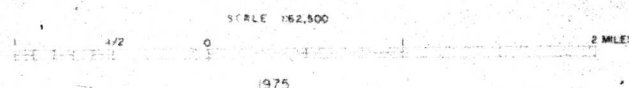
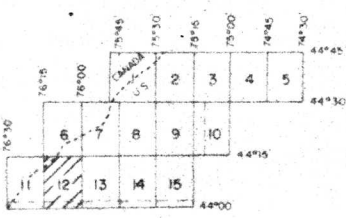
76° 00'
44° 15'



44° 00'
76° 15'

44° 00'
76° 00'

TOTAL FIELD CONTOURS
50 GAMMA
250 GAMMA
FLIGHT LINE DIRECTION
FLIGHT LINE SPACING
FLIGHT ALTITUDE
MAGNETOMETER AIRMAG MARK III
REGIONAL FIELD REMOVED IGRF 1965
UPDATED TO 1974



AEROMAGNETIC SURVEY
OF
OGDENSBURG, N.Y. AREA
FOR
UNITED STATES GEOLOGICAL SURVEY
FLOWN 1974 BY AIRMAG SURVEYS INC.
COMPILED 1974/1975 BY LKB RESOURCES, INC.

SHEET 12 OF 15

Clayton quadrangle, N.Y.

U.S. Geological Survey
OPEN FILE MAP 75-526
This map is preliminary and has not
been edited for conformity with
Geological Survey standards or
nomenclature.

APPROXIMATE MEAN DECLINATION 1974
INCLINATION OF FIELD 74°N
APPROXIMATE TOTAL INTENSITY 50,000 GAMMAS

New York (Ogdensburg area), Aeromagnetic, 1:62,500, 1975.
Sheet 12
Cop. 2
75-526 m