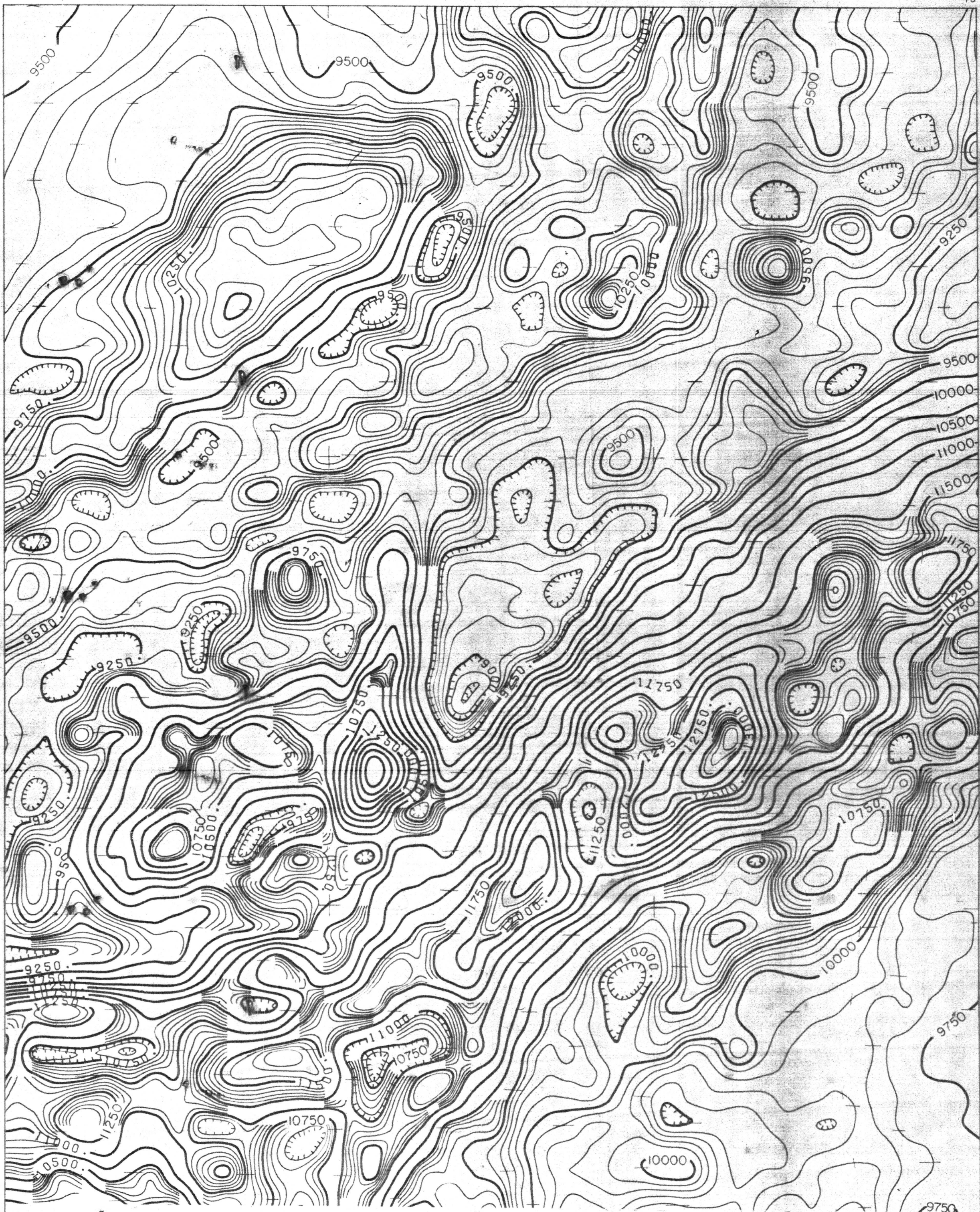


75° 30'
44° 15'

75° 15'
44° 15'



44° 00'
75° 30'

44° 00'
75° 15'

TOTAL FIELD CONTOURS
 50 GAMMA
 250 GAMMA
 EAST-WEST
 FLIGHT LINE DIRECTION
 1/2 MILE
 FLIGHT LINE SPACING
 MAGNETOMETER AIRMAG MARK IV
 REGIONAL FIELD REMOVED IGRF 1965
 UPDATED TO 1974



SCALE 1:62,500

AEROMAGNETIC SURVEY
 OF
 OGDENSBURG, N.Y. AREA

UNITED STATES GEOLOGICAL SURVEY

FLOWN 1974 BY AIRMAG SURVEYS INC
 COMPILED 1974/1975 BY LRB RESOURCES, INC

SHEET 15 OF 15

Lake Bonaparte quadrangle, N.Y.

U.S. Geological Survey
 OPEN FILE MAP 75-526
 This map is preliminary and has not
 been edited for conformity with
 Geological Survey standards or
 nomenclature.

APPROXIMATE MEAN DECLINATION 1974
 INCLINATION OF FIELD MARK
 APPROXIMATE TOTAL INTENSITY 76,000 GAMMA



New York (Ogdensburg area), Aeromagnetic, 1:62,500, 1975,
 sheet 15
 exp. 2
 75-526 m