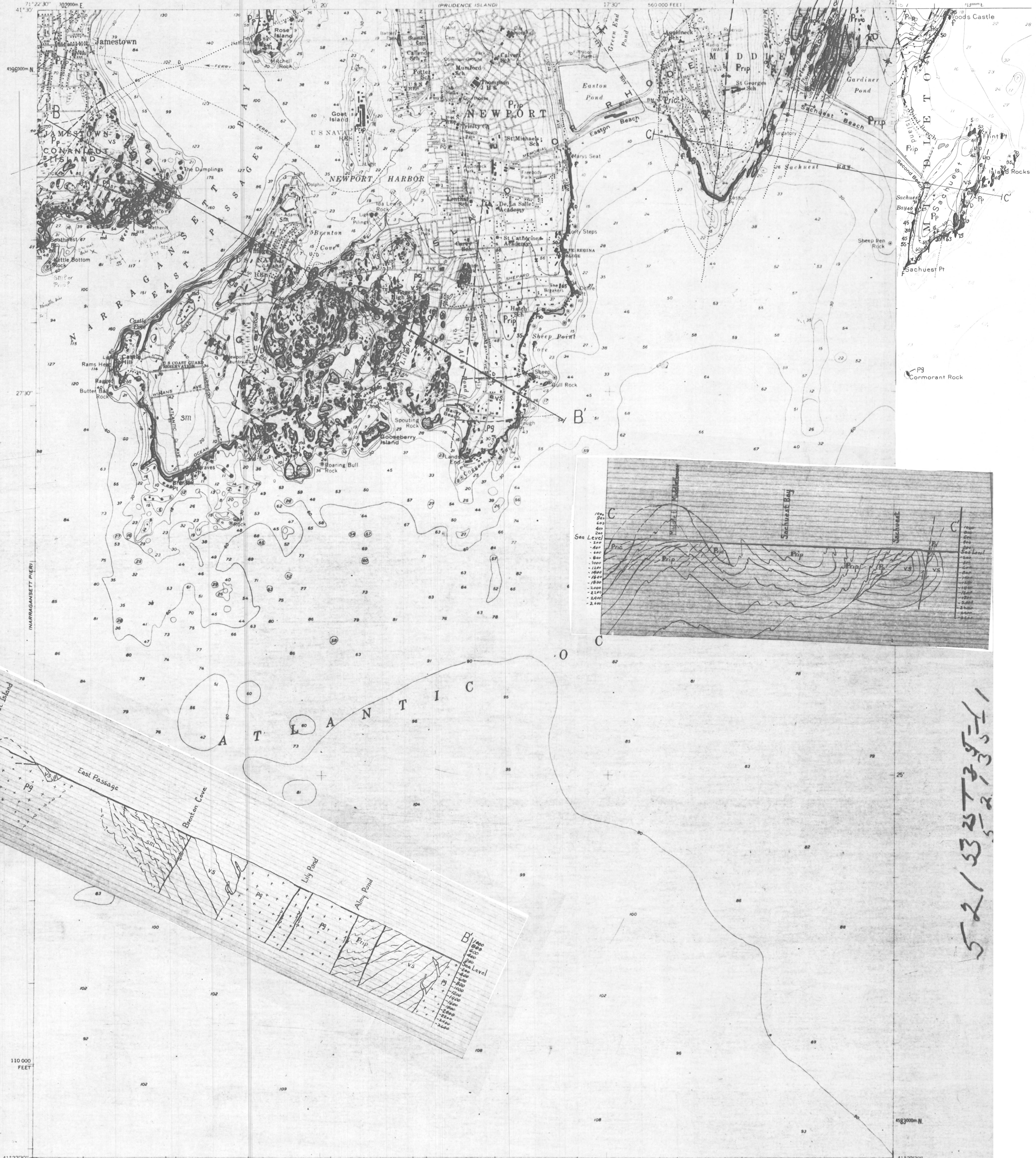
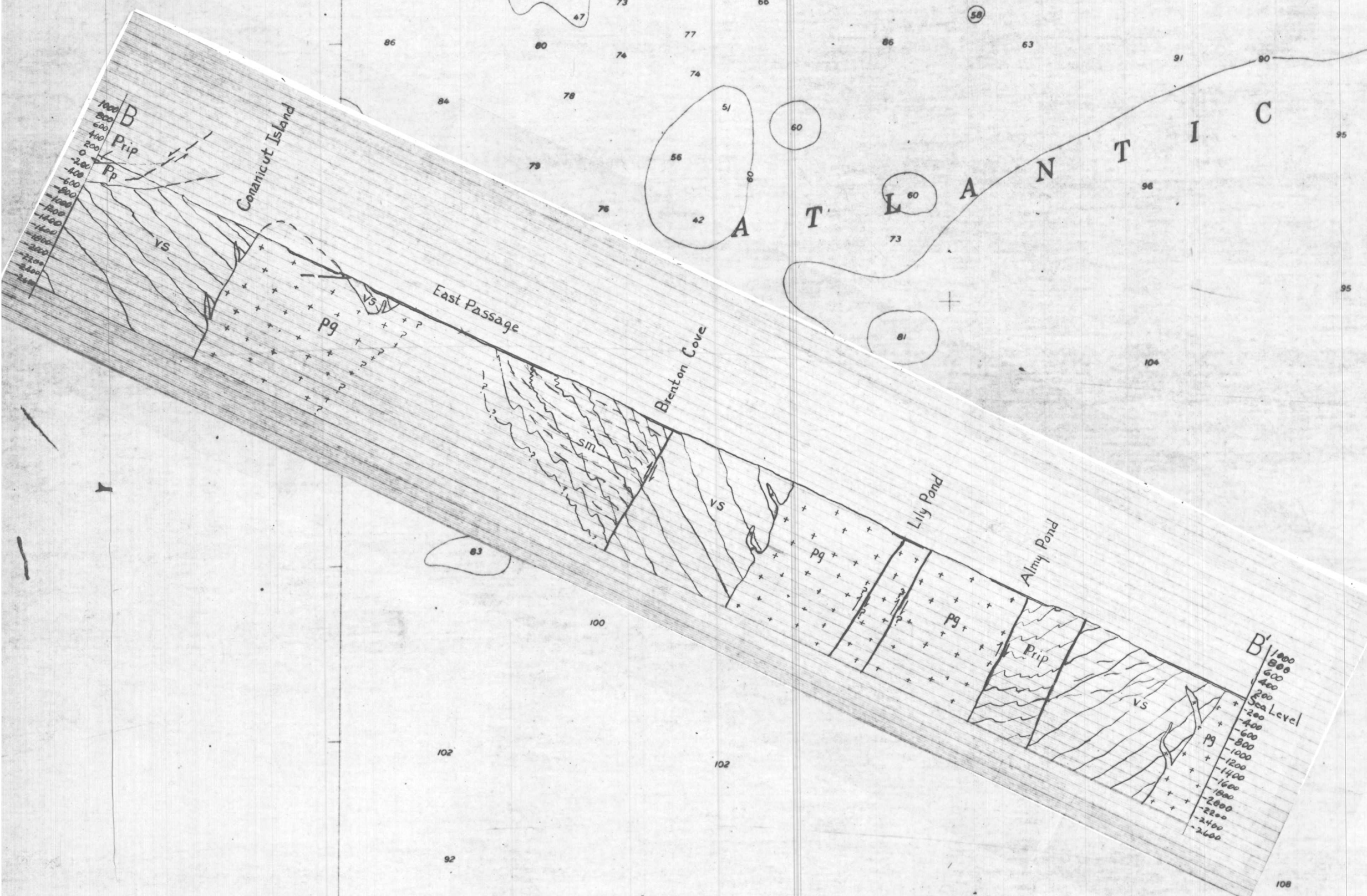
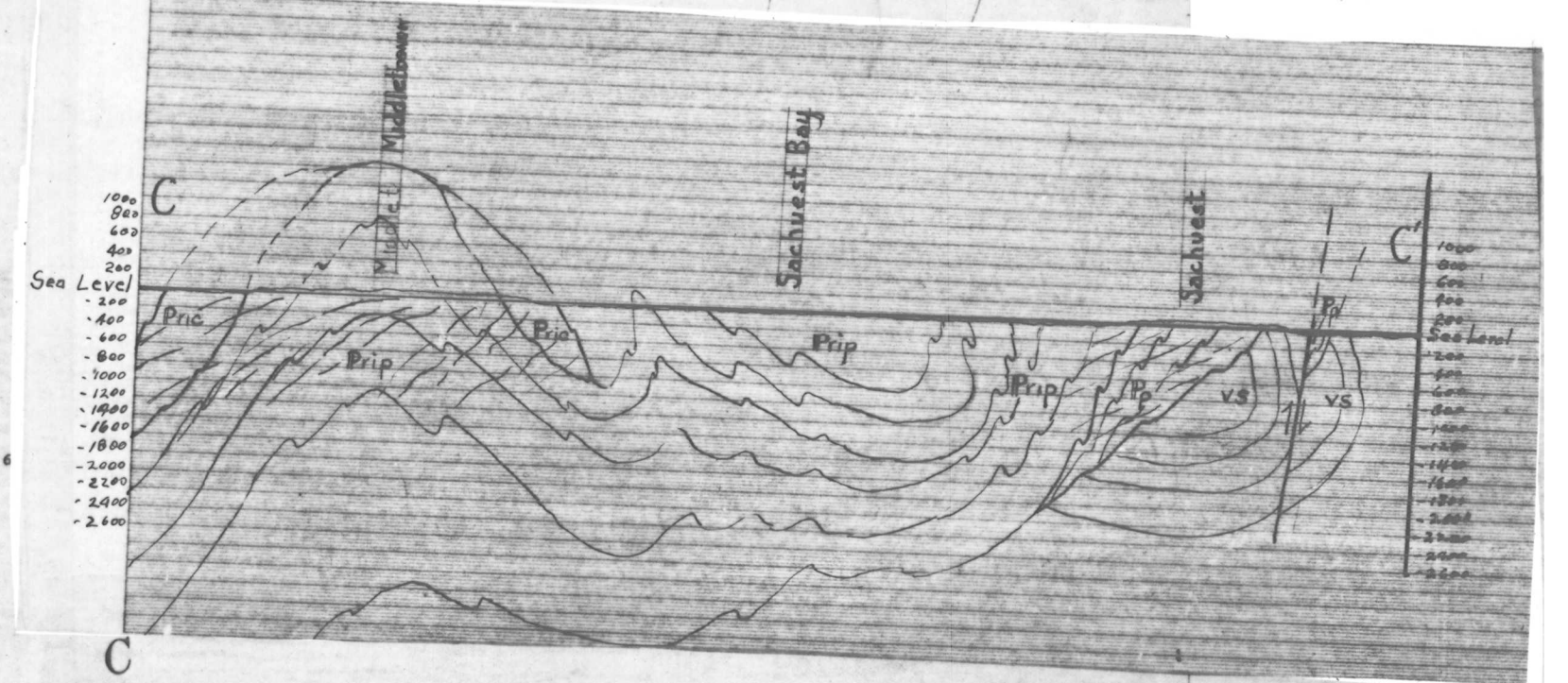


UNITED STATES
DEPARTMENT OF THE INTERIOR
GEOLOGICAL SURVEY

NEWPORT QUADRANGLE
RHODE ISLAND - NEWPORT CO.
7.5 MINUTE SERIES (TOPOGRAPHIC)



▲ Fault & shocklines
└ Fault
○ Mass - like mass
□ - Formed locality
○ Quarry
○ Mine

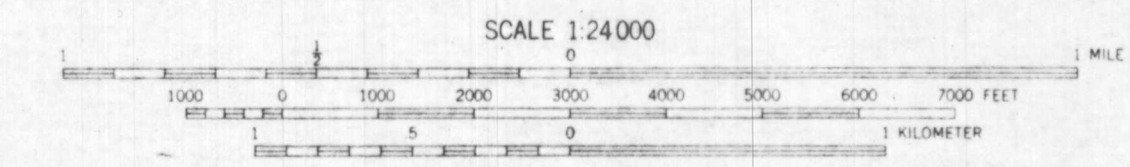


521332735-1

Mapped, edited, and published by the Geological Survey
Control by USC&GS and USCE
Topography by planetable surveys 1939. Revised 1957
Hydrography compiled from USC&GS charts 236 and 1210 (1957)
Polyconic projection. 1927 North American datum
10,000-foot grid based on Rhode Island coordinate system,
zone 19, shown in blue
1000-meter Universal Transverse Mercator grid ticks,
zone 19, shown in blue
Red tint indicates areas in which only
landmark buildings are shown

*the above information applies
to the topographic base map*

APPROXIMATE MEAN
DECLINATION, 1957



CONTOUR INTERVAL 10 FEET
DATUM IS MEAN SEA LEVEL
DEPTH CURVES AND SOUNDINGS IN FEET—DATUM IS MEAN LOW WATER
SHORELINE SHOWN REPRESENTS THE APPROXIMATE LINE OF MEAN HIGH WATER
THE MEAN RANGE OF TIDE IS APPROXIMATELY 9.4 FEET

ROAD CLASSIFICATION
Heavy duty ——— Light duty ———
Medium-duty ——— Unimproved dirt ———
State Route ———

NEWPORT, R. I.
N41225—W711575
1957

PRELIMINARY BEDROCK GEOLOGIC MAP OF THE NEWPORT QUADRANGLE AND PART
OF THE SAKONNET POINT QUADRANGLE, RHODE ISLAND
BY GEORGE E. MOORE, JR. 1975

U.S. Geological Survey
OPEN FILE MAP 28-562
This map is preliminary and has
not been edited or reviewed for
conformity with Geological Survey
standards or nomenclature.