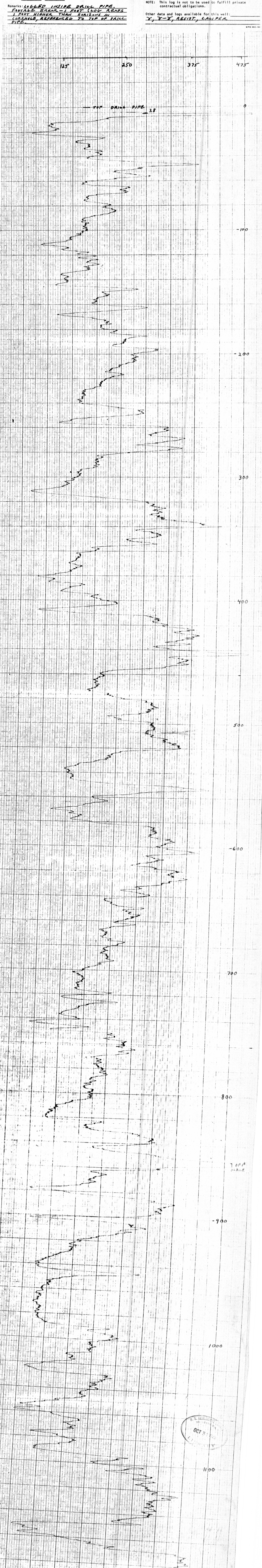


NUCLEAR LOG. U.S. GEOLOGICAL SURVEY, WATER RESOURCES DIVISION
TYPE: NEUTRON-NEUTRON DATE: 9-24-75 District or Project: GEOL. DIV., LEXINGTON, KY
LOCATION: State KY County LESLIE Town NEAR HYDEN FILE LOCATION NO.:
LOGGING INFORMATION WELL INFORMATION
Operator(s) ZEHNER Well No. (USGS): CUTSHIN COREHOLE 1-A
Equipment Address: LEXINGTON, KY Other: 30119 N. RD 118 W
Logger type: WALL RECORD No. Map or Quad: CUTSHIN T.3
Tool type: NEUTRON Site description
Detector type: LIT Agency or Owner: U.S.G.S.
Source type: AM 241-BE Address: LEXINGTON, KY
Source size: 2.0 C. Altitude of L.S.: 1016
Source spacing: 10" Log A.P. TOP DRILL PIPE (0.6' ABOVE G.L.)
Tool length, cable head to detector: 4.9 ft In Bm log interval: 1196.4 Well TD: 1198 ft
Calibration: 125-250 CPS-475 cps Top log interval: 3.8 ft
Logging speed: 10 ft/min Up down Type of finish:
Log vert. scale: 2.0 ft/in Casing: Elev. of top 0.6 ft Below L.S.
MODULE SETTINGS
Scale switch (rate or counts): 0-500 cps chart div (or) I.D. 2.5" from 1198 to 0, type STEEL
API (full scale) I.D. 3.0" from 112 to 0, type STEEL
(circle as applicable)
T. C. switch: 4 sec. Cement: from to type
Position Pot. (Base, zero, or suppression): Dial Div. Perf. interval(s) from to type
Sensitivity Pot. (Span): Dial Div. Open hole diameter: from to
Discrimination Pot.: Dial Div.
Input pulse: 1.0 volts; Polarity
Output switch: normal; reverse Fluid level: 13 ft Above At L.S., Top Csg
Actual scale: 250 cps chart div (or) Below temp °F, °C
API (full scale)
REORDER SETTINGS
Ch 1 Ch 2 Ch 3
Position Pot.:
Sensitivity Pot.:
Run No. of
Remarks: LOGGED INSIDE DRILL PIPE.
FASILE SCALE - FEET LOG READS
1 FOOT HIGHER THAN HORIZONAL
CORRECTION, REFERENCED TO TOP OF DRILL
PIPE.
NOTE: This log is not to be used to fulfill private
contractual obligations.
Other data and logs available for this well:
Y, Y-Z, RESIST, CALIPER



This document has not been edited
or reviewed for conformity with
U. S. Geological Survey standards
or nomenclature.

Kentucky (Southeast) Neophisical, 1975
sheet 2

STATISTICS CHECK
AT 1196.4' open file
0-500 T.C. 4 75-56