

NUCLEAR LOG

U.S. GEOLOGICAL SURVEY, WATER RESOURCES DIVISION

TYPE: GAMMA-GAMMA DATE: 9-24-75 District or Project: GEOL. DIV., LEXINGTON

LOCATION: State KY. County LESLIE Town NEAR HYDEN FILE LOCATION NO.: OF 75-563

LOGGING INFORMATION

Operator(s): ZEHNER

Equipment Address: LOUISVILLE, KY.

Logger type: WELL LOGGERS

Tool type: GAMMA

Detector type: N21

Source size: 60-60

Source spacing: 8"

Tool length, cable head to detector: 4.2 ft

Calibration: 300-625-1250-1875 cps

Logging speed: 2.0 ft/min

Log vert. scale: 2.0 ft/in

MODULE SETTINGS

Scale switch (rate or counts): 0-2.5K cps chart div (or) API full scale (circle as applicable)

T. C. switch: 2 sec.

Position Pot. (Base, zero, or suppression): Dial Div.

Sensitivity Pot. (Span): Dial Div.

Discrimination Pot.: Dial Div.

Input pulse: 1.0 volts; Polarity reverse

Output switch: normal

Actual scale: 250 cps chart div (or) API full scale (circle as applicable)

RECORDER SETTINGS

Position Pot.: Ch 1 Ch 2 Ch 3

Sensitivity Pot.: Ch 1 Ch 2 Ch 3

Run No. 1 of 1

Remarks: LOGGED INSIDE DRILL PIPE
PUTABLE ERROR - 0.8 FT. LOG READS
0.8' HIGHER THAN HORIZONS IN CORNER,
REFERENCE TO TOP OF DRILL PIPE

WELL INFORMATION

Well No. (USGS): CUTSHIN COREHOLE 1-A

Other: 370119 N 832118 W

Map or Quad: CUTSHIN 2.5'

Site description:

Agency or Owner: U.S.G.S.

Address: LEXINGTON, KY.

Altitude of L.S.: 1016

Log N.P.: TOP DRILL PIPE (0.6' ABOVE G.L.)

Log interval: 118.4 ft Well TD: 1198 ft

Top log interval: 3.4

Type of finish: STEEL

Casing: Elev. of top 0.6 ft Above L.S.

I.D. 2.8 from 1158 to 0 type STEEL

I.D. 3.0 from 112 to 0 type STEEL

I.D. 3.0 from 112 to 0 type STEEL

Cement: from 1158 to 0 type STEEL

Perf. interval(s) from 1158 to 0 type STEEL

Open hole diameter: from 112 to 0 type STEEL

Fluid level: 13 ft Above L.S. (Top Csg)

Fluid type: WATER

Fluid resist.: ohm-m

Driller: S.E. ZEHNER & DRILLING

Address: CHARLOTTE, NO. CAROLINA

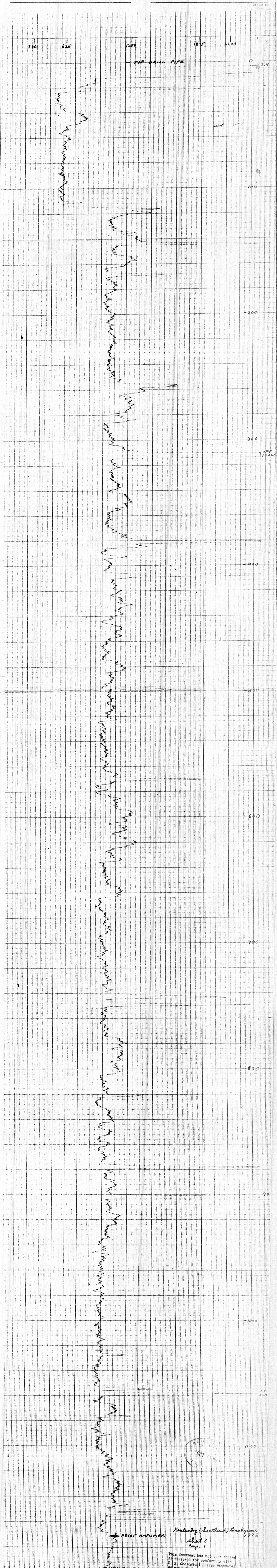
Type of rig: ROTARY

Date started: AUG. 1975 completed SEPT. 1975

Aquifer or formation: BREATHITT

NOTE: This log is not to be used to fulfill private contractual obligations.

Other data and logs available for this well: Y, N-N, RBIST, CALIPER



Kentucky (southeast) Hydrogeological
Sheet 3
of 1

This document has not been edited
or reviewed for conformity with
U. S. Geological Survey standards
or nomenclature.

open file
75-563