

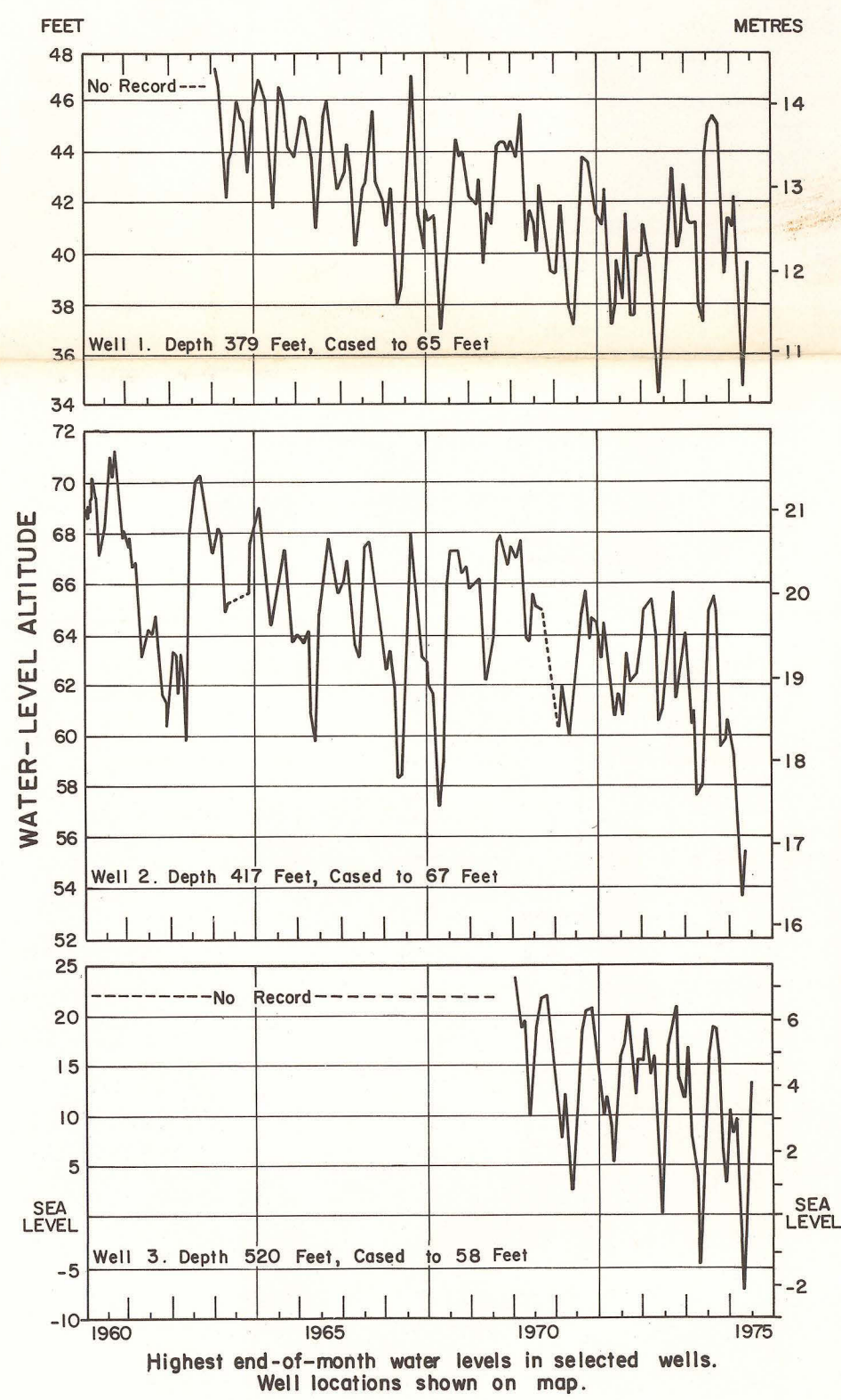
POTENTIOMETRIC SURFACE OF THE FLORIDAN AQUIFER, MAY 1975;
WELL-FIELD PUMPAGE; AND SELECTED HYDROGRAPHS;
HILLSBOROUGH COUNTY, FLORIDA.

By
L. R. Mills, A. D. Duerr, and Anthony Buono
Prepared by
UNITED STATES GEOLOGICAL SURVEY
in cooperation with
HILLSBOROUGH COUNTY, CITY OF TAMPA
and
SOUTHWEST FLORIDA WATER MANAGEMENT DISTRICT
1975

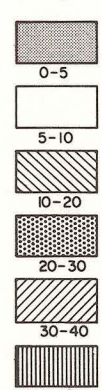
Average daily ground-water pumpage (millions of gallons)
in selected well fields. Well fields shown on map.

Well field	Owner	1970	1971	1972	1973	1974
Eldridge-Wilde ^a	Pinellas Co.	0	2.4	6.1	6.8	6.4
Cosme	St. Petersburg	11.2	12.1	17.9	10.8	8.6
Section 21	St. Petersburg	17.4	17.9	16.0	13.1	8.9
River Oaks	Hillsborough Co.	—	.1	.2	.4	.7
Temple Terrace	Temple Terrace	.9	1.3	1.2	1.4	1.2
Plant City	Plant City	2.2	1.8	2.0	2.0	2.1
Brandon	Hillsborough Co.	1.1	1.6	1.4	3.0	4.7
Riverview	Hillsborough Co.	.4	.5	.9	1.3	1.7
Ruskin	Hillsborough Co.	.1	.1	.1	.2	.2
Sun City Center	Hillsborough Co.	.8	.9	1.0	1.0	1.4

^aIncludes only pumpage from wells in Hillsborough County. Total pumpage from Eldridge-Wilde well field (including Pinellas County wells) was 33.5 million gallons per day in 1974.

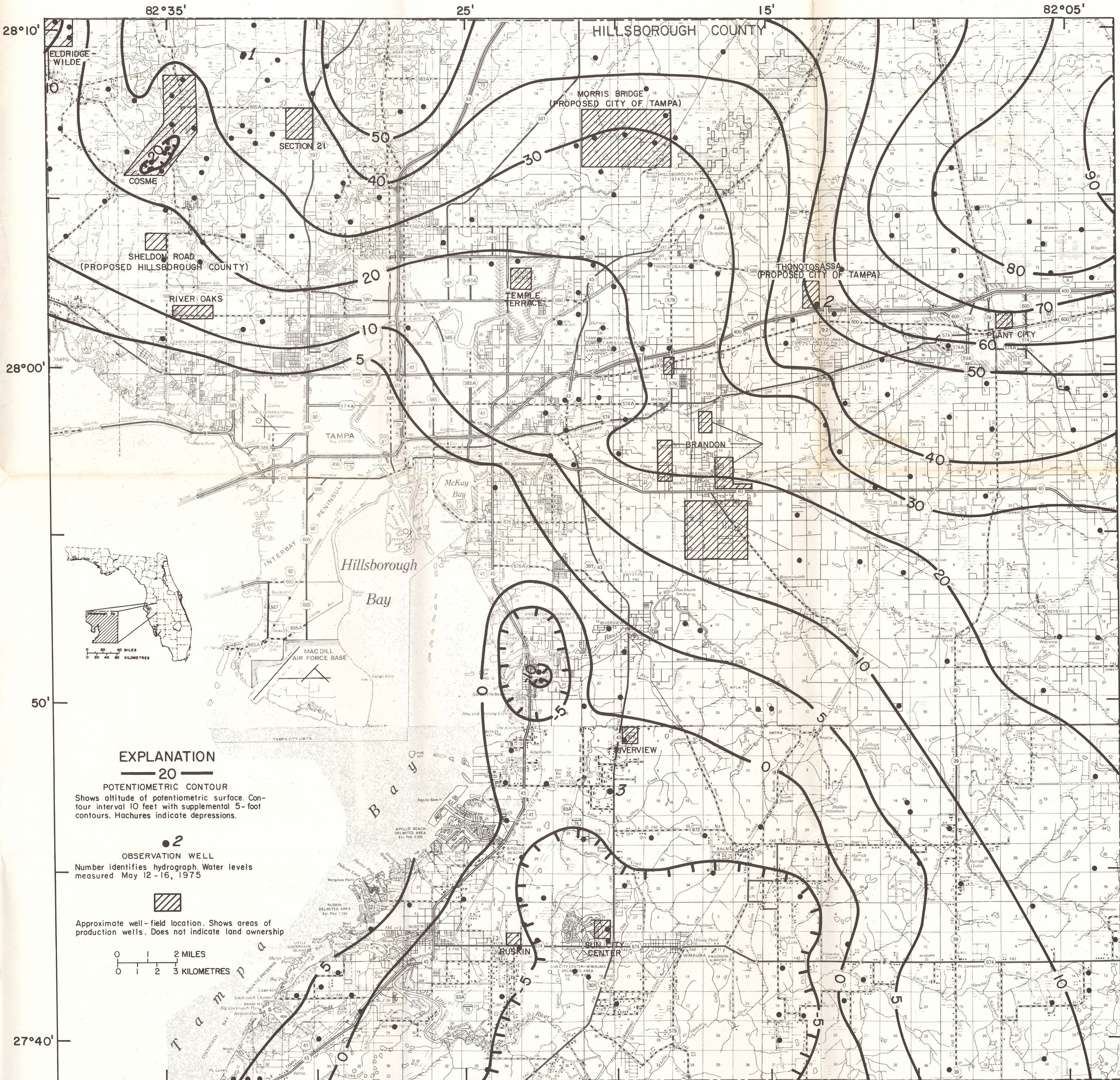


Decline in potentiometric surface
May 1969 to May 1975, in feet



For the convenience of those readers who prefer to use metric units rather than English units, the conversion factors for terms used in this report are listed below:

Multiply English unit	By	To obtain metric unit
feet	.3048	metres
miles	1.609	kilometres
million gallons per day	.0438	cubic metres per second



EXPLANATION

POTENTIOMETRIC CONTOUR

Shows altitude of potentiometric surface. Contour interval 10 feet with supplemental 5-foot contours. Hachures indicate depressions.

OBSERVATION WELL

Number identifies hydrograph. Water levels measured May 12-16, 1975



Approximate well-field location. Shows areas of production wells. Does not indicate land ownership

0 1 2 MILES
0 1 2 3 KILOMETRES

Base from State Road Department county highway map, 1973

Potentiometric surface of the Floridan aquifer, May 1975

POTENTIOMETRIC SURFACE OF THE FLORIDAN AQUIFER, MAY 1975;
WELL-FIELD PUMPAGE; AND SELECTED HYDROGRAPHS;
HILLSBOROUGH COUNTY, FLORIDA.

By
L. R. Mills, A. D. Duerr, and Anthony Buono