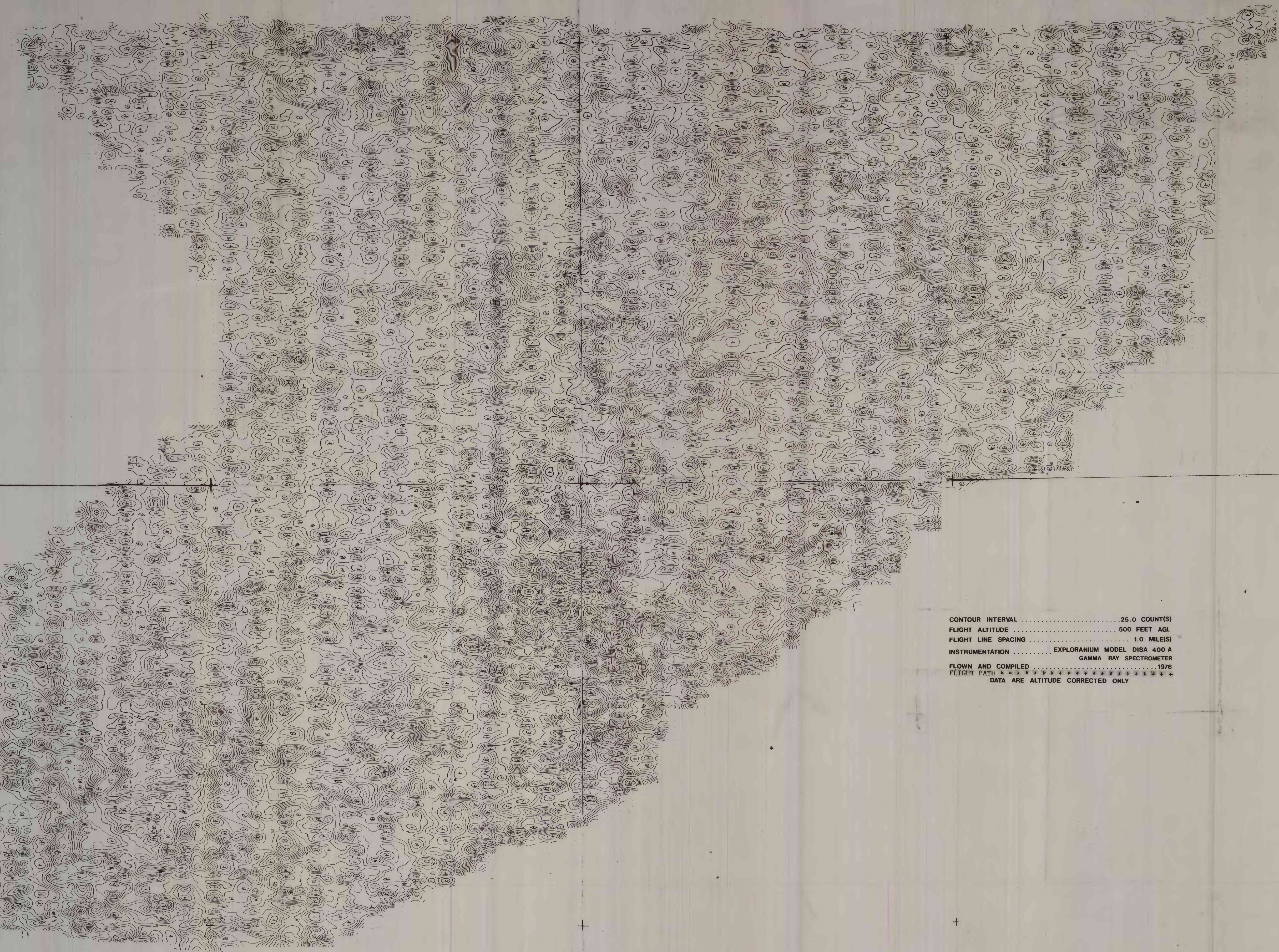


REFERENCES
U.S. Geological Survey, 1975, Aeroradiometric map of Charleston, Charleston and vicinity, South Carolina. U.S. Geol. Survey Open-File Rept. 75-590.

81°00'	80°30'	80°00'	79°30'	79°00'	83°30'
1	2	3	4	5	6
8	9	10	11	12	13
15	16	17	18	19	20
21	22	23	24	25	26
27					
					32°30'

Copies of 27 aeroradiometric maps shown at left, at 1:62,500 scale may be obtained at requester's expense from: South Carolina State Development Board, Division of Geology, Hartison Forest Road, Columbia, South Carolina 29210.

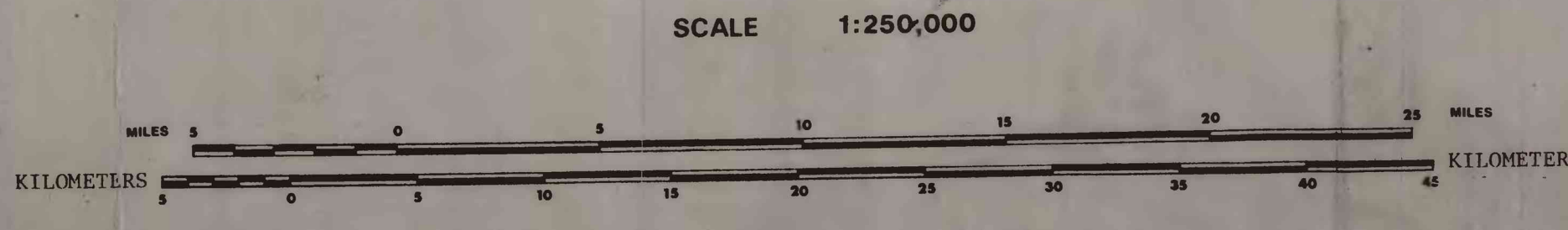
- | | |
|-------------------|---------------------|
| 1. Rowman | 15. Cummings |
| 2. Estowville | 16. Walterboro |
| 3. Citonsa | 17. Cottageville |
| 4. Bonneau | 18. Newnal |
| 5. Trio | 19. Charleston |
| 6. Georgetown | 20. Bull Island |
| 7. Neversly Hills | 21. Shirley |
| 8. St. George | 22. Pineland |
| 9. Ridgeville | 23. Yemassee |
| 10. Summerville | 24. Green Pond |
| 11. Cordesville | 25. Edisto Island |
| 12. Awendaw | 26. Wadmalaw Island |
| 13. Santee | 27. James Island |
| 14. South Island | |



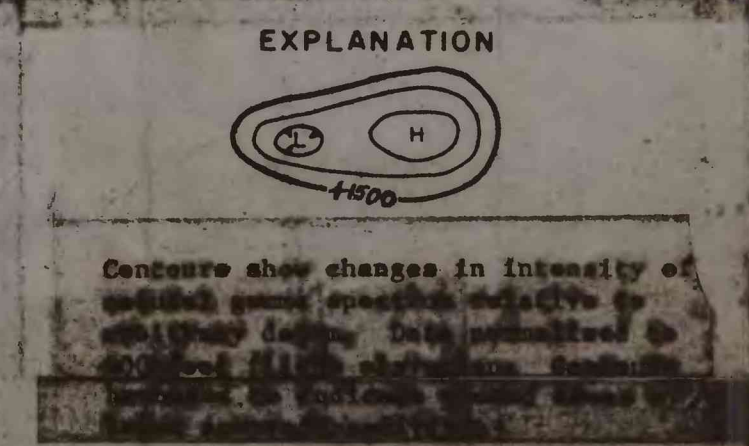
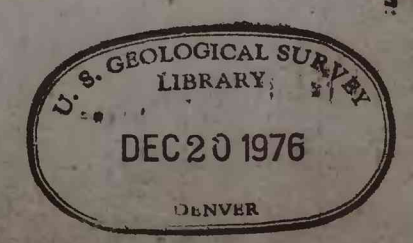
CONTOUR INTERVAL 25.0 COUNTS
FLIGHT ALTITUDE 500 FEET AGL
FLIGHT LINE SPACING 1.0 MILES
INSTRUMENTATION EXPLORANUM MODEL DISA 400 A
GAMMA RAY SPECTROMETER
FLOWN AND COMPLETED 1976
FLIGHT PATH * * * * *

Note: Contours on this map were computer generated. Some detail may have been lost in the process.

This map is preliminary and has not been edited or revised to conform to Geological Survey standards.



AERORADIOACTIVITY MAP OF CHARLESTON AND VICINITY, SOUTH CAROLINA
BY
COASTAL PLAINS REGIONAL COMMISSION AND U.S. GEOLOGICAL SURVEY
1976



PLEASE REPLACE IN POCKET
IN BACK OF BOUND VOLUME