

RECONNAISSANCE PHOTOINTERPRETATION MAP OF LANDSLIDES IN 24 SELECTED 7.5 - MINUTE QUADRANGLES
IN LAKE, NAPA, SOLANO, AND SONOMA COUNTIES, CALIFORNIA

DEPARTMENT OF THE INTERIOR
UNITED STATES GEOLOGICAL SURVEY

1976

U.S. GEOLOGICAL SURVEY
OPEN FILE MAP

BY

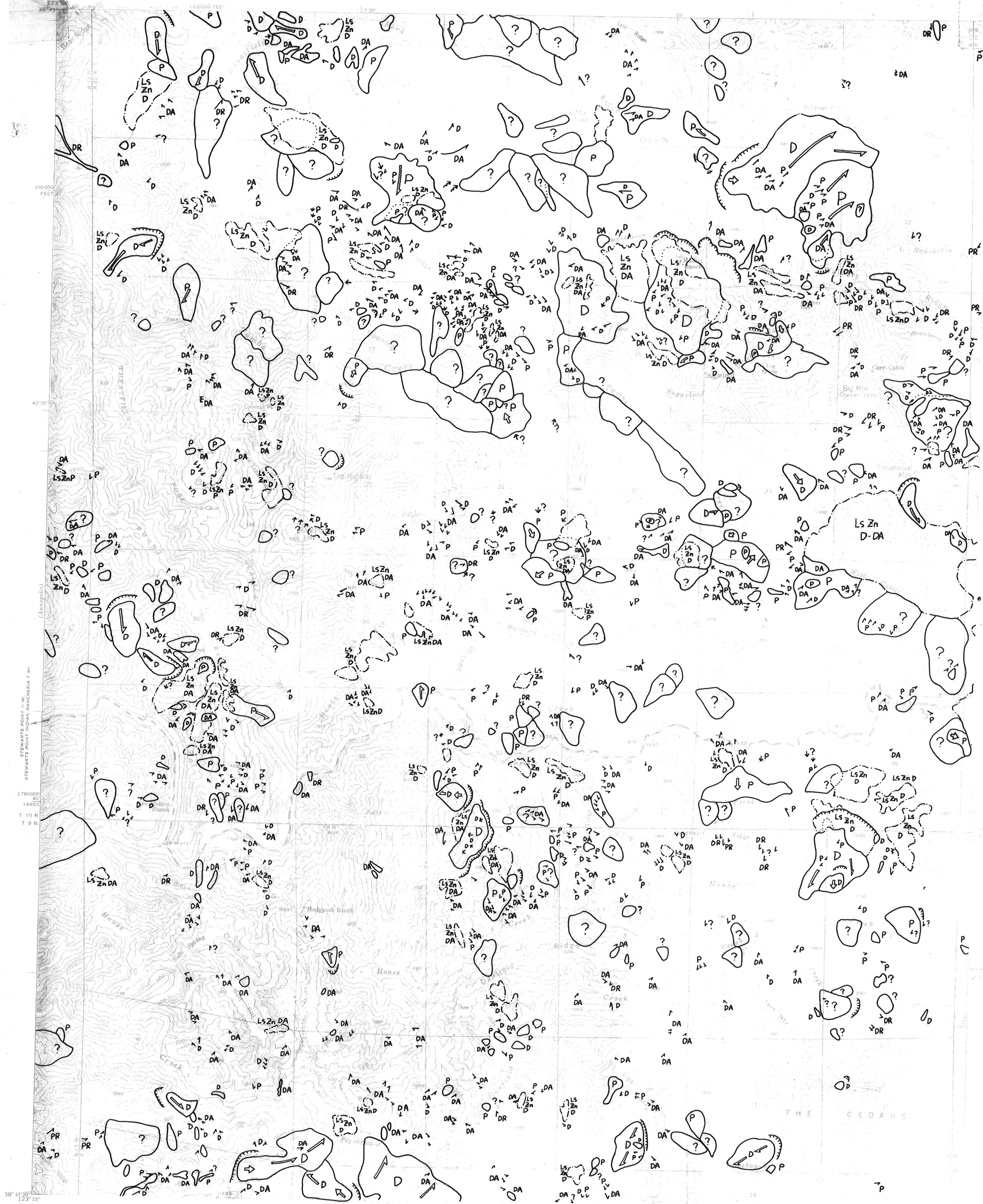
76 - 74 (SHEET 2 OF 25)

M. J. DWYER, N. NOGUCHI AND J. O'ROURKE

(SEE SHEET 1 OF 25 FOR EXPLANATION)

This map is preliminary and has not been reviewed for conformity with U.S. Geological Survey standards and nomenclature.

TOMBS CREEK



38° 37' 30" N
123° 15' 00" W
Mapped by the Geological Survey
1976