

RECONNAISSANCE PHOTOINTERPRETATION MAP OF LANDSLIDES IN 24 SELECTED 7.5 - MINUTE QUADRANGLES

IN LAKE, NAPA, SOLANO, AND SONOMA COUNTIES, CALIFORNIA

DEPARTMENT OF THE INTERIOR
UNITED STATES GEOLOGICAL SURVEY

1976

U.S. GEOLOGICAL SURVEY
OPEN FILE MAP

BY

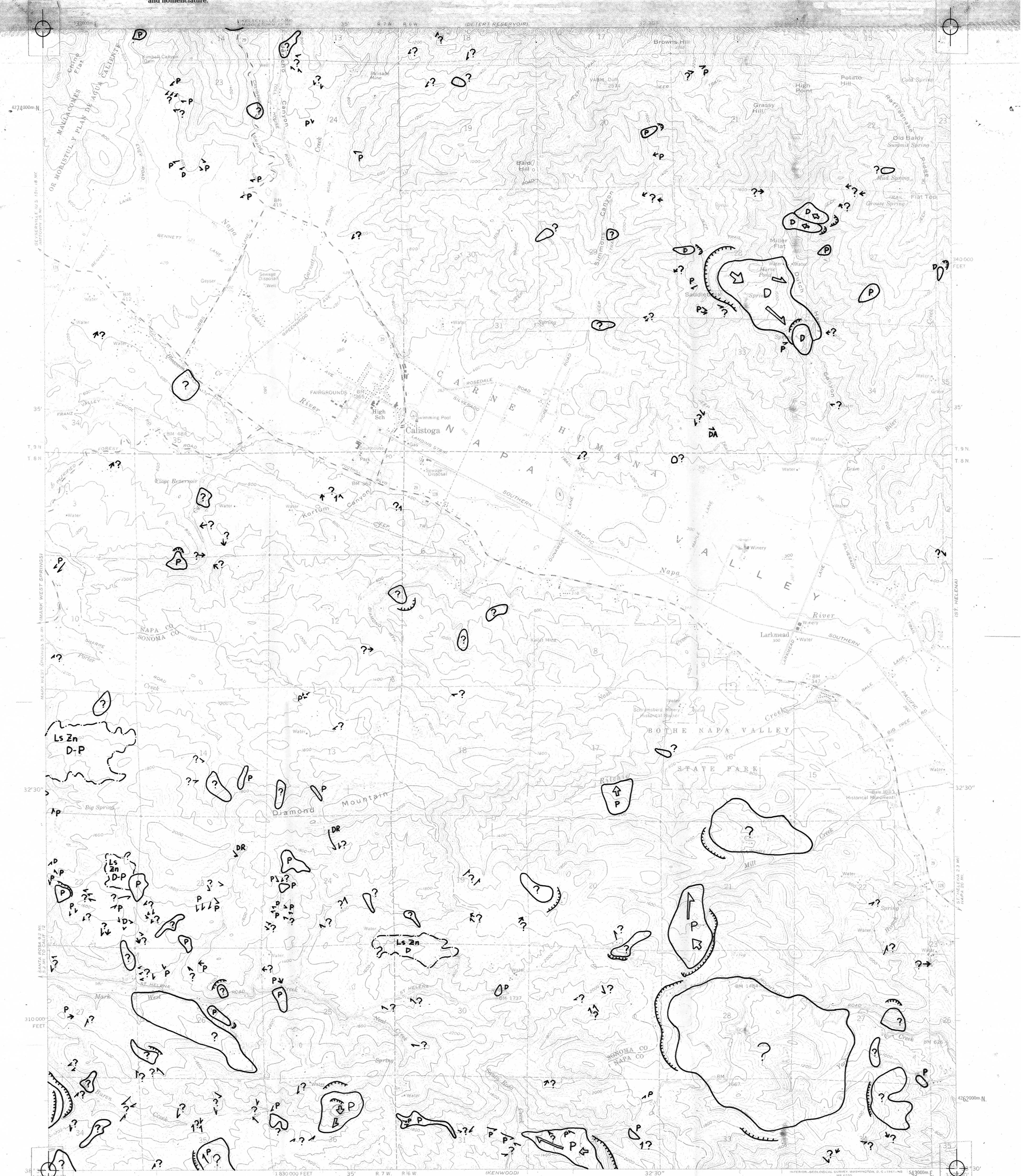
76 - 74 (SHEET 11 OF 25)

M. J. DWYER, N. NOGUCHI AND J. O'ROURKE

(SEE SHEET 1 OF 25 FOR EXPLANATION)

This map is preliminary and has not been reviewed for conformity with U.S. Geological Survey standards and nomenclature.

CALISTOGA



Mapped, edited, and published by the Geological Survey
Control by USGS and USC&GS

Topography from aerial photographs by photogrammetric methods
Aerial photographs taken 1957; Advance field check 1958
Polyconic projection; 1927 North American datum
10,000-foot grid based on California coordinate system, zone 2
1000-meter Universal Transverse Mercator grid ticks,
zone 10, shown in blue
Red tint indicates areas in which only
landmark buildings are shown
Dashed land lines indicate approximate locations

APPROXIMATE MEAN
DECLINATION, 1955

CONTOUR INTERVAL 40 FEET
DOTTED LINES REPRESENT 20 FOOT CONTOURS
DATUM IS MEAN SEA LEVEL

ROAD CLASSIFICATION
Medium-duty ——— Light-duty ———
Unimproved dirt - - - - -
State Route ○



CALISTOGA, CALIF.
8E/4 CALISTOGA 19 QUADRANGLE
N3830-W12230/7.5

THIS MAP COMPLIES WITH NATIONAL MAP ACCURACY STANDARDS
FOR SALE BY U.S. GEOLOGICAL SURVEY, DENVER 25, COLORADO OR WASHINGTON 25, D.C.
A FOLDER DESCRIBING TOPOGRAPHIC MAPS AND SYMBOLS IS AVAILABLE ON REQUEST

1958