

**RECONNAISSANCE PHOTOINTERPRETATION MAP OF LANDSLIDES IN 24 SELECTED 7.5 - MINUTE QUADRANGLES
IN LAKE, NAPA, SOLANO, AND SONOMA COUNTIES, CALIFORNIA**

DEPARTMENT OF THE INTERIOR
UNITED STATES GEOLOGICAL SURVEY

1976

U.S. GEOLOGICAL SURVEY
OPEN FILE MAP

BY

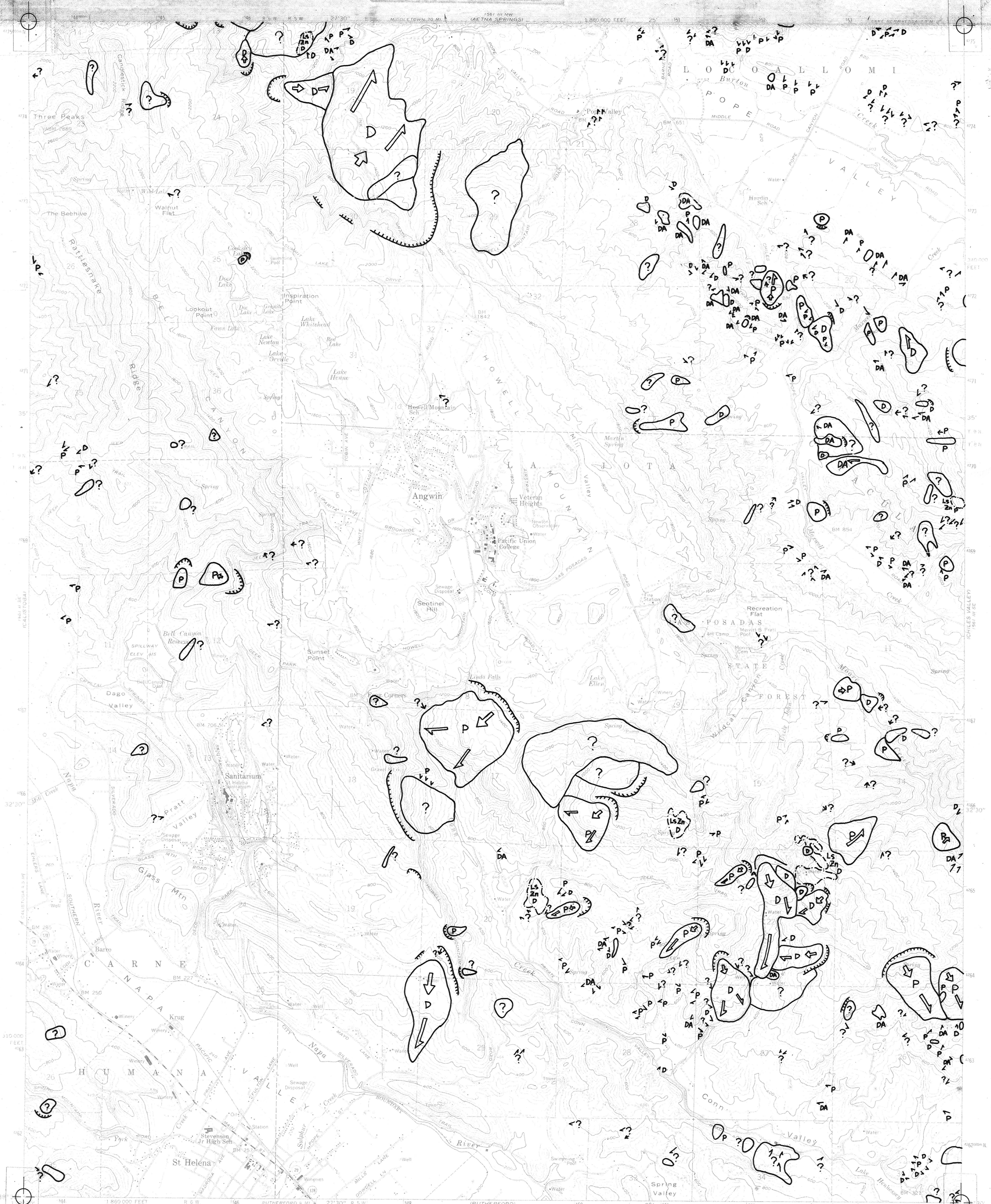
76 - 74 (SHEET 12 OF 25)

M. J. DWYER, N. NOGUCHI AND J. O'ROURKE

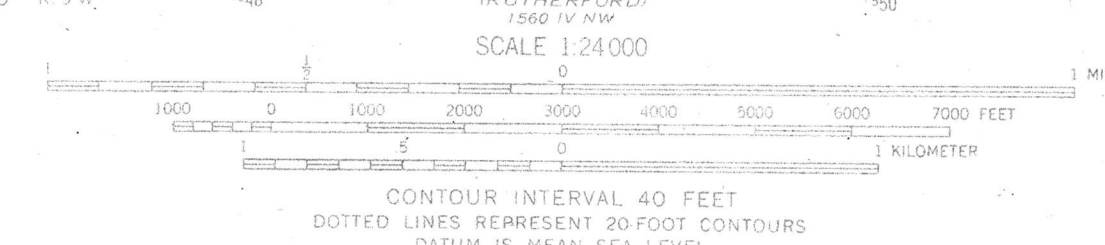
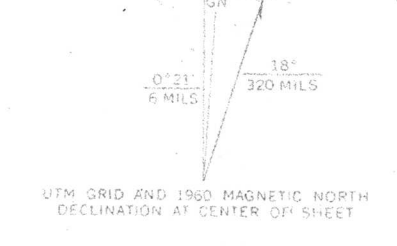
(SEE SHEET 1 OF 25 FOR EXPLANATION)

This map is preliminary and has not been reviewed for conformity with U.S. Geological Survey standards and nomenclature.

ST HELENA



Revised, edited, and published by the Geological Survey
in cooperation with USGS and USC&GS
Topography from aerial photographs by photogrammetric methods
Aerial photographs taken 1957 Field check 1960
Polyconic projection 1927 North American datum
10,000-foot grid based on California coordinate system, zone 2
1000-meter Universal Transverse Mercator grid ticks,
zone 10, shown in blue
Red tint indicates areas in which only
landmark buildings are shown
Dashed lines indicate approximate locations



ROAD CLASSIFICATION

Medium duty	Light duty
Unimproved dirt	State Route

THIS MAP COMPLIES WITH NATIONAL MAP ACCURACY STANDARDS
FOR SALE BY U.S. GEOLOGICAL SURVEY, DENVER, COLORADO 80225, OR WASHINGTON, D.C. 20242
A FOLDER DESCRIBING TOPOGRAPHIC MAPS AND SYMBOLS IS AVAILABLE ON REQUEST

ST. HELENA, CALIF.
SW-4 ST. HELENA 15 QUADRANGLE
N3830 - W12222.5/7.5

1960
AMS 1561 III SW - SERIES V885

SPECIAL PRINTING
Contours and woodland symbols omitted