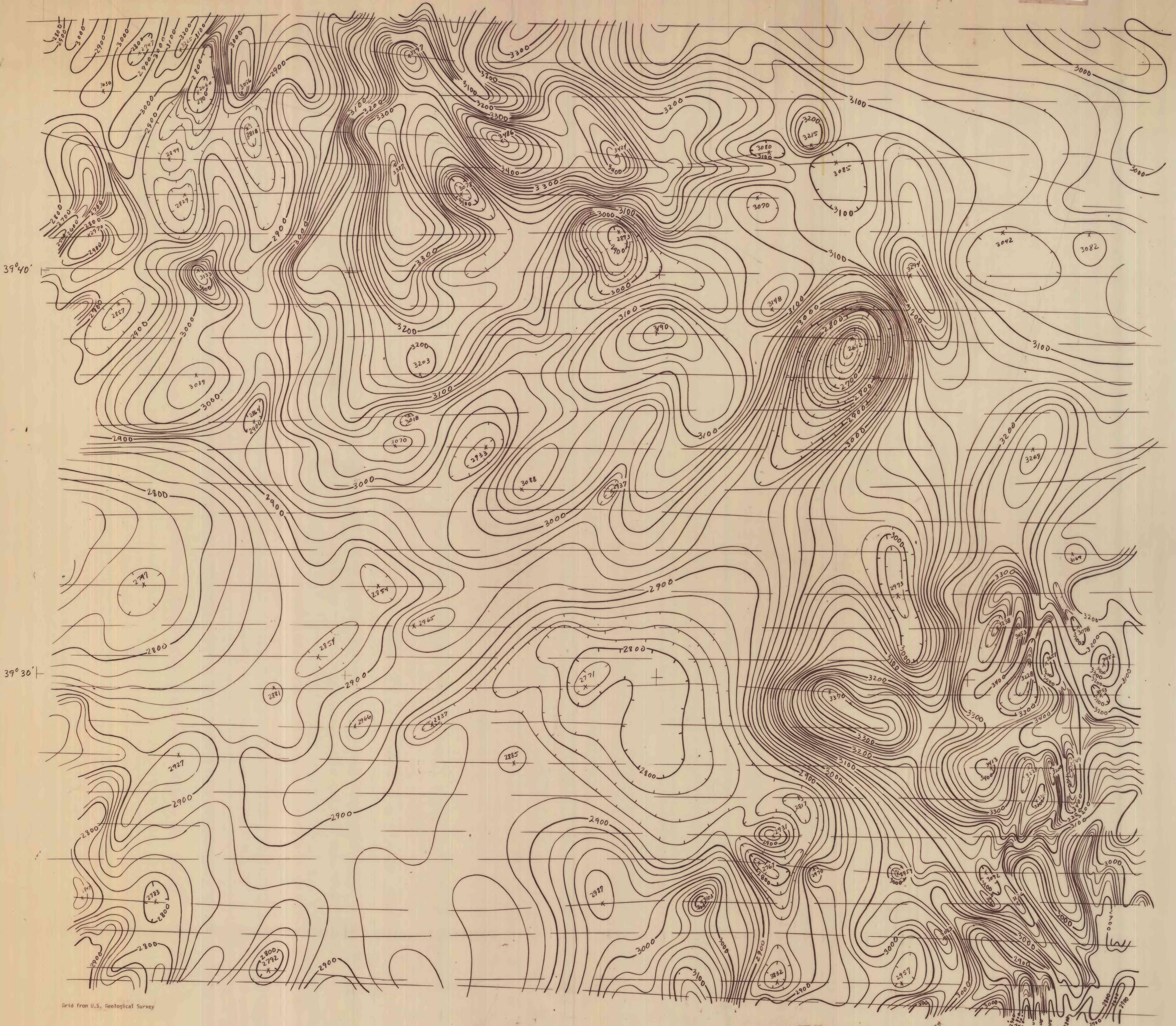


39°50' 119°00' 118°50' 118°40' 118°30'

118°20' 118°10'

DEPARTMENT OF THE INTERIOR  
UNITED STATES GEOLOGICAL SURVEY

OPEN FILE REPORT NO. 70-80  
PLATE 2



Grid from U.S. Geological Survey

Aeromagnetic survey flown and compiled by the  
U.S. Geological Survey, flown at 6,000 feet  
barometric elevation, 1975.

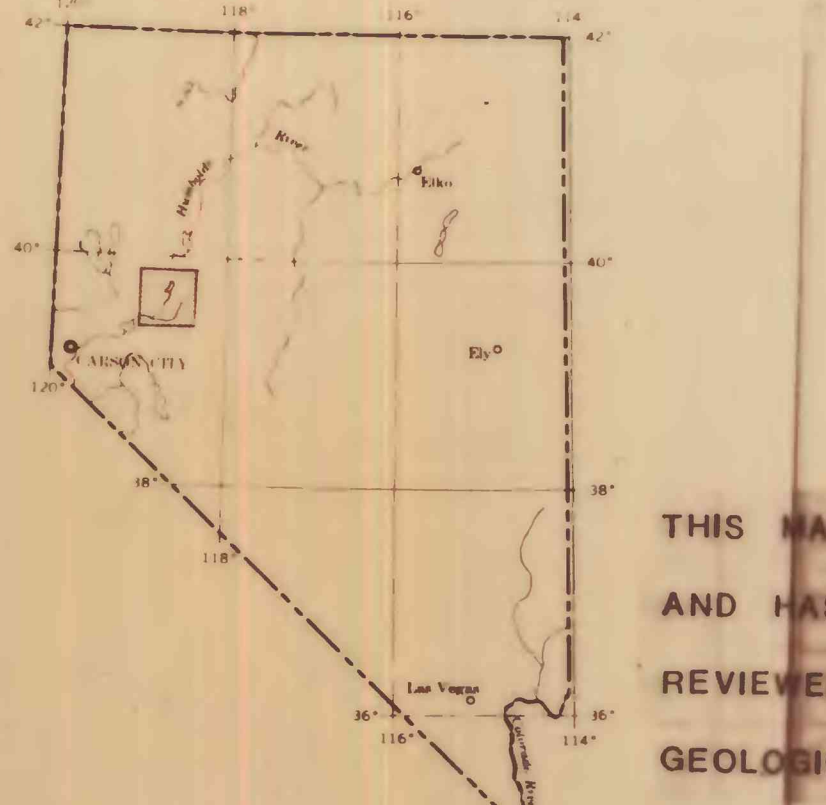
39°20' 119°00'

118°50'

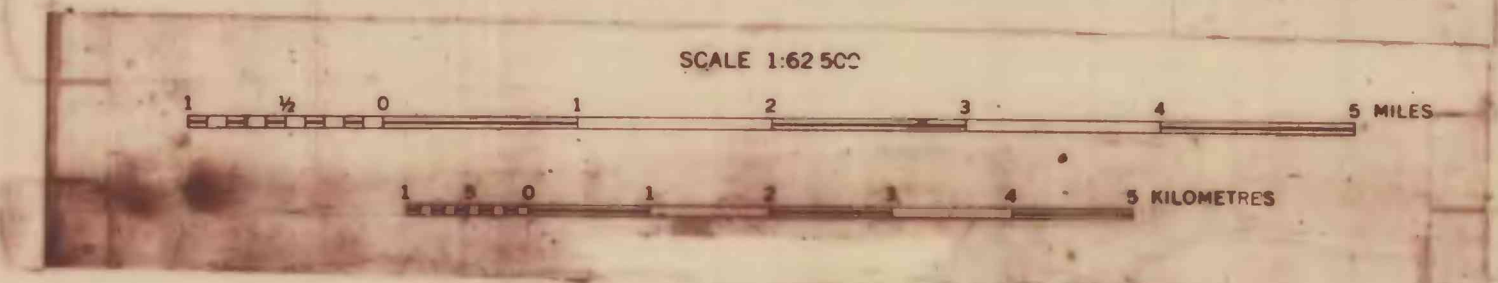
118°40'

118°30'

118°20' 118°10'



THIS MAP IS PRELIMINARY  
AND HAS NOT BEEN EDITED OR  
REVIEWED FOR CONFORMITY TO  
GEOLOGICAL SURVEY STANDARDS



EXPLANATION

Magnetic contours  
Showing total intensity magnetic field  
of the earth in gammas relative to  
arbitrary datum. Measured to indicate  
closed areas of lower magnetic intensity.  
Dashed where data are incomplete.  
Contour interval 20 and 100 gammas.

Location of measured maximum or minimum  
intensity within closed high or closed  
low

Flight path  
Showing location and spacing of data

PLATE 2--AEROMAGNETIC MAP OF STILLWATER-SODA LAKES, NEVADA,  
BY U.S. GEOLOGICAL SURVEY.