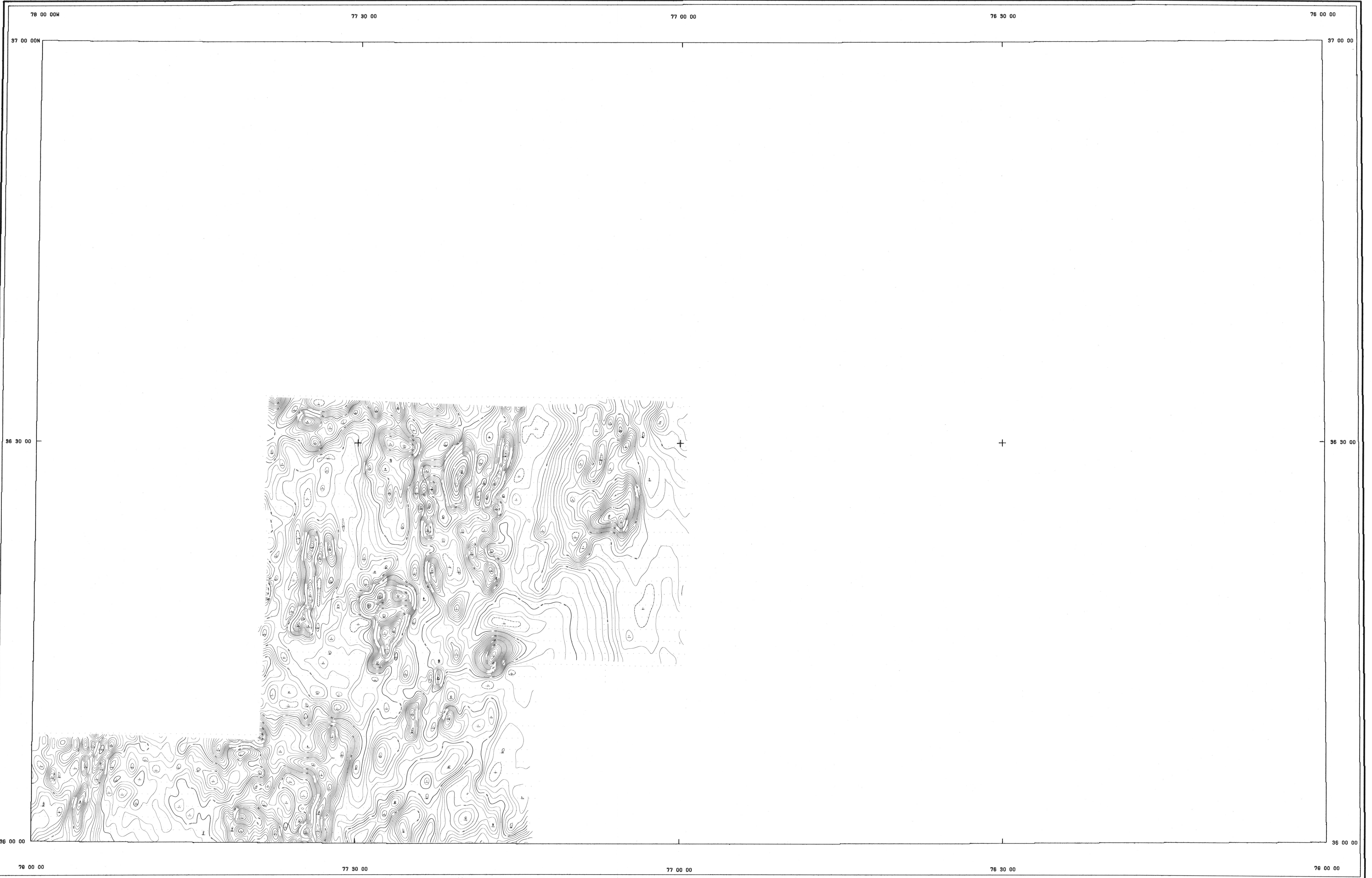


# NORFOLK

PREPARED IN COOPERATION WITH THE GEORGIA  
DEPARTMENT OF NATURAL RESOURCES, THE SOUTH  
CAROLINA STATE DEVELOPMENT BOARD, AND THE  
NORTH CAROLINA DEPARTMENT OF NATURAL AND ECONOMIC RESOURCES

OPEN FILE REPORT 76-181  
(SHEET 3 OF 13)



CONTOUR INTERVAL ..... 20.0 GAMMAS  
DATUM ..... 55035.34 GAMMAS  
FLIGHT LINE SPACING ..... 1.0 MILE(S)  
FLIGHT ALTITUDE ..... 500 FEET AGL  
FLOWN AND COMPILED ..... 1975  
INSTRUMENT ..... GEOMETRICS G-803 PROTON MAGNETOMETER

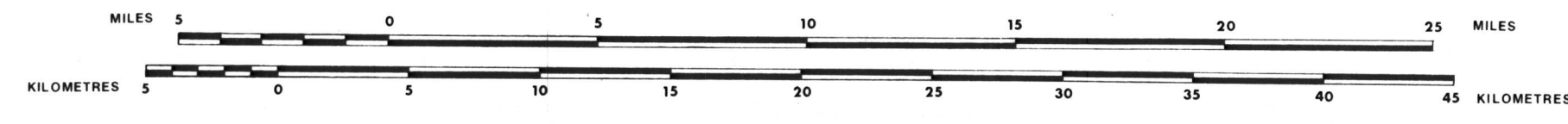
A REGIONAL TREND OF 7.22 GAMMAS/MILE NORTH  
AND -2.15 GAMMAS/MILE EAST EXISTED AND WAS  
REMOVED USING THE 1965 IGRF UPDATED TO 1975

..... FLIGHT PATH SHOWING LOCATION AND  
SPACING OF DATA

U.S. Geological Survey  
OPEN FILE REPORT  
This report is preliminary and has not  
been edited for conformity with  
Geological Survey standards or  
nomenclature.



SCALE 1:250,000



NOTE: CONTOURS ON THIS MAP WERE COMPUTER  
GENERATED. SOME DETAIL MAY HAVE BEEN LOST IN  
THE PROCESS.

**RESIDUAL MAGNETIC INTENSITY**

**AREA 1**

**AEROMAGNETIC MAPS OF PARTS OF GEORGIA, SOUTH CAROLINA, AND NORTH CAROLINA**

By  
THE COASTAL PLAINS REGIONAL COMMISSION AND THE U.S. GEOLOGICAL SURVEY  
1976

**NORTHEASTERN NORTH CAROLINA**