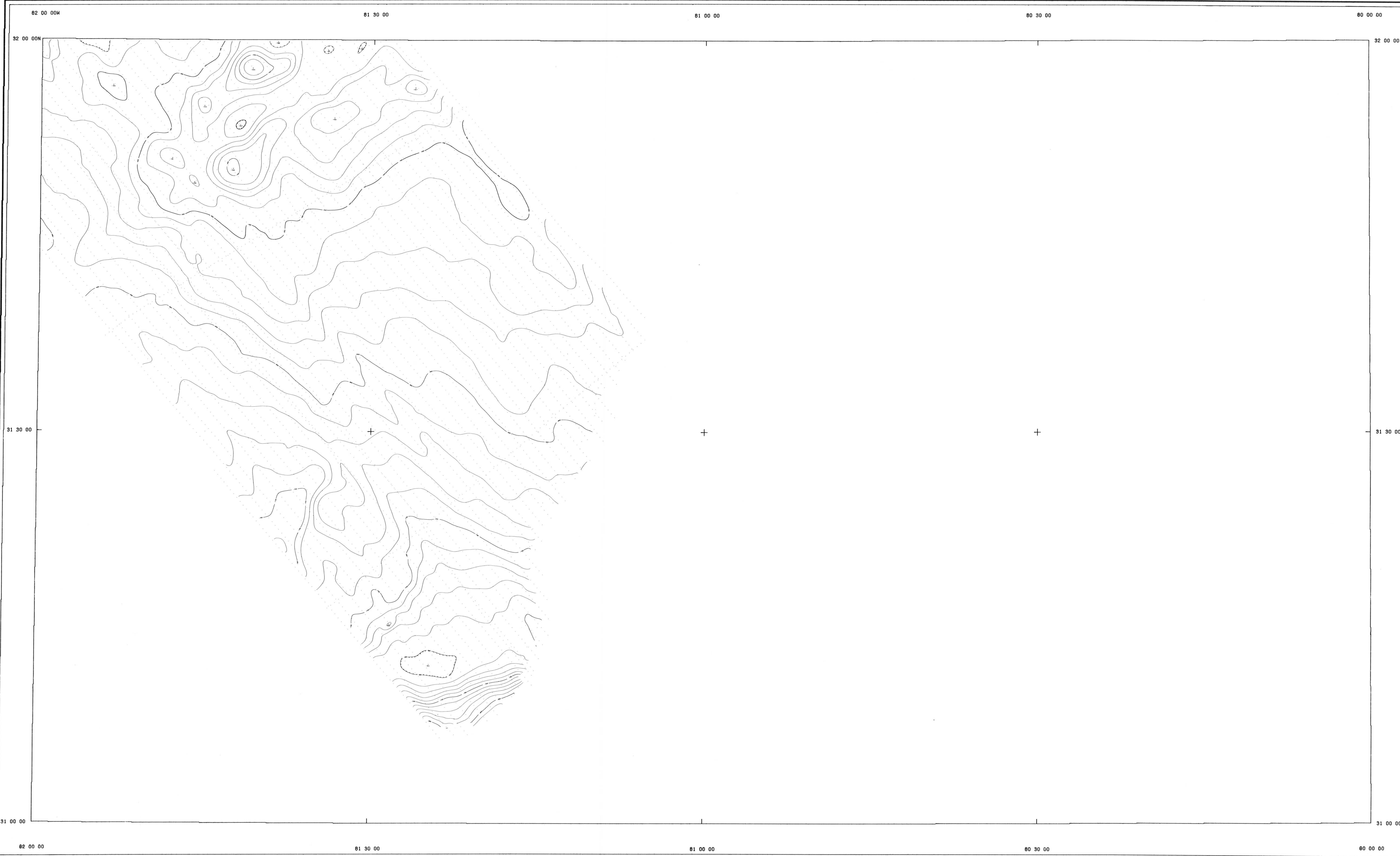


BRUNSWICK

PREPARED IN COOPERATION WITH THE GEORGIA
DEPARTMENT OF NATURAL RESOURCES, THE SOUTH
CAROLINA STATE DEVELOPMENT BOARD, AND THE
NORTH CAROLINA DEPARTMENT OF NATURAL AND ECONOMIC RESOURCES

OPEN FILE REPORT 76-181
(SHEET 12 OF 13)

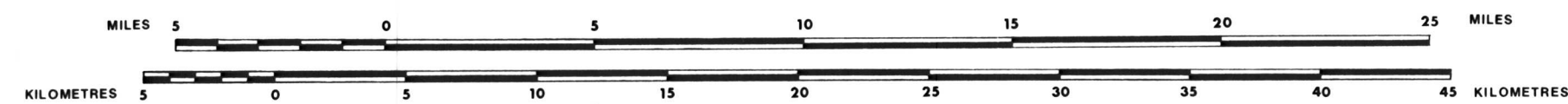


CONTOUR INTERVAL 20.0 GAMMAS
DATUM 52,563.82 GAMMAS
FLIGHT LINE SPACING 1.0 MILE(S)
FLIGHT ALTITUDE 500 FEET AGL
FLOWN AND COMPILED 1974-1975
INSTRUMENT GEOMETRICS G-803 PROTON MAGNETOMETER



U.S. Geological Survey
OPEN FILE REPORT
This report is preliminary and has not
been edited for conformity with
Geological Survey standards or
nomenclature.

SCALE 1:250,000



NOTE: CONTOURS ON THIS MAP WERE COMPUTER
GENERATED. SOME DETAIL MAY HAVE BEEN LOST IN
THE PROCESS.

RESIDUAL MAGNETIC INTENSITY

AREA 3

AEROMAGNETIC MAPS OF PARTS OF GEORGIA, SOUTH CAROLINA, AND NORTH CAROLINA

By

THE COASTAL PLAINS REGIONAL COMMISSION AND THE U.S. GEOLOGICAL SURVEY

EASTERN GEORGIA

1976

A REGIONAL TREND OF 8.72 GAMMAS/MILE NORTH
AND 0.47 GAMMAS/MILE EAST EXISTED AND WAS
REMOVED USING THE 1965 IGRF UPDATED TO 1975

..... FLIGHT PATH SHOWING LOCATION AND
SPACING OF DATA