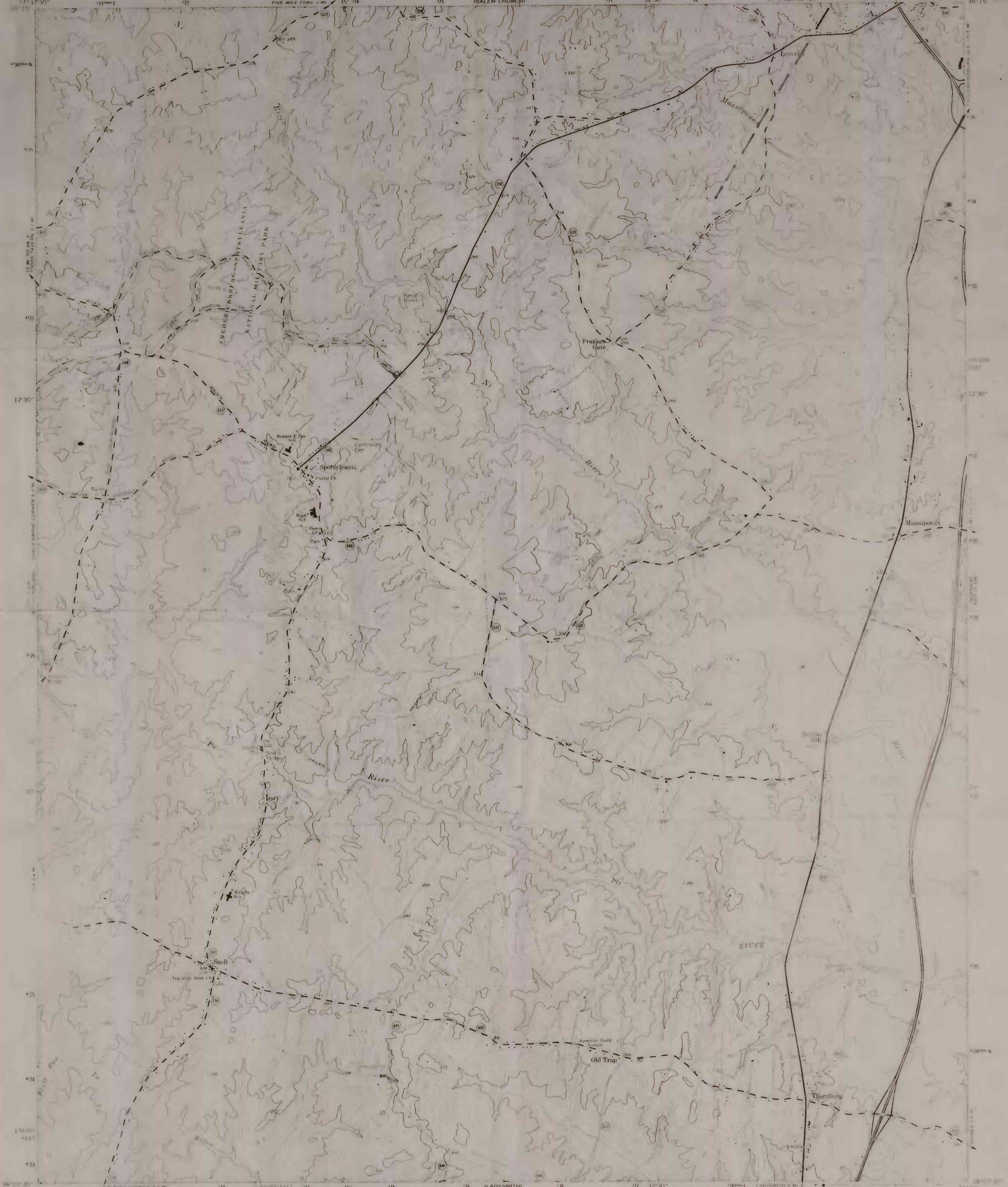


# Plate IV Map showing probable extension of Hazel Run structure toward Spotsylvania, Virginia

UNITED STATES  
DEPARTMENT OF THE INTERIOR  
GEOLOGICAL SURVEY

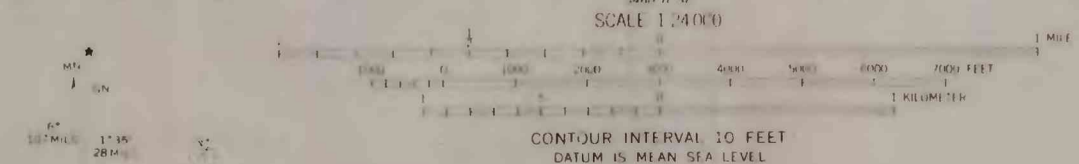
COMMONWEALTH OF VIRGINIA  
DIVISION OF MINERAL RESOURCES  
JAMES L. CALVER, STATE GEOLOGIST

SPOTSYLVANIA QUADRANGLE  
VIRGINIA - SPOTSYLVANIA CO.  
7.5 MINUTE SERIES (TOPOGRAPHIC)



Mapped, edited, and published by the Geological Survey

Compiled by this agency  
Elevation by photogrammetric methods from aerial photographs taken 1954. Elevation contours 1960. Superimposed Army Map Service map dated 1942.  
Projection: 132° North American datum; 50,000-foot grid based on Virginia coordinate system, north zone; 100,000-meter Universal Transverse Mercator grid ticks; 200:19, shown in blue.  
Flow line dashed lines indicate selected fence and field lines where generally visible on aerial photographs; information is unverified.



SCALE 1:24,000  
CONTOUR INTERVAL 10 FEET  
DATUM IS MEAN SEA LEVEL

ROAD CLASSIFICATION	
Heavy duty	Light duty
Medium duty	Unimproved dirt
Interstate Route	U.S. Route
	State Route

THIS MAP COMPLIES WITH NATIONAL MAP ACCURACY STANDARDS  
FOR SALE BY U.S. GEOLOGICAL SURVEY, WASHINGTON, D.C. 20242  
AND VIRGINIA DIVISION OF MINERAL RESOURCES, CHARLOTTESVILLE, VIRGINIA 22903  
A FOLDER DESCRIBING TOPOGRAPHIC MAPS AND SYMBOLS IS AVAILABLE ON REQUEST

SPOTSYLVANIA, VA.