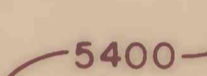
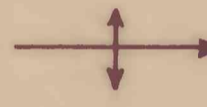

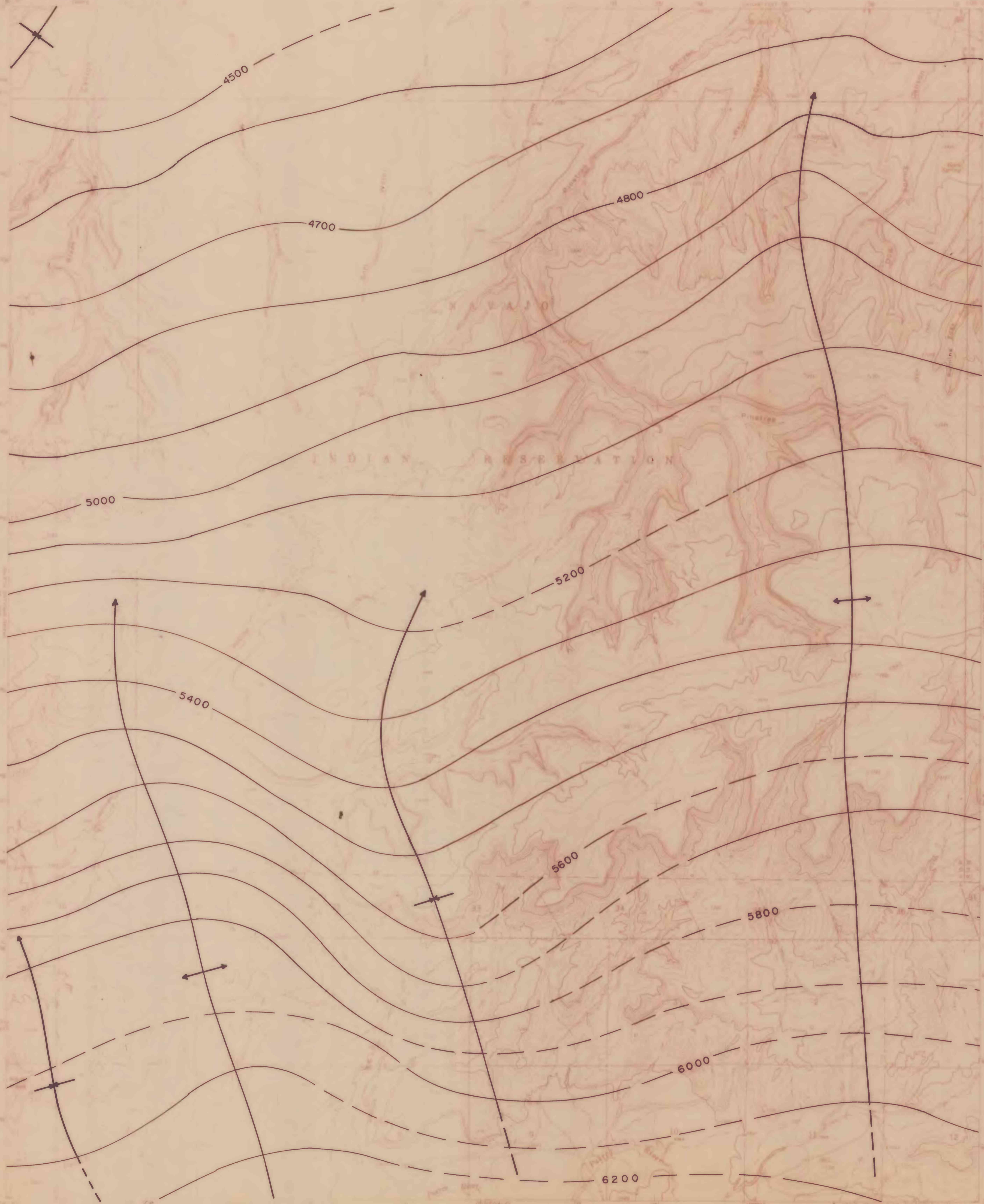


11	7	7	8
9	14	2	4
6	12	3	6
12	7	1	3
7	6	1	3

Drill Hole Density Diagram of the Oak Spring quadrangle:  
The number in each block represents the number of  
electric logs used for structure contouring within  
the block area. Data from 129 logs from within the  
quadrangle were used in contouring.

EXPLANATION OF MAP SYMBOLS

-  Structure Contours--Drawn on the base of the  
Cretaceous, Dakota Sandstone; dashed where  
approximately located. Contour interval  
100 feet. Numbers represent elevation  
above sea level in feet
-  Axial Trace of anticlinal fold, with direction  
of plunge
-  Axial Trace of synclinal fold, with direction  
of plunge



Base from U.S. Geological Survey, 1963

Compiled in 1976

U.S. Geological Survey  
OPEN FILE REPORT  
This map is preliminary and has not  
been edited or reviewed for conformity  
with Geological Survey standards or  
nomenclature.

PRELIMINARY GEOLOGIC AND STRUCTURE CONTOUR  
MAPS OF THE OAK SPRING QUADRANGLE,  
McKINLEY COUNTY, NEW MEXICO

By

Allan R. Kirk and Robert S. Zech