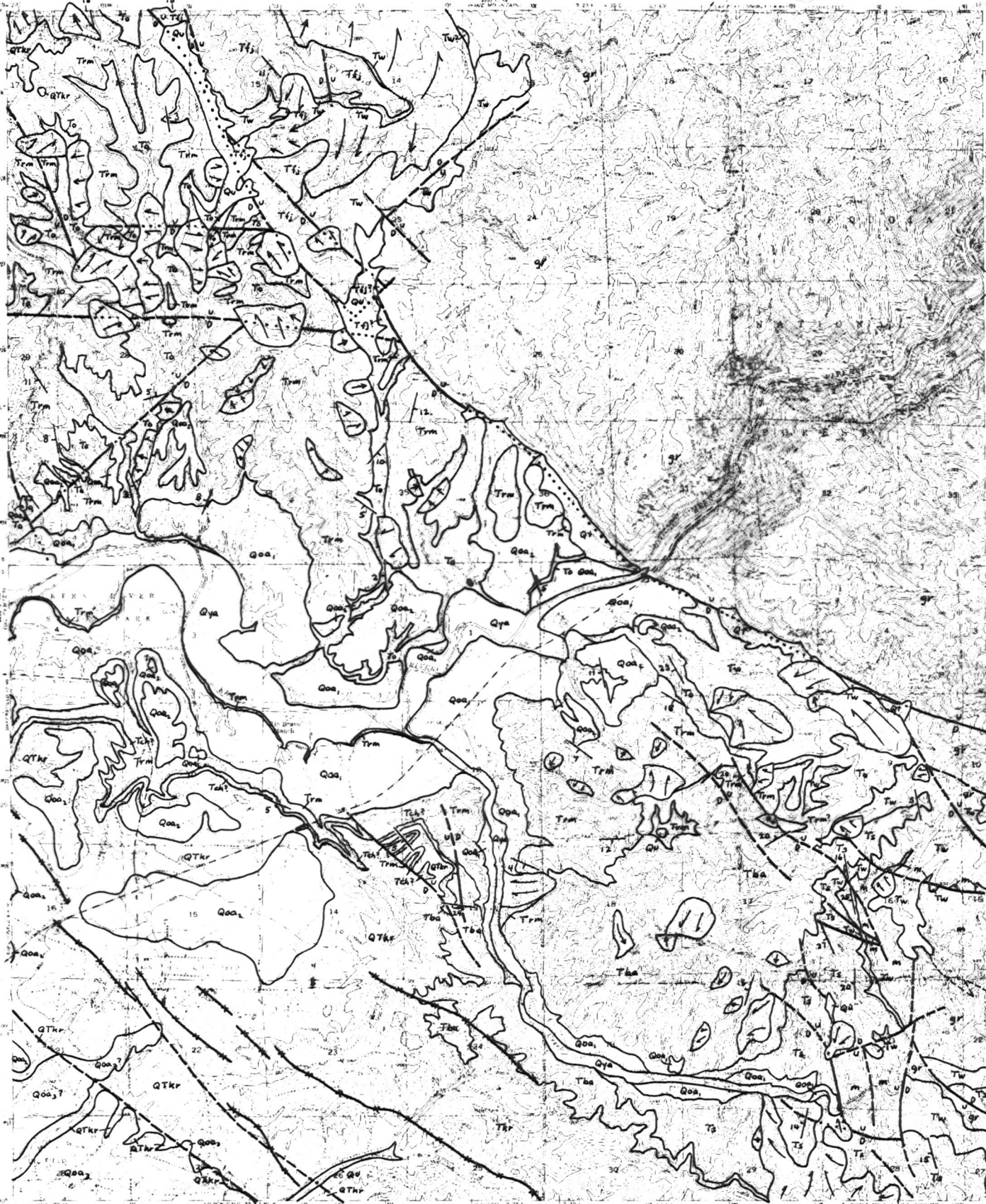


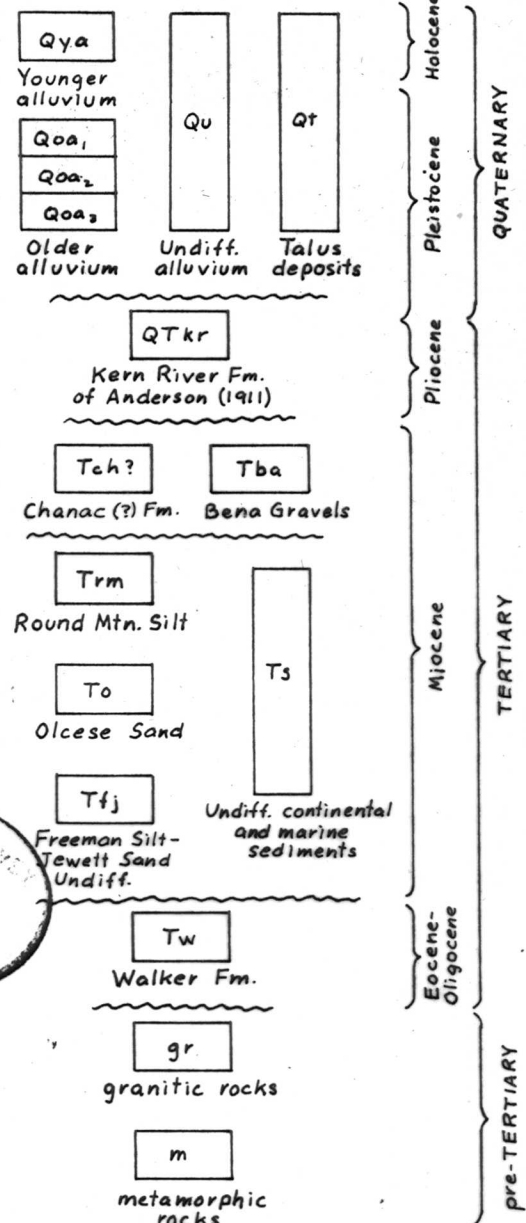
U.S. GEOLOGICAL SURVEY
OPEN-FILE MAP 76-592
SHEET 2 of 4

UNITED STATES
DEPARTMENT OF THE INTERIOR
GEOLOGICAL SURVEY

RIO BRAVO RANCH QUADRANGLE
CALIFORNIA
7.5 MINUTE 15' BY 15' GEOGRAPHIC



SCALE 1:62,500



GEOLOGY OF THE RIO BRAVO RANCH QUADRANGLE
compiled by J. A. Bartow and M. P. Doukas, 1976

This map is preliminary and has not been reviewed for conformity with U.S. Geological Survey standards and nomenclature.

SOURCES:

- Addicott, W. O., field work, 1953-54*
Bruer, Robinson, and others, unpub.
Cole and others, 1945. Quaternary geology interpreted by D. E. Marchand (oral comm., 1975).
Dibblee and others, 1965*
Dibblee and Warne, unpub.*
*Modified by field work and aerial photo interpretation, 1975.

REFERENCES:

- Anderson, F. M., 1911, The Neocene deposits of Kern River, California, and the Temblor Basin: Calif. Acad. Sci. Proc., 4th ser., v. 3, no. 3, p. 73-148.
Bruer, W. G., Robinson, B., and others, Earthquake fissures in central and southwestern Kern County, unpub. map, 1952, in California Division of Mines and Geology, 1976, Special studies zones, Rio Bravo Ranch quadrangle, scale 1:24,000.
Cole, R. C., and others, 1945, Soil survey of the Bakersfield area: U.S. Dept. of Agriculture, series 1937, no. 12, scale 1:63,360.
Dibblee, T. W., Jr., Bruer, W. G., Hackel, Otto, and Warne, A. H., 1965, Geologic map of the southeastern San Joaquin Valley (Kern River to Grapevine Canyon), Kern County, California, scale 1:63,360, in Pacific Sect. AAPG-SEG-SEPM Guidebook, 1965.
Dibblee, T. W., Jr., and Warne, A. H., unpub., Geologic map of the Edison quadrangle, Kern County, California, scale 1:62,500.