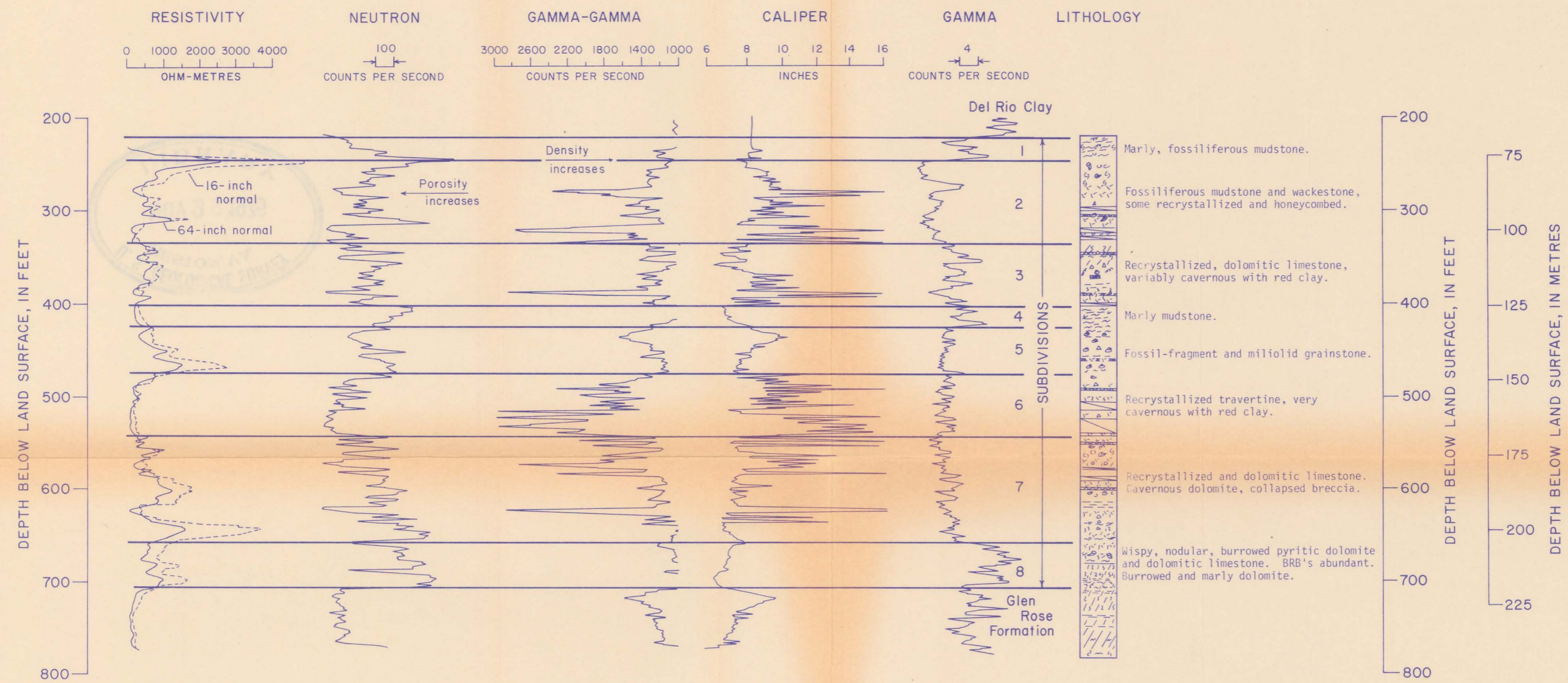


(200)
R290
W.76-627



EXPLANATION

- | | | | | | |
|---|-------------------------|-----|---|-------|---------------------------------------|
| ○ | Miliolid | △ | Chert | --- | Marl, marly or argillaceous limestone |
| ⊖ | Rudistid | XX | Celestite | | Shale |
| ⊕ | Snail | ⌒ | Anhydrite or gypsum (or gypsum molds) | ~ | Wispy, nodular |
| ⊖ | Clam | □ | Pyrite | ∩ | Burrowed |
| ∩ | Mollusc shell fragments | ∨ ∨ | Crystalline or recrystallized limestone | ∩ | Stylolite |
| ∩ | Oyster | | Travertine, cave popcorn or other cave rock | ○ ○ ○ | Breccia |
| ⊞ | Stromatolitic layer | /// | Dolomite or dolomitic limestone | ∩ | Cavern, cavernous |
| | | | | ∩ | Honeycombed |

FIGURE 12.-Geophysical logs of the Selma test hole, AY 68-30-211