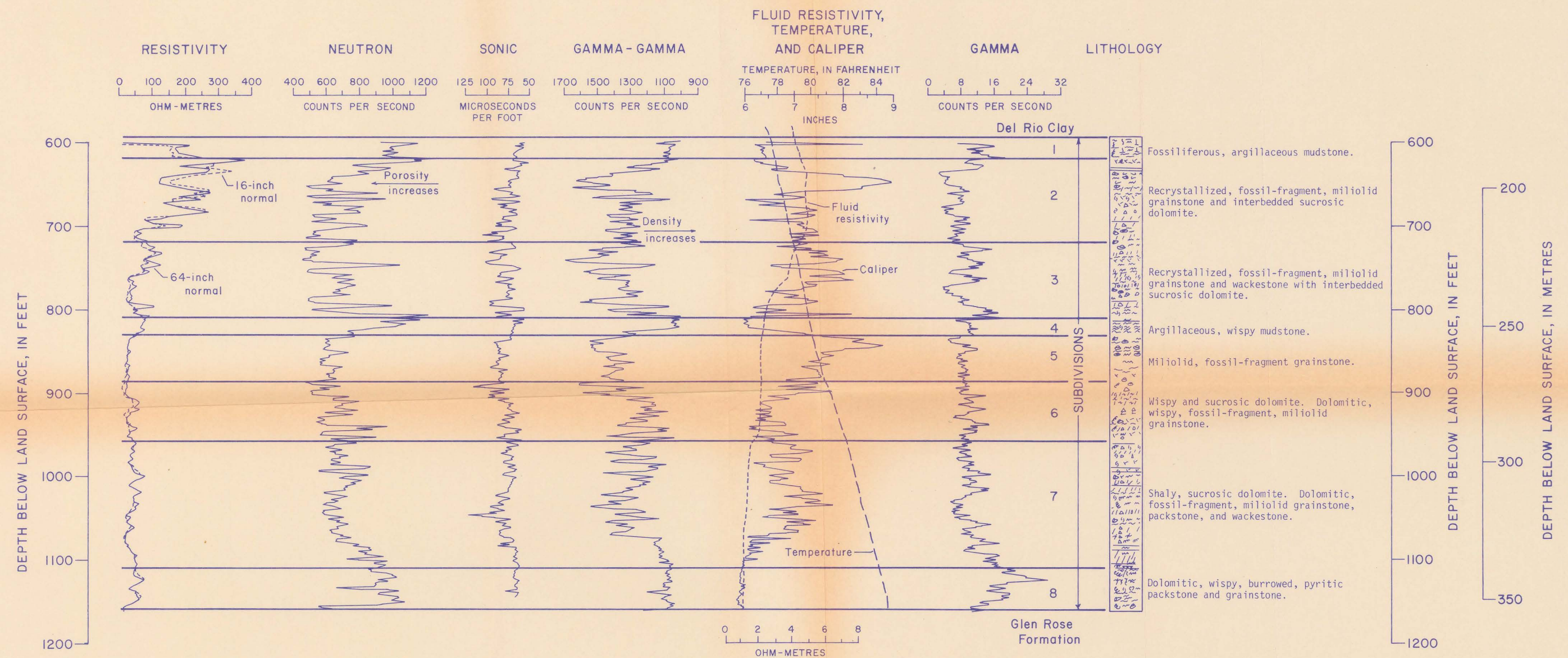


(200)  
R290  
no. 76-627



EXPLANATION

- |                           |   |   |
|---------------------------|---|---|
| ○ Miliolid                | △ Chert   | --- Marl, marly or argillaceous limestone |
| ○ Rudistid                | XX Celestite                                    | — Shale                                   |
| ○ Snail                   | ∩ Anhydrite or gypsum (or gypsum molds)         | ~ Wispy, nodular                          |
| ○ Clam                    | □ Pyrite  | ∩ Burrowed                                |
| ○ Mollusc shell fragments | ∨ Crystalline or recrystallized limestone       | ∩ Stylolite                               |
| ○ Oyster                  | III Travertine, cave popcorn or other cave rock | ○ Breccia                                 |
| III Stromatolitic layer   | /// Dolomite or dolomitic limestone             | ∩ Cavern, cavernous                       |
|                           |   | ∩ Honeycombed                             |

FIGURE 8.-Geophysical logs of the Randolph test hole, AY 68-30-807