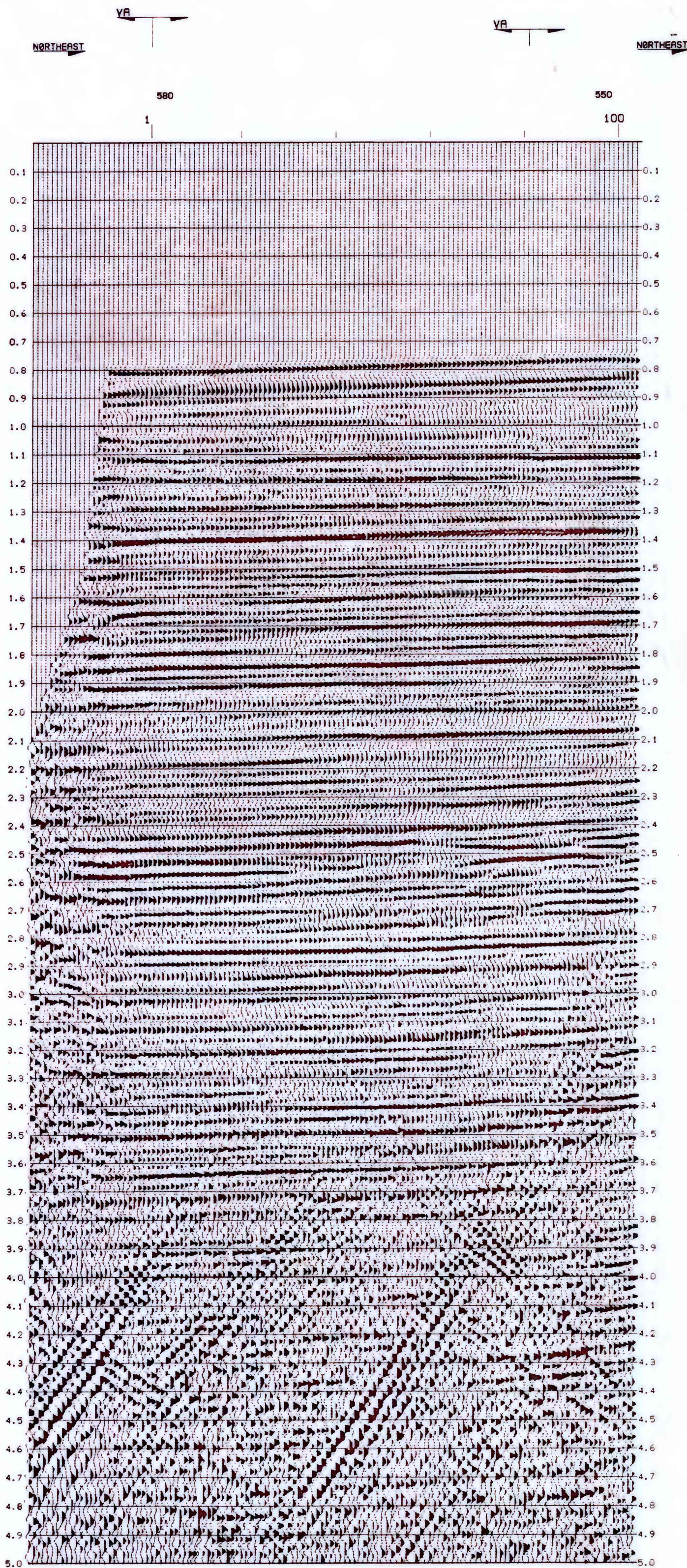


76-658
10/15/20
TAL



LINE DIRECTION

VELOCITY FUNCTION
DIRECTION
LINE INTERSECTION
WATER DEPTHS (METERS)

STATIONS



U.S.G.S.

LINE 1A-NE
SP 1 TO 106
BERING SHELF
24 FOLD STACK

INPUT REEL HEADER INFORMATION

REEL NUMBER
DATE CREATED
NUMBER SAMPLE/TRACE 2500
SAMPLE RATE IN MILLS 2
PROCESSOR DRESSER-OLYMPIC
LINE NUMBER
JOB NUMBER
SECTION NUMBER
PROCESSING STEP

FIELD INFORMATION

ACQUIRED BY U.S.G.S.	VESSEL S.P. LEE
INSTRUMENTS GUS	TYPE GAIN RGR
SWEEP RATE 2 MS	REC LENGTH 6.0 SEC
FILTER 5-100 HZ	NR CHANNELS 48-24 BLANK
SOURCE 0 AIR GUNS	WVD DEPTH 80 FEET
CU IN 1.925	PRESSURE 1900
PWP INTER 80 METERS	CABLE DEPTH 30-80 FEET
GROUP INTER 100 METERS	CABLE LENGTH 2400 METERS
NR. GROUPS 24	DIST TR 24 580 FEET
DIST TR 1 8474 FEET	DATE SEPTEMBER 7, 1970
BENT DIR SW-NE	

PROCESSING SEQUENCE

HOUSTON DATA PROCESSING CENTER

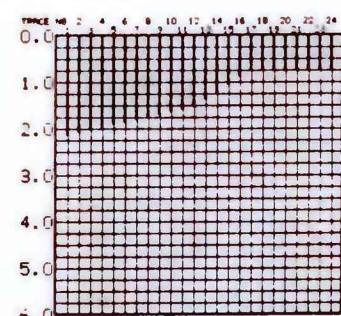
- 1) EDIT + DEMULTIPLEX
- 2) V2T GAIN RECOVERY
- 3) VELOCITY ANALYSIS AT 4 KM INTERVALS
- 4) APPLY NMO
- 5) MUTE
- 6) STACK 24 FOLD
- 7) DECONVOLUTION
AUTO 2ND ZERO CROSSING PRED LENGTH
220MS OPERATOR LENGTH
GATE START 100MS END 3500MS
- 8) SPACE AND TIME VARYING FREQUENCY FILTER
12-36 HZ 0.0-4.0 SEC
10-30 HZ 4.0-5.0 SEC
- 9) DIGITAL AGC 1000MS LENGTH

***** FILMING PARAMETERS *****

PERCENT GAIN 20
HORIZONTAL SCALE 20. TR/IN
VERTICAL SCALE 3. IN/SEC
FILMING DIRECTION L/R
PERCENT BAR 0
POLARITY BLACK+VE

DATA PROCESSED BY
DRESSER OLYMPIC

TRACE SUPPRESSION



TV FILTER APPLICATION

