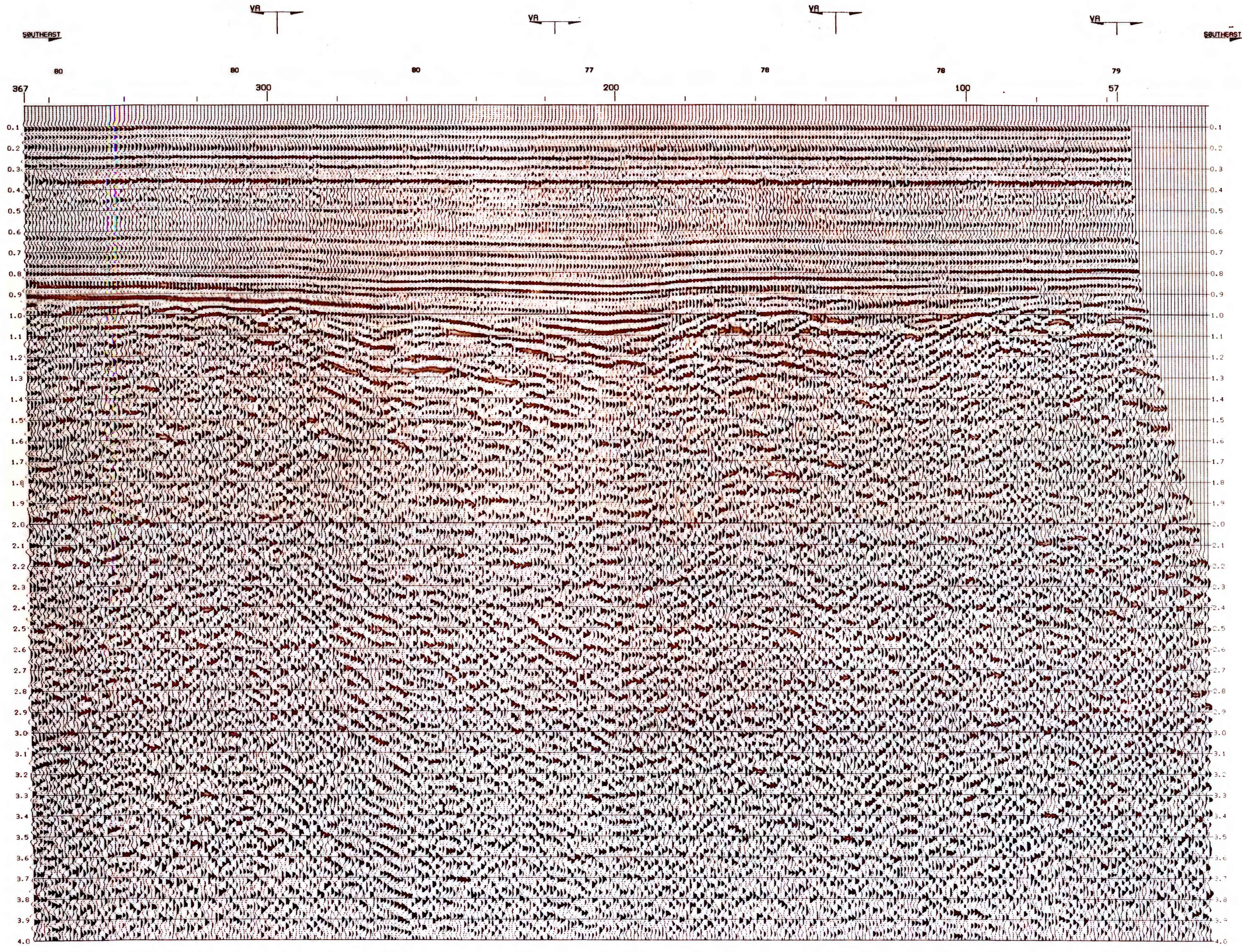


76-652
10 of 15



LINE DIRECTION

VELOCITY FUNCTION

DIRECTION

LINE INTERSECTION

WATER DEPTHS (METERS)

STATIONS



U.S.G.S.

LINE 7A-NW
SP 57 TO 369
BERING SHELF
24 FOLD STACK

INPUT REEL HEADER INFORMATION

REEL NUMBER
DATE CREATED
NUMBER SAMPLE/TRACE 2000
SAMPLE RATE IN MILLS 2
PROCESSOR DRESSER-OLYMPIC
LINE NUMBER
JOB NUMBER
SECTION NUMBER
PROCESSING STEP

FIELD INFORMATION

ACQUIRED BY U.S.G.S.	VESSEL S.P. LEE
INSTRUMENTS GUS	TYPE DRIN R/R
SWP RATE 2 MS	REC LENGTH 4.0 SEC
FILTER 0-100 HZ	NO CHANNELS 48-24 BLANK
SOURCE 8 AIR GUNS	AVE DEPTH 35 FEET
CU IN 1226	PRESSURE 1900
POP INTER 80 METERS	CABLE DEPTH 30-50 FEET
GROUP INTER 100 METERS	CABLE LENGTH 2400 METERS
NO. GROUPS 24	DIST TR 24 930 FEET
DIST TR 1 8474 FEET	DATE SEPTEMBER 16, 1970
DATA DIR SE-NW	

PROCESSING SEQUENCE

HOUSTON DATA PROCESSING CENTER

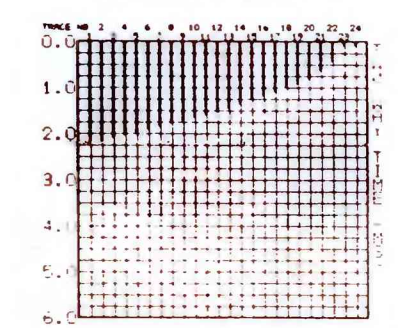
- 1) EDIT + DEMULTIPLEX
- 2) V2T GAIN RECOVERY
- 3) VELOCITY ANALYSIS AT 4 KM INTERVALS
- 4) APPLY NMO
- 5) MUTE
- 6) STACK 24 FOLD
- 7) DECONVOLUTION
AUTO 2ND ZERO CROSSING PRED LENGTH
220MS OPERATOR LENGTH
GATE START 100MS END 350MS
- 8) SPACE AND TIME VARYING FREQUENCY FILTER
12-36 HZ
10-30 HZ
6-24 HZ
- 9) DIGITAL AGC 1000MS LENGTH

***** FILMING PARAMETERS *****

PERCENT GAIN 20
HORIZONTAL SCALE 20. TR/IN
VERTICAL SCALE 3. IN/SEC
FILMING DIRECTION R/L
PERCENT BAR 0
POLARITY BLACK+VE

DATA PROCESSED BY
DRESSER OLYMPIC

TRACE SUPPRESSION



TV FILTER APPLICATION

