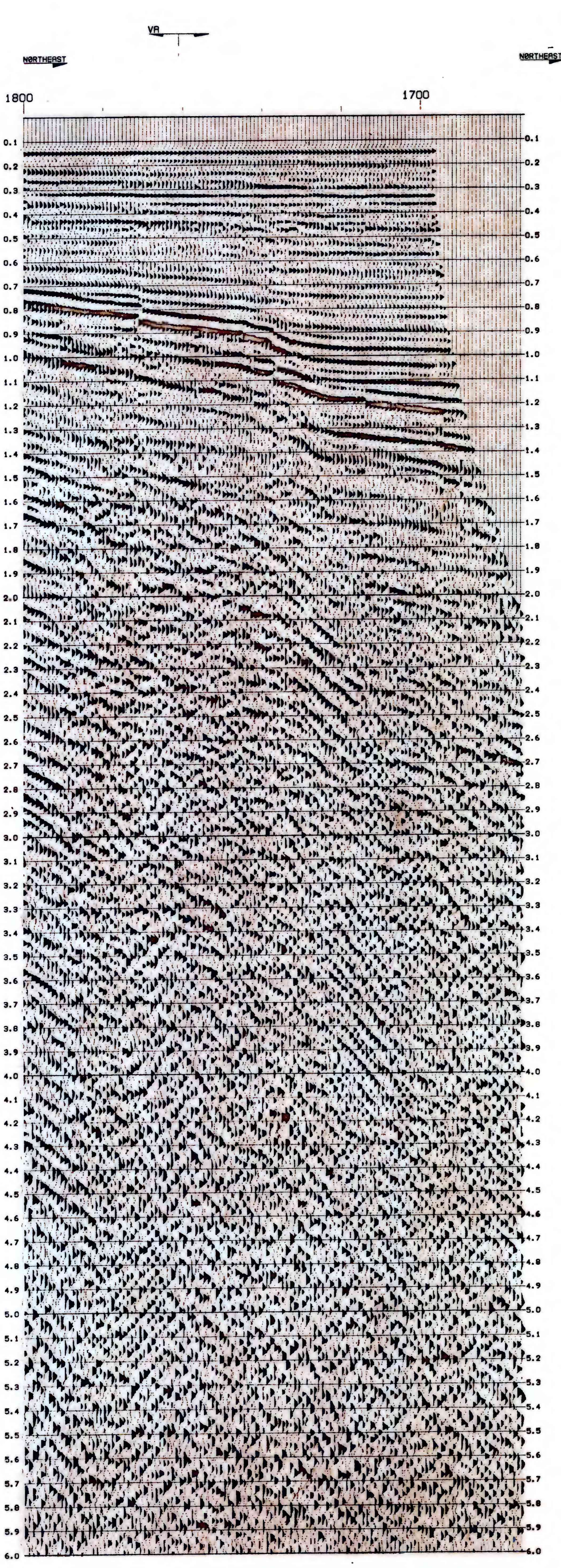


76-652  
138/154/2046  
(198)



LINE DIRECTION

VELOCITY FUNCTION  
DIRECTION  
LINE INTERSECTION

STATIONS



U.S.G.S.

LINE 8B-SW  
SP 1700 TO 1800  
BERING SHELF  
24 FOLD STACK

INPUT REEL HEADER INFORMATION

REEL NUMBER  
DATE CREATED  
NUMBER SAMPLE/TRACE 3000  
SAMPLE RATE IN MILLS 2  
PROCESSOR DRESSER-OLYMPIC  
LINE NUMBER  
JOB NUMBER  
SECTION NUMBER  
PROCESSING STEP

FIELD INFORMATION

ACQUIRED BY U.S.G.S.	VESSEL	S.P. LEE
INSTRUMENTS GUS	TYPE GAIN	AGR
SAMP RATE 2 MS	REC LENGTH	6.0 SEC
FILTER 5-100 HZ	NO CHANNELS	48-24 BLANK
SOURCE 5 AIR GUNS	AVG DEPTH	35 FEET
CU IN 1326	PRESSURE	1900
PDP INTER 50 METERS		
GROUP INTER 100 METERS	CABLE DEPTH	30-50 FEET
NO. GROUPS 24	CABLE LENGTH	2400 METERS
DIST TR 1 8474 FEET	DIST TR 24	930 FEET
BOAT DIR NE-SW	DATE	SEPTEMBER 17, 1975

PROCESSING SEQUENCE

HOUSTON DATA PROCESSING CENTER

- 1) EDIT & DEMULTIPLY
- 2) V2T GAIN RECOVERY
- 3) VELOCITY ANALYSIS AT 4 KM INTERVALS
- 4) DECONVOLUTION
- 5) APPLY NMO
- 6) MUTE
- 7) STACK 24 FOLD
- 8) DECONVOLUTION  
AUTO 2ND ZERO CROSSING PRED LENGTH  
200MS OPERATOR LENGTH  
GATE START 100MS END 3500MS
- 9) TIME VARYING FILTER

\*\*\*\*\* FILMING PARAMETERS \*\*\*\*\*

PERCENT GAIN 100  
HORIZONTAL SCALE 20. TR/IN  
VERTICAL SCALE 3. IN/SEC  
FILMING DIRECTION R/L  
PERCENT BAR 0  
POLARITY BLACK+VE

\*\*\*\*\*  
DATA PROCESSED BY  
DRESSER OLYMPIC  
\*\*\*\*\*