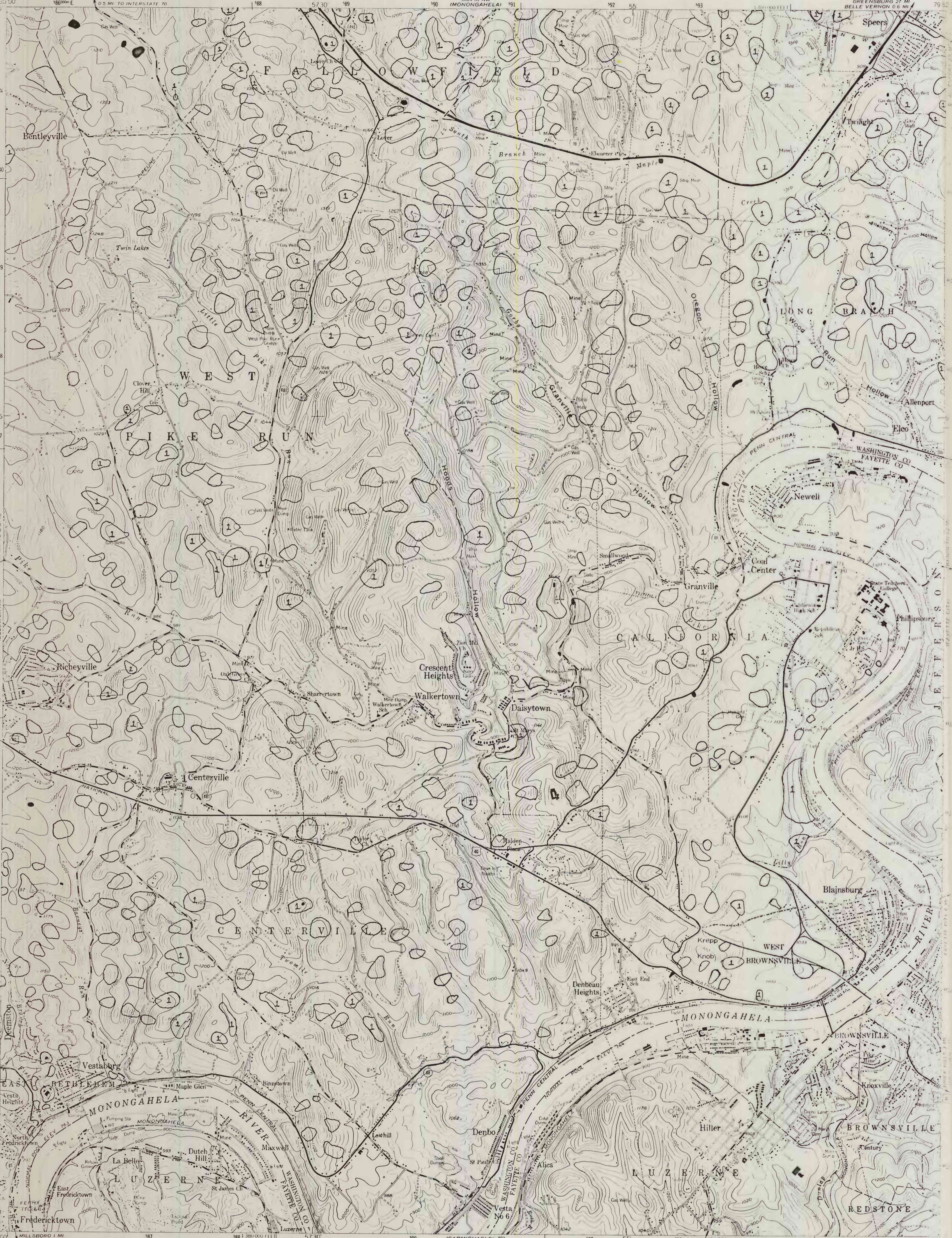


plate 3 of 8

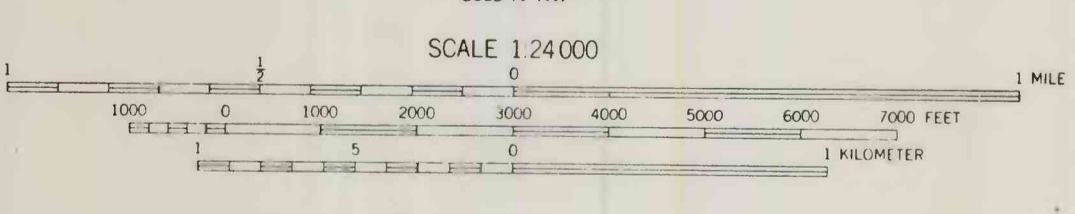
UNITED STATES  
DEPARTMENT OF THE INTERIOR  
GEOLOGICAL SURVEY

U. S. Geological Survey  
OPEN FILE MAP 76-790  
This map is preliminary and has  
not been edited for conformity  
with Geological Survey standards  
or nomenclature.

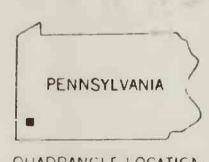
LANDSLIDES  
CALIFORNIA QUADRANGLE  
PENNSYLVANIA  
7.5 MINUTE SERIES (TOPOGRAPHIC)



Mapped, edited, and published by the Geological Survey  
Control by USGS and USC&GS  
Topography from aerial photographs by multiplex methods  
Aerial photographs taken 1952. Field check 1954  
Polyconic projection 1927 North American datum  
10,000-foot grid based on Pennsylvania coordinate system, south zone  
1000-meter Universal Transverse Mercator grid ticks, zone 17,  
shown in blue  
Red tint indicates areas in which only landmark buildings are shown  
Broken contours in strip mine areas indicate mining  
since photography



ROAD CLASSIFICATION  
Heavy-duty ——— Light-duty ———  
Medium-duty ——— Unimproved dirt ———  
U. S. Route —○— State Route —○—



THIS MAP COMPLIES WITH NATIONAL MAP ACCURACY STANDARDS  
FOR SALE BY U. S. GEOLOGICAL SURVEY, WASHINGTON, D. C. 20242  
A FOLDER DESCRIBING TOPOGRAPHIC MAPS AND SYMBOLS IS AVAILABLE ON REQUEST

CALIFORNIA, PA  
SW/4 BROWNSVILLE IS. QUADRANGLE  
N4000-7952 5/7.5  
1954  
AMS 5044 11 SW-SEP 51

*Primary road (Washington Co. road) to landslide site?*  
L.S. 1

76-790