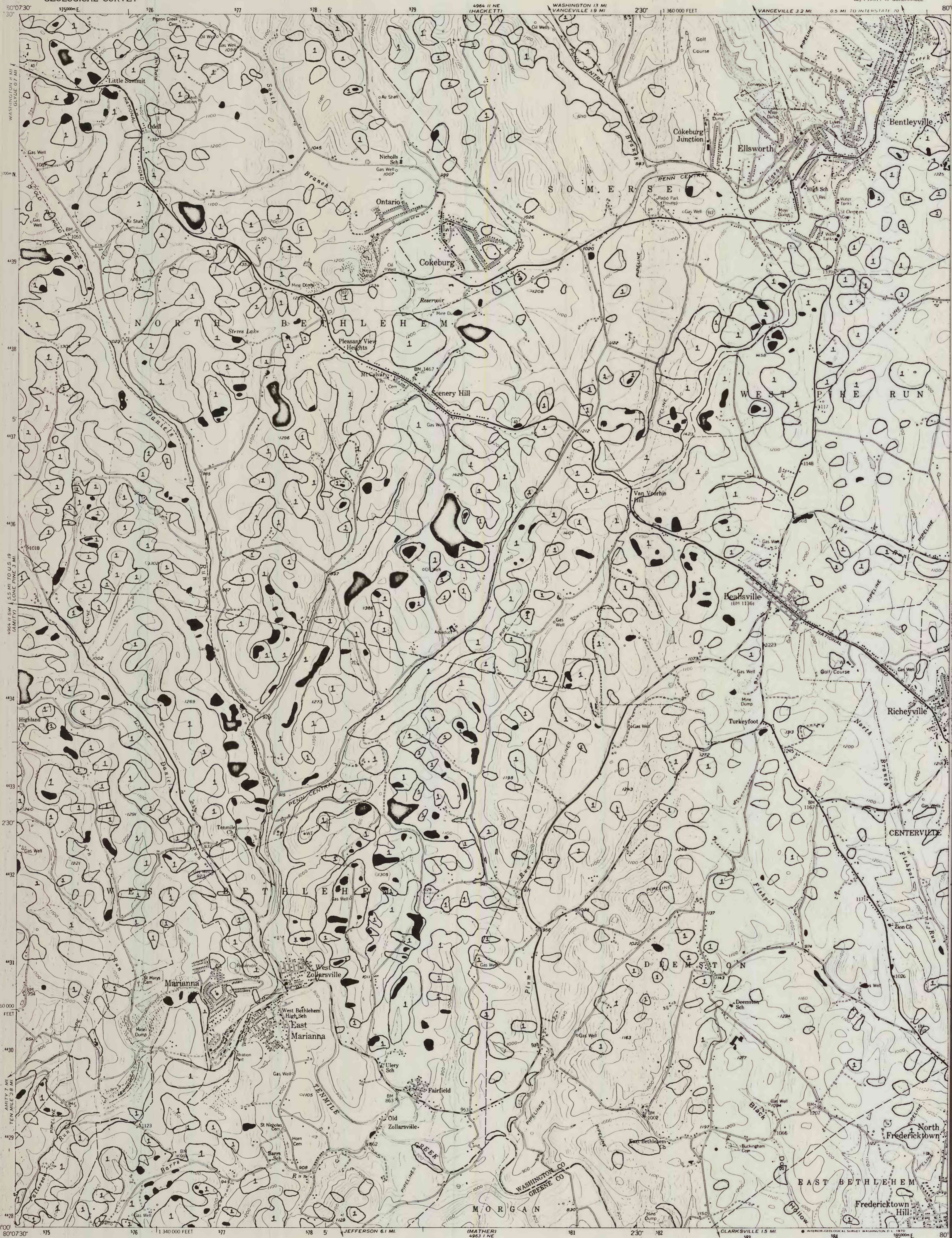


plate 5 of 8

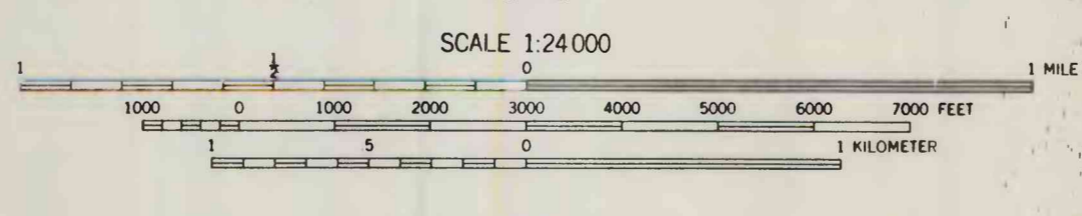
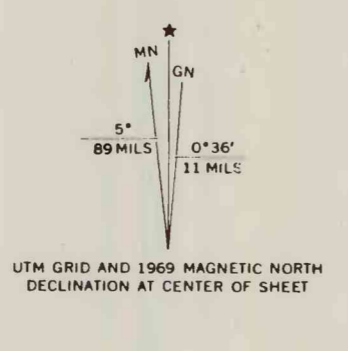
UNITED STATES
DEPARTMENT OF THE INTERIOR
GEOLOGICAL SURVEY

U. S. Geological Survey
OPEN FILE MAP 76-790
This map is preliminary and has
not been edited for conformity
with Geological Survey standards
or nomenclature.

LANDSLIDES
ELLSWORTH QUADRANGLE
PENNSYLVANIA
75 MINUTE SERIES (TOPOGRAPHIC)
SE 1/4 AMITY 15 QUADRANGLE



Mapped, edited, and published by the Geological Survey
Control by USGS and USC&GS
Topography from aerial photographs by multiplex methods
Aerial photographs taken 1952. Field check 1954
Polyconic projection. 1927 North American datum
10,000-foot grid based on Pennsylvania coordinate system, south zone
1000-meter Universal Transverse Mercator grid ticks, zone 17,
shown in blue
Revisions shown in purple compiled in cooperation with
State of Pennsylvania agencies from aerial photographs taken 1969
This information not field checked



THIS MAP COMPLIES WITH NATIONAL MAP ACCURACY STANDARDS
FOR SALE BY U. S. GEOLOGICAL SURVEY, WASHINGTON, D. C. 20242
A FOLDER DESCRIBING TOPOGRAPHIC MAPS AND SYMBOLS IS AVAILABLE ON REQUEST

ELLSWORTH, PA.
SE 1/4 AMITY 15 QUADRANGLE
N4000-W8000/7.5
1954
PHOTOREVISED 1969
AMS 4964 II SE-SERIES V831

Washington (Washington Co., West) 1:24,000, 1976
sheet 5
Log 1
76-790 III