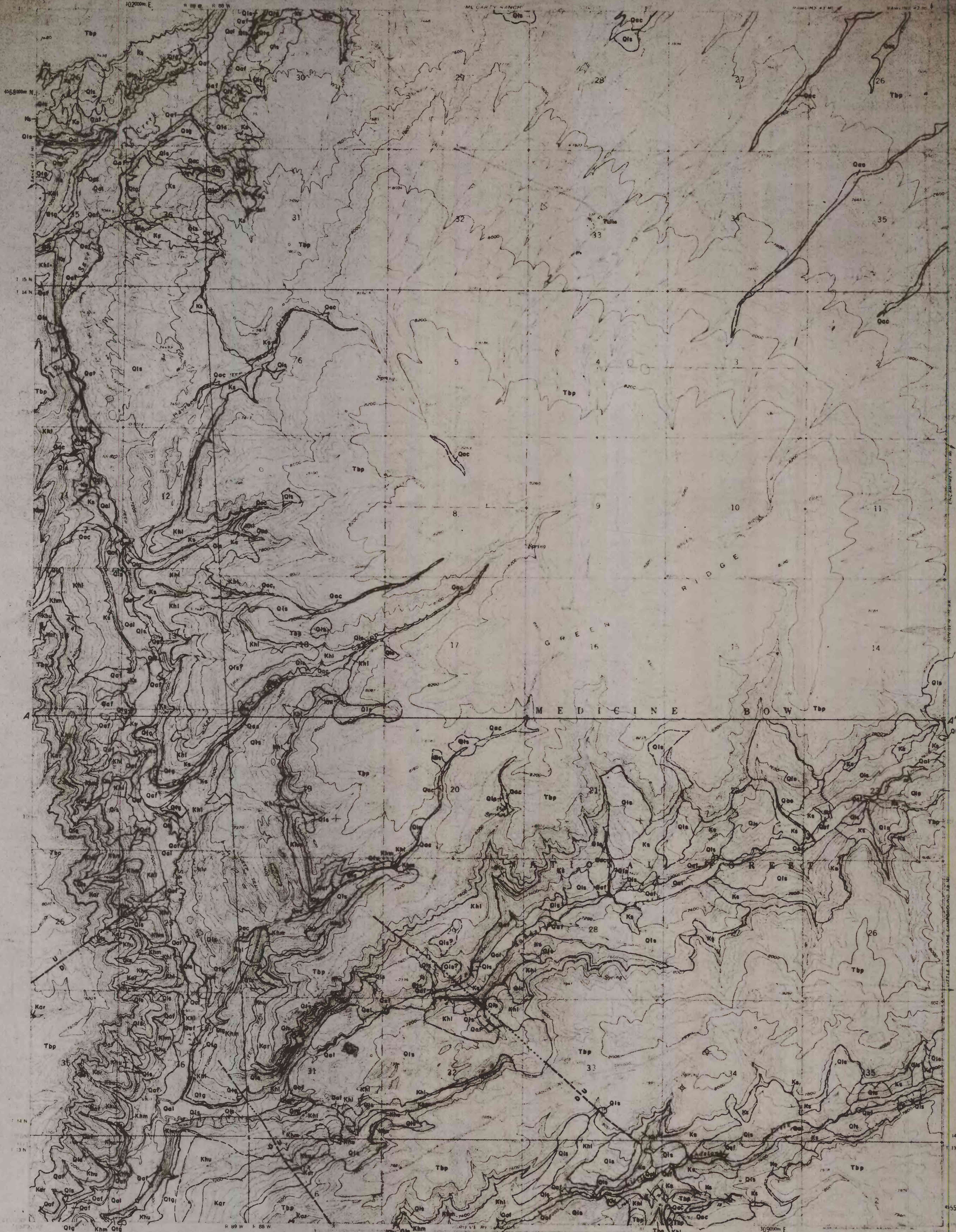


ADVANCE PROOF
SUBJECT TO CORRECTION
SCALE 1:24,000

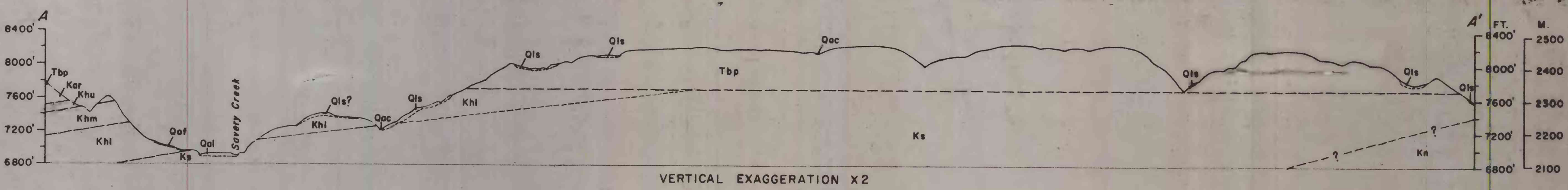
UNITED STATES
DEPARTMENT OF THE INTERIOR
GEOLOGICAL SURVEY

TULLIS QUADRANGLE
WYOMING-CARBON CO.
5 MINUTE SERIES (TOPOGRAPHIC)



Map made, revised, and published by the Geological Survey as part of the Department of the Interior program for the development of the Missouri River Basin.
Topography by 1960, contour interval 40 feet.
Base map by 1960, contour interval 40 feet.
1:24,000 scale map of Missouri River Basin, Carbon County, Wyoming, published by the Geological Survey, 1976.

Mapped during Sept., 1970 and July-Oct., 1971; assisted by Sebastian Lomena during Sept., 1970, and by W. B. Hanson during July and August, 1971.
Unpublished data.



PRELIMINARY
GEOLOGIC MAP OF THE TULLIS QUADRANGLE, CARBON COUNTY, WYOMING
By
C. S. V. Barclay
1976

NOTE
This map was prepared by the Geological Survey, U.S. Department of the Interior, as part of the Missouri River Basin program. It is published as an advance proof, subject to correction. The scale is 1:24,000. The map is based on topographic data from the 5-minute series (topographic) and geologic data from the 1:24,000 scale map of the Missouri River Basin, Carbon County, Wyoming, published by the Geological Survey, 1976.

OPEN-FILE REPORT
This report has not been edited for conformity with Geological Survey editorial standards or stratigraphic nomenclature.