



Birdwell
Density Log

COMPANY: U.S. GEOLOGICAL SURVEY
ENGINEERING, GEOPHYSICS

WELL: B-1
FIELD: JOHNSON
COUNTY: JOHNSON
STATE: WYOMING
LOCATION: GR/NI
CAL: E3

SEC: 35 TWP: 31N RGE: 82W
ELEVATIONS: 3-0

PREPARATION DATE: 27 MAY 75
LOG MADE FROM: SURFACE LOG
DATE: 27 MAY 75

LOG NO.: 182
DIPY LOG NUMBER: 530
DIPY LOG INTERVAL: 432
BOTTOM LOGGED INTERVAL: 432
TYPE FLUID IN HOLE: MUD

STAINITY PER. CL.
DENSITY PER. CL.
MAX. REG. TEMP. - DEG. F
OPERATING RIG TIME
RECORDED BY
CHECKED BY
LOCATION
CLIFTON

BORE HOLE RECORD
RUN NO. FROM TO
1 295' 25'
2 430' 25'

CASING RECORD TO
1 0' 25'
2 1.0' 25'

GAMMA-GAMMA EQUIPMENT DATA

RUN NO.	1	TOOL SPACING	19"
TOOL MODEL NO.	LACD-800	SOURCE	M-850 CS-137 400MC
DIA. (IN)	2-1/4"	DIRECT ZERO LOC.	0
SUB	BA	DISTANCE B OR D	4-17 1/2"
DETECT. MODEL NO.	9371 TN	NOMINAL HOLE DIA.	2 3/8"
		TRUCK NO.	2346

GAMMA-GAMMA LOGGING DATA

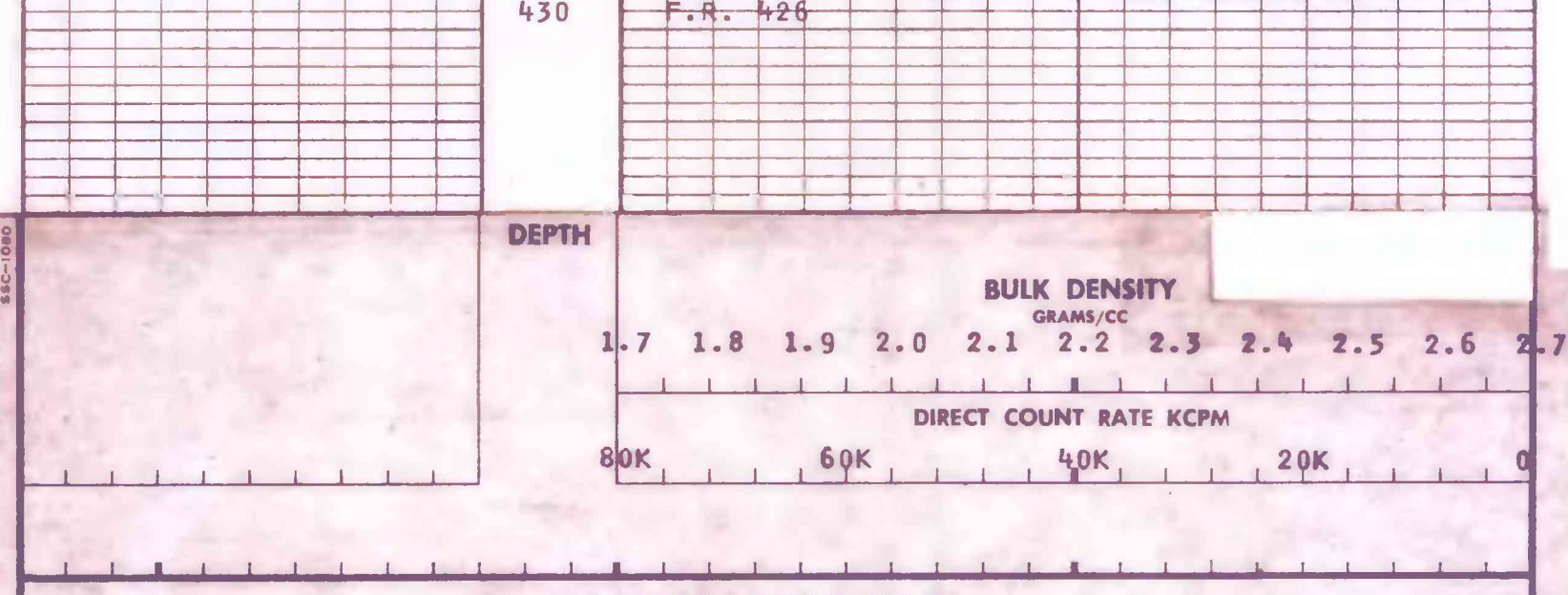
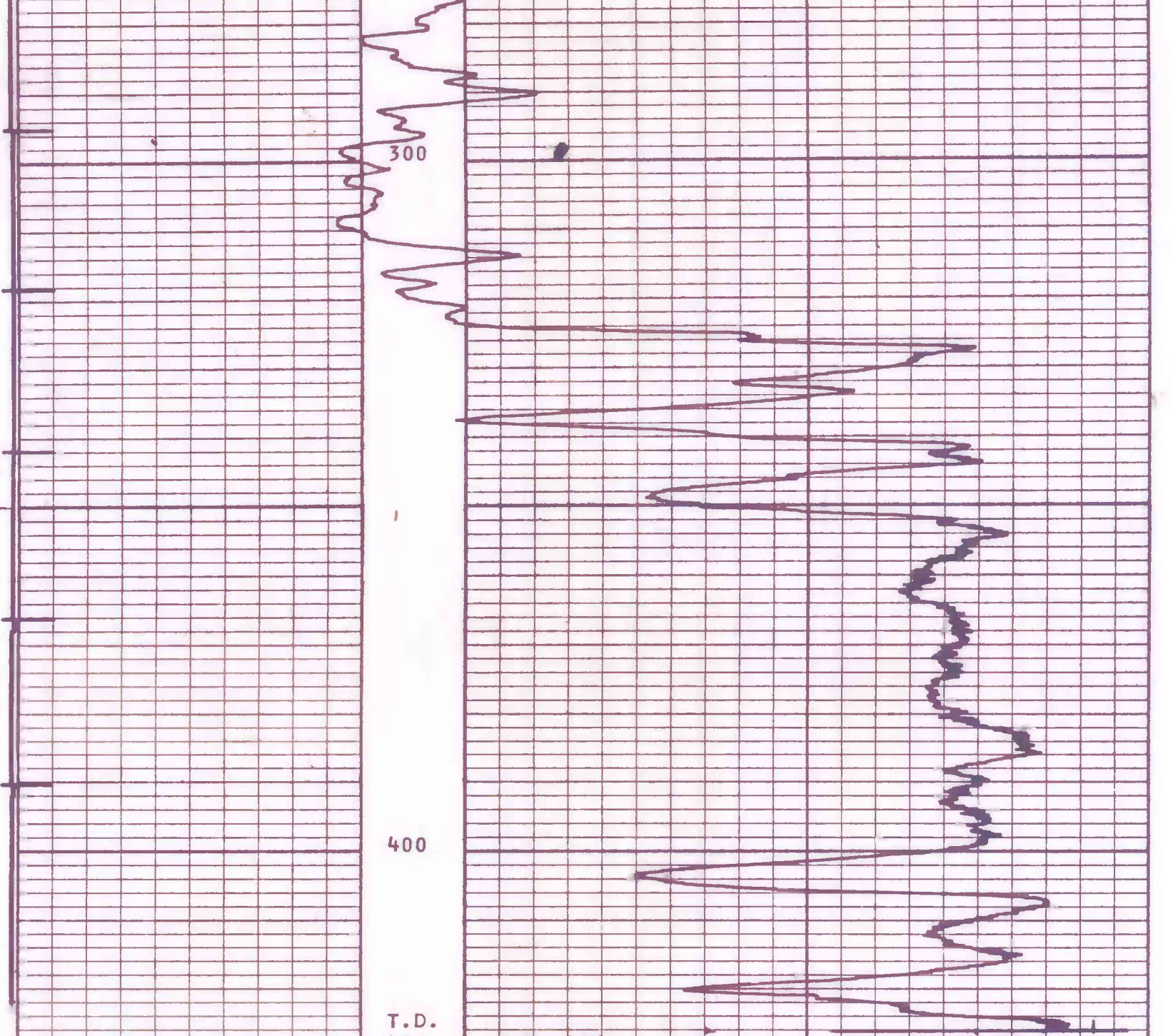
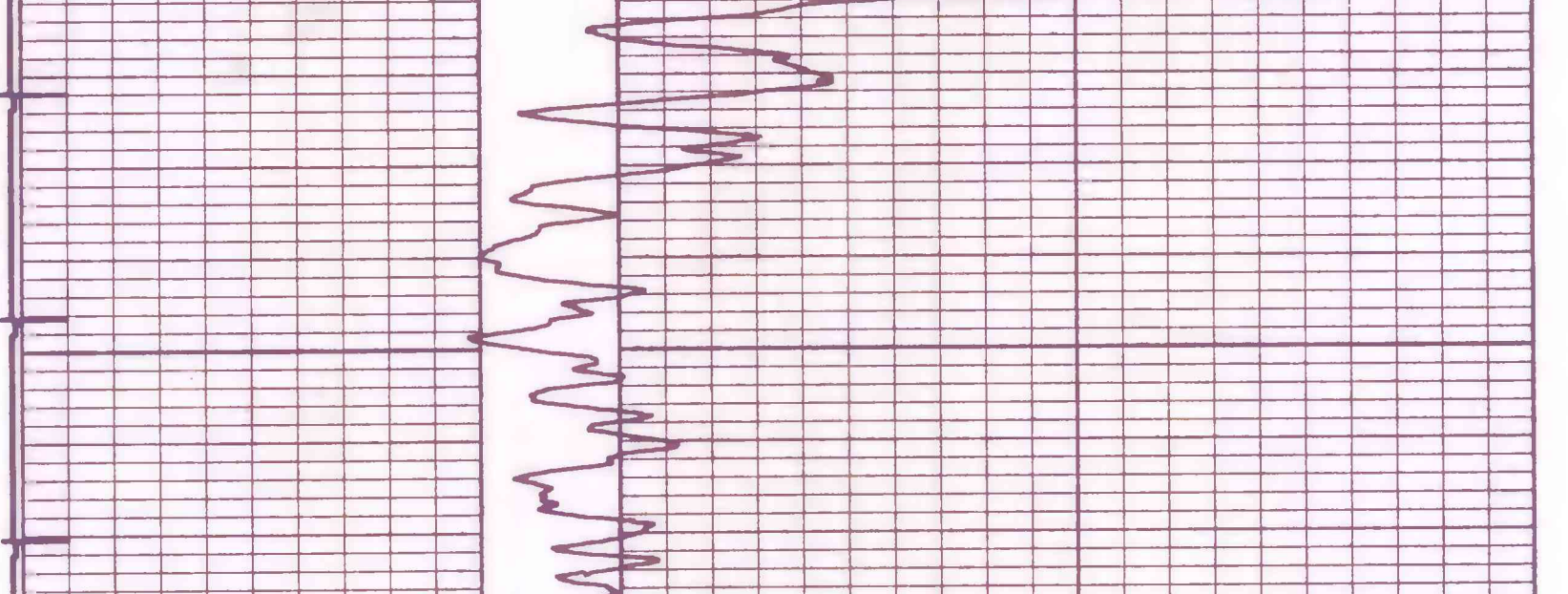
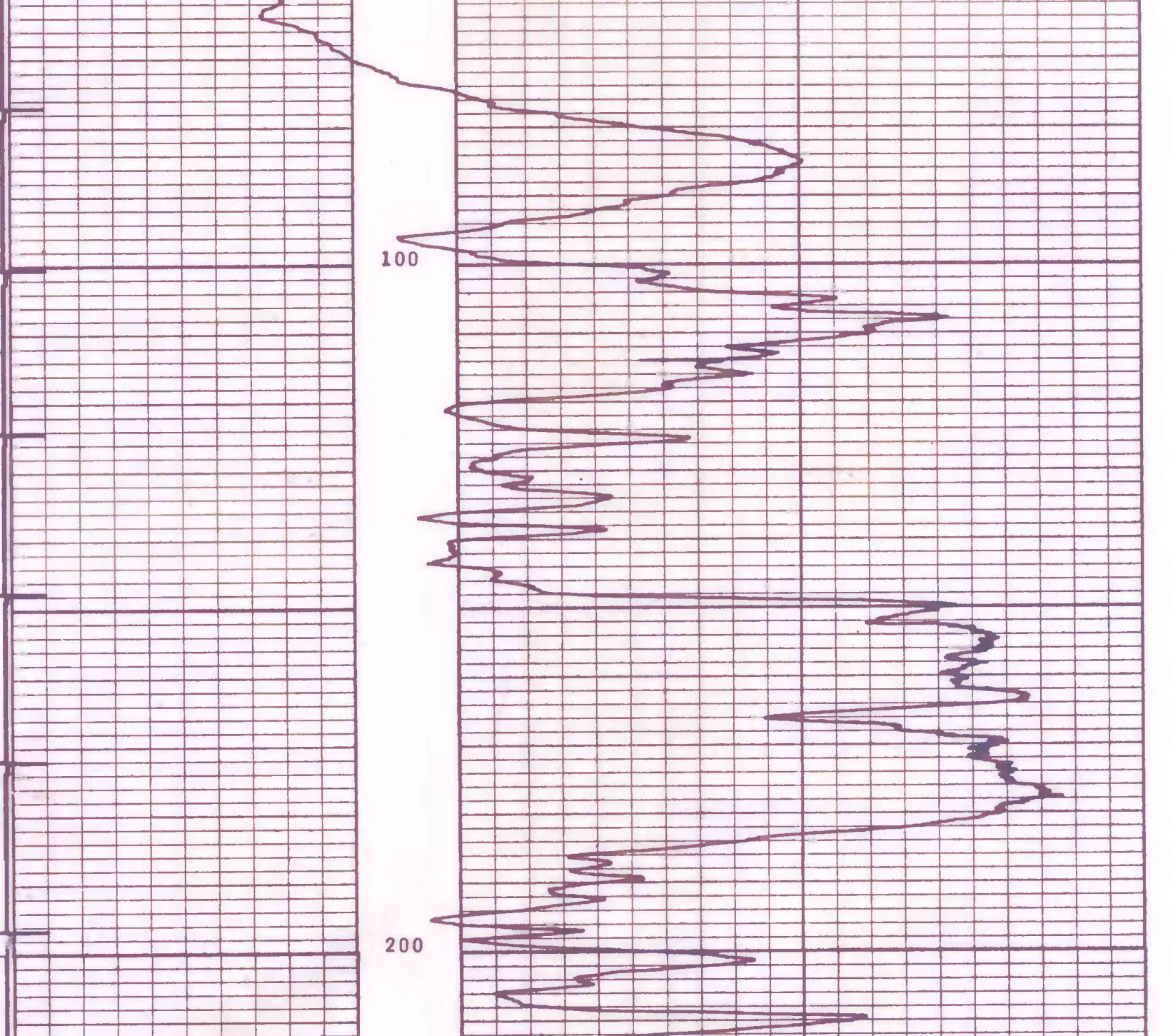
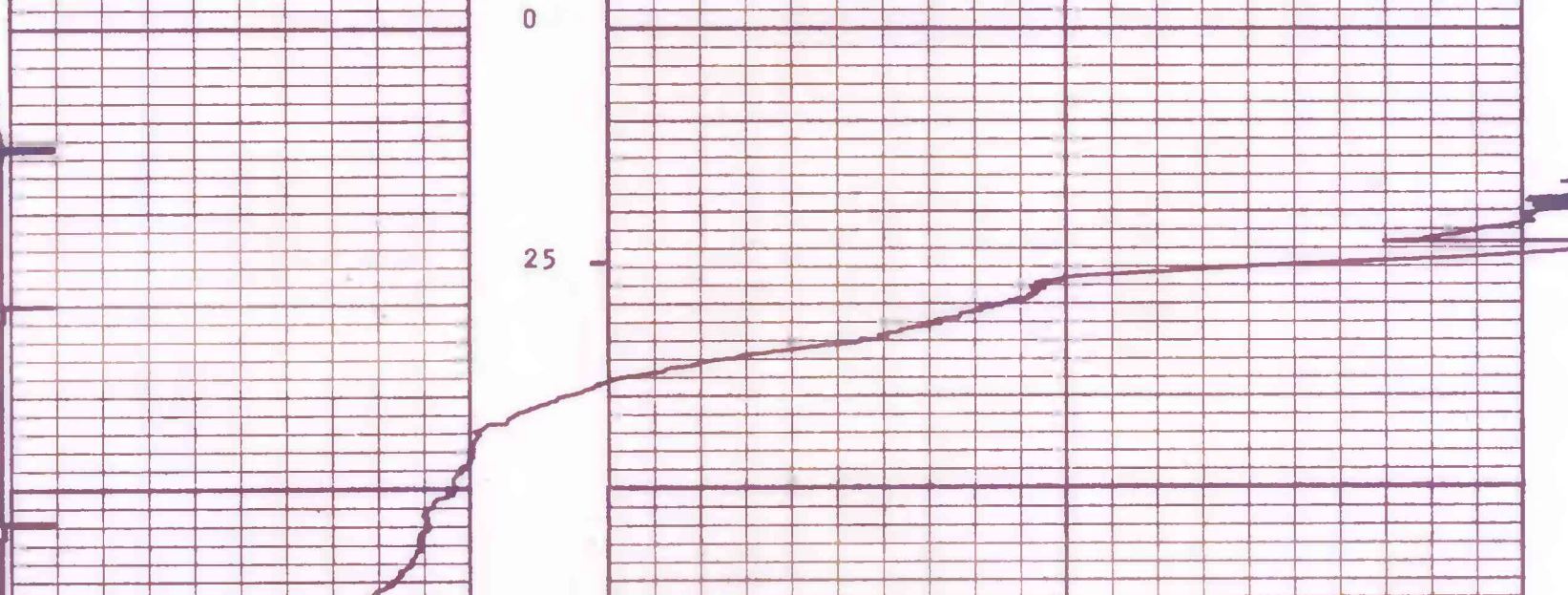
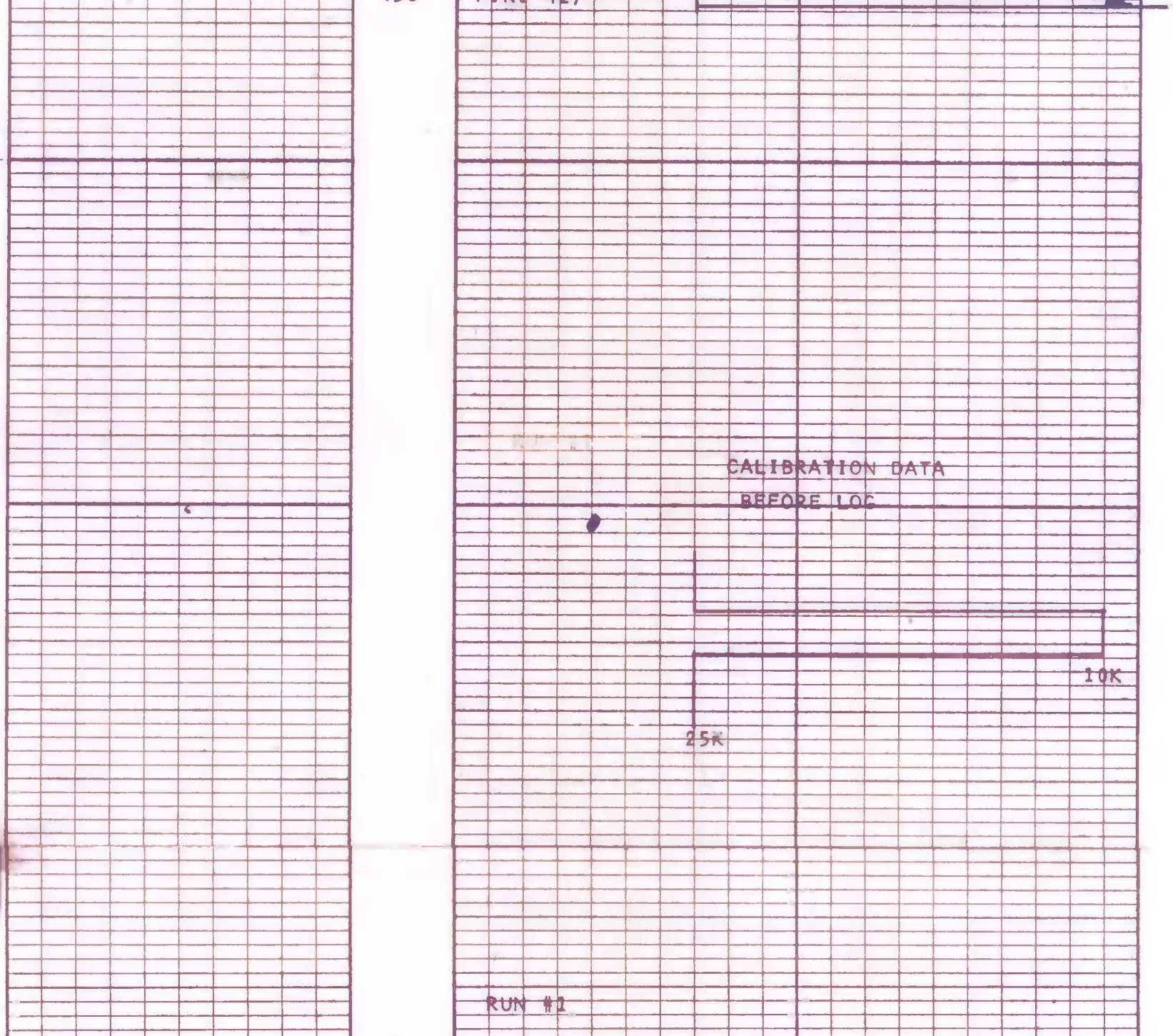
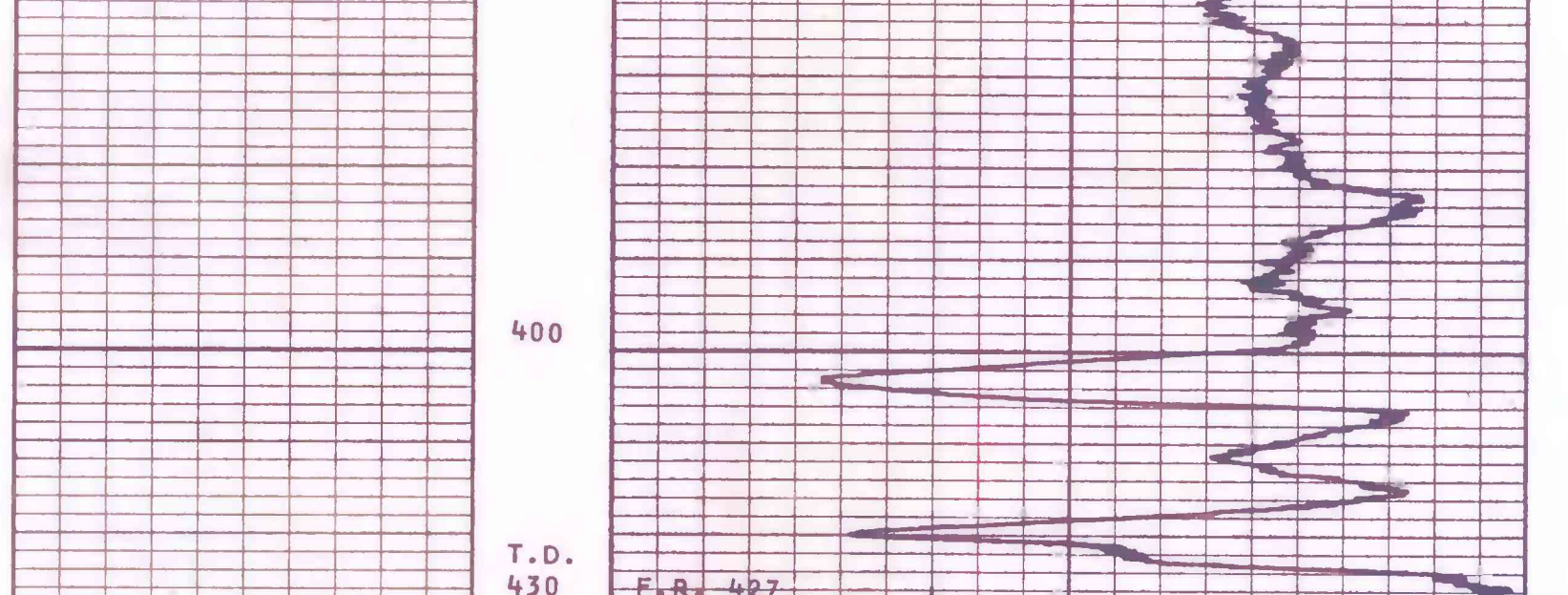
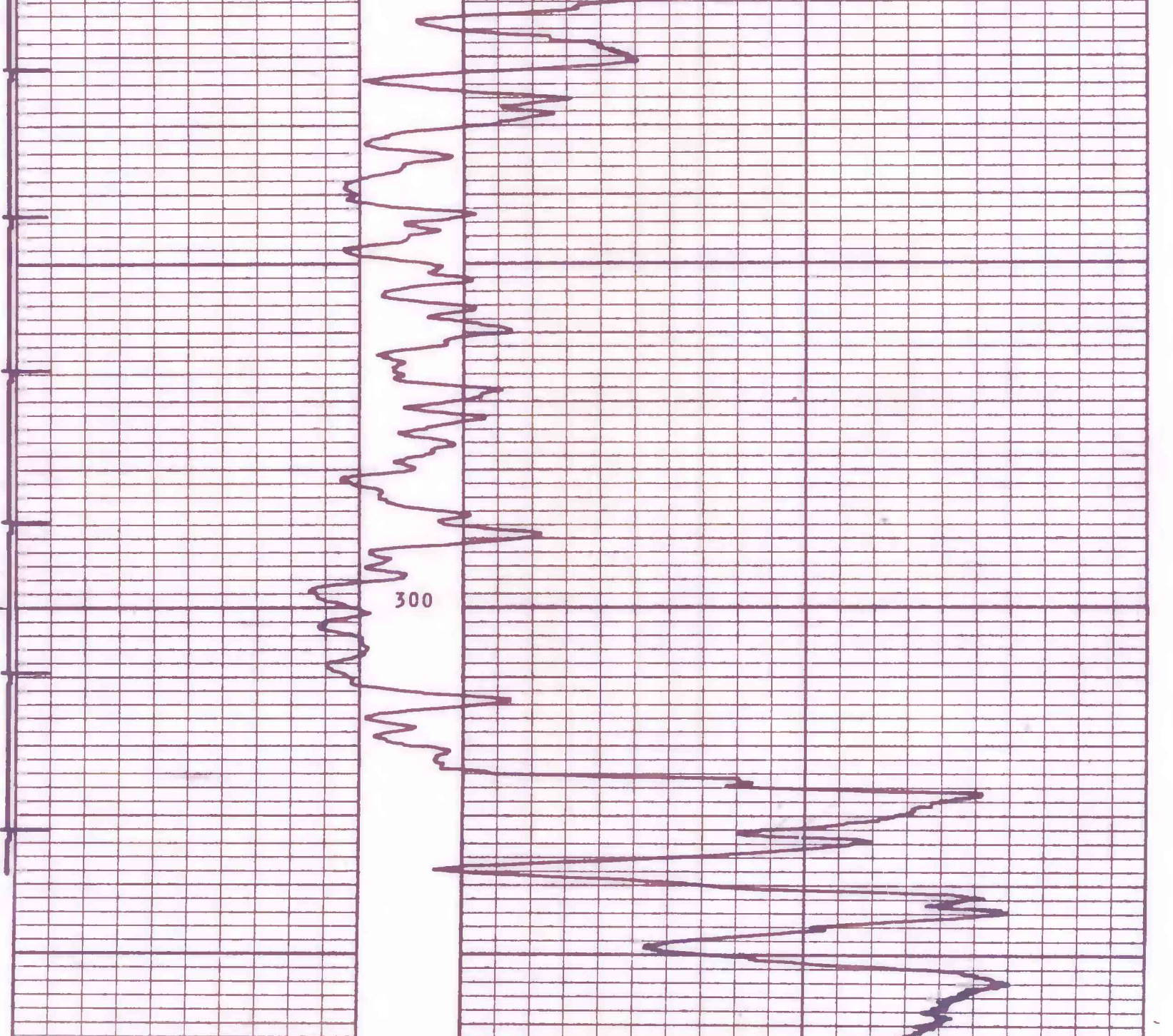
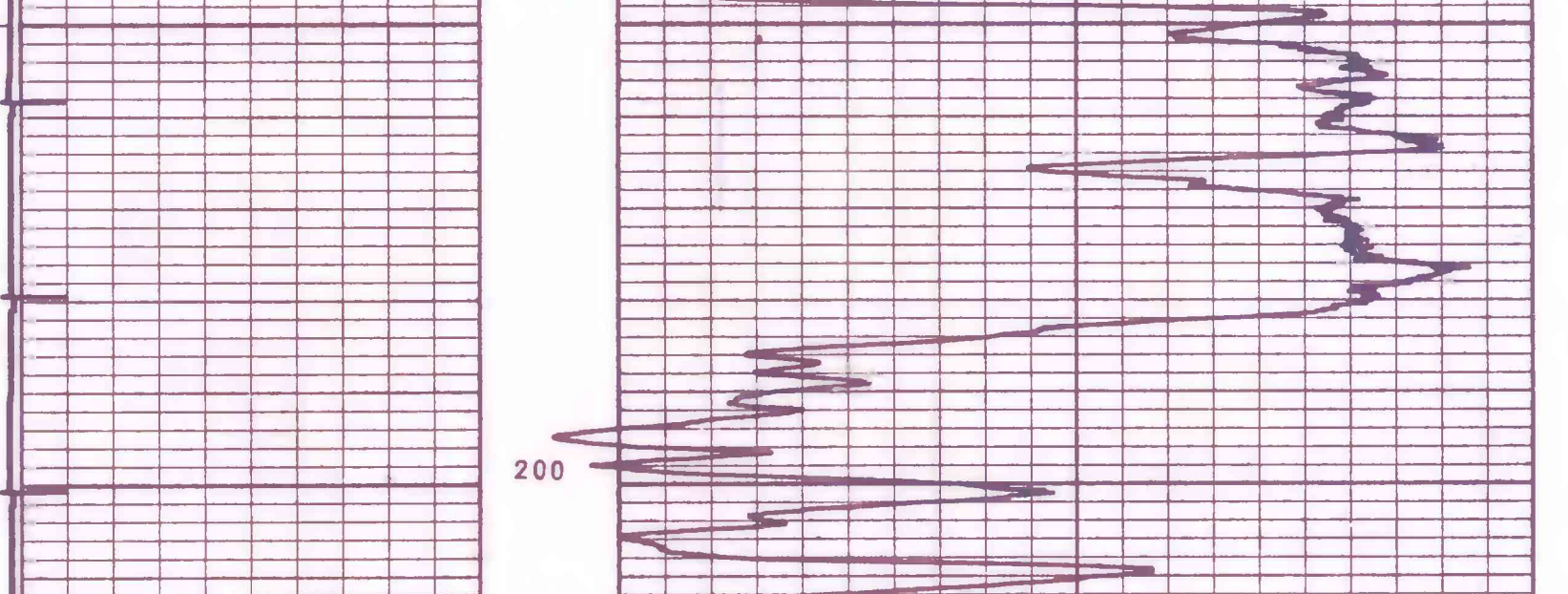
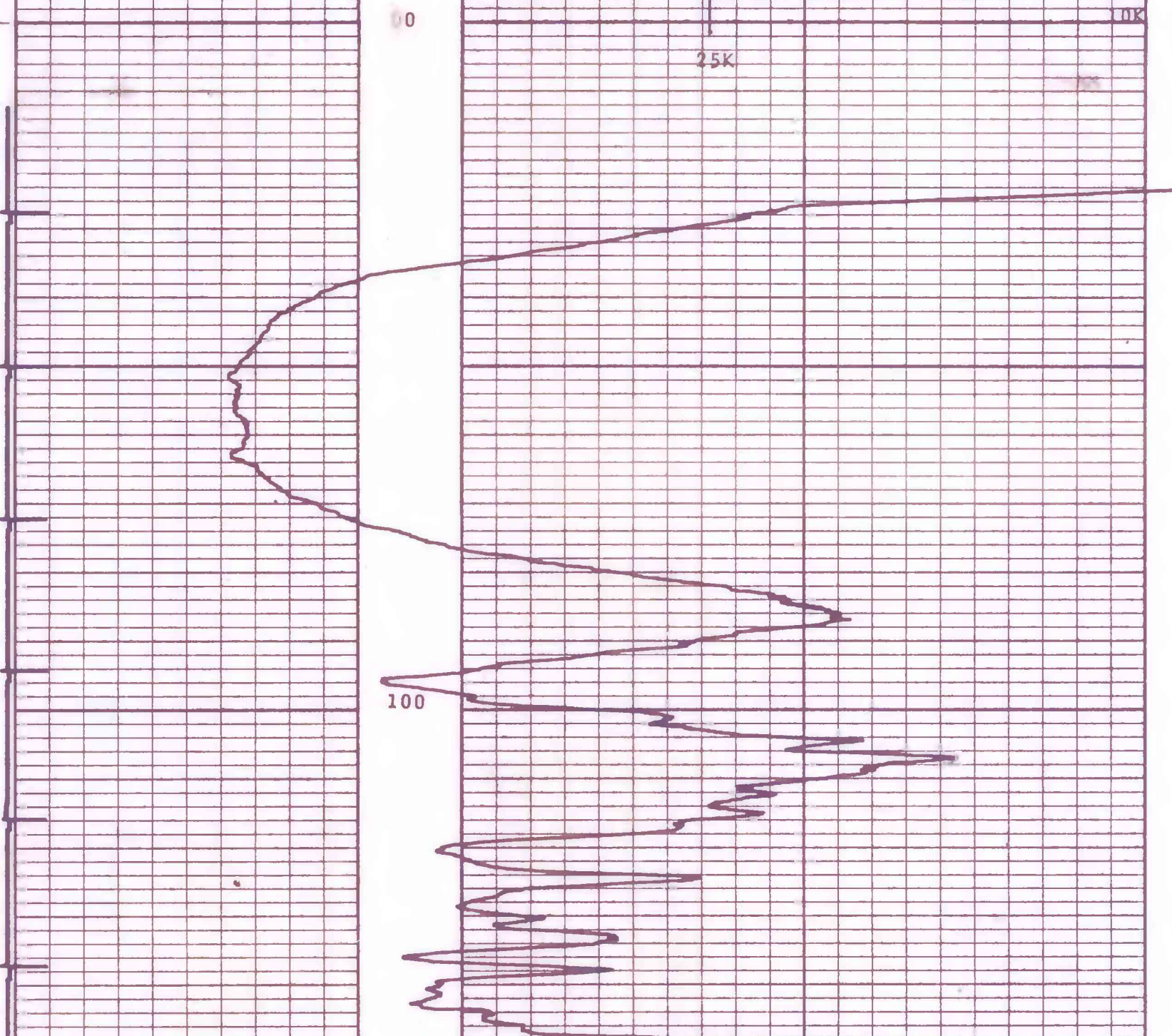
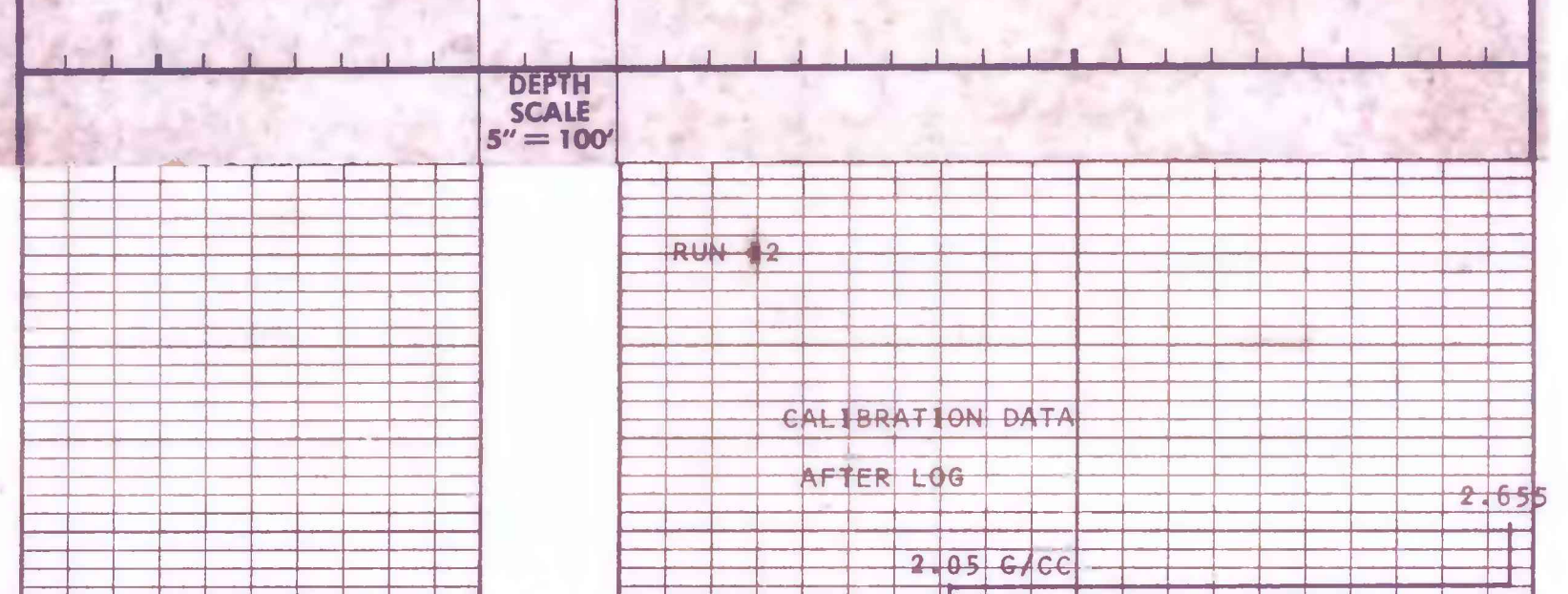
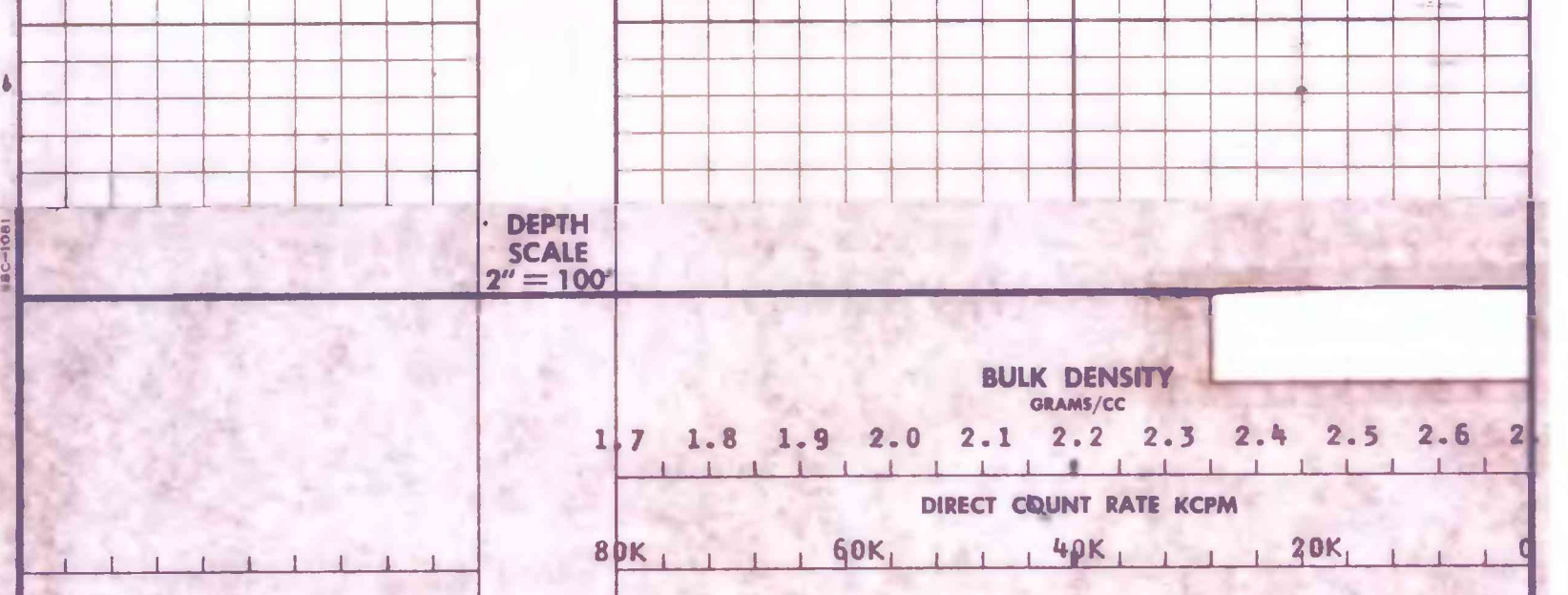
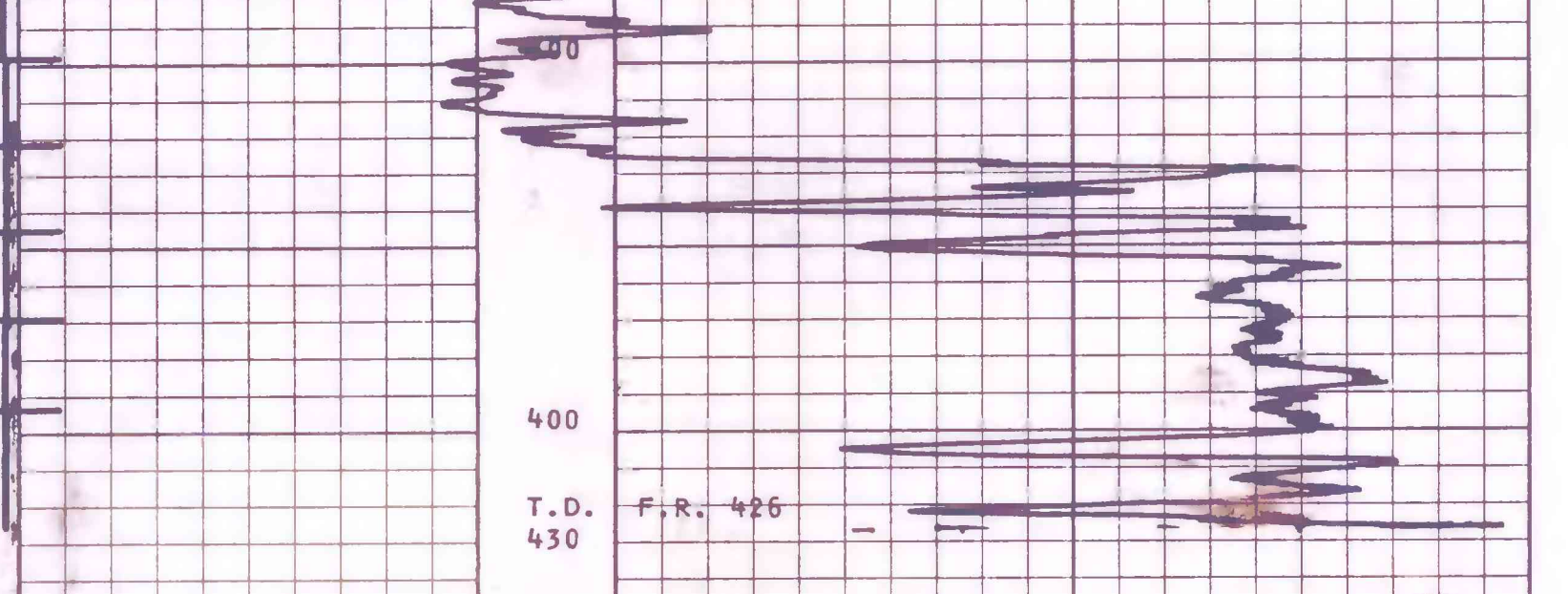
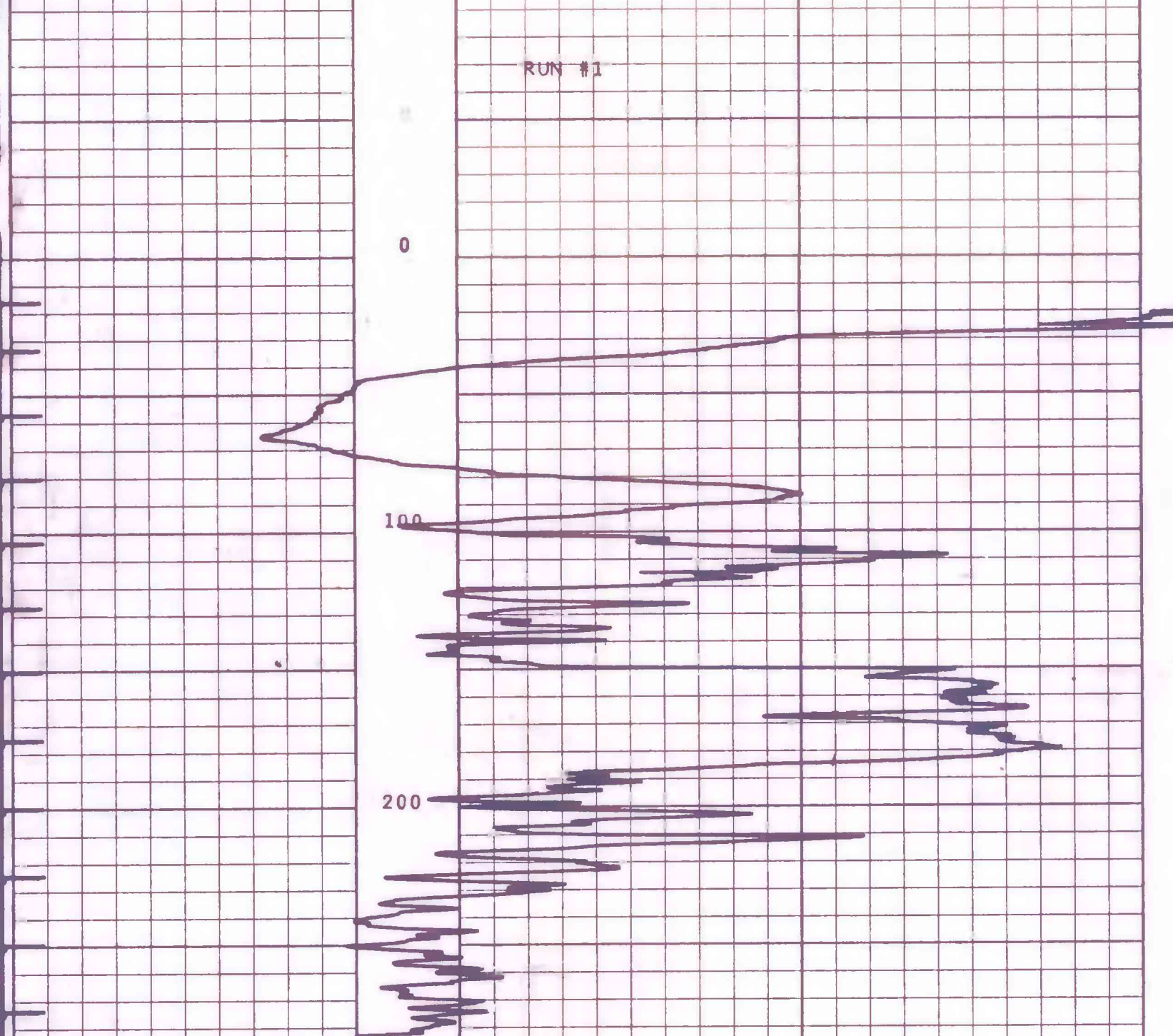
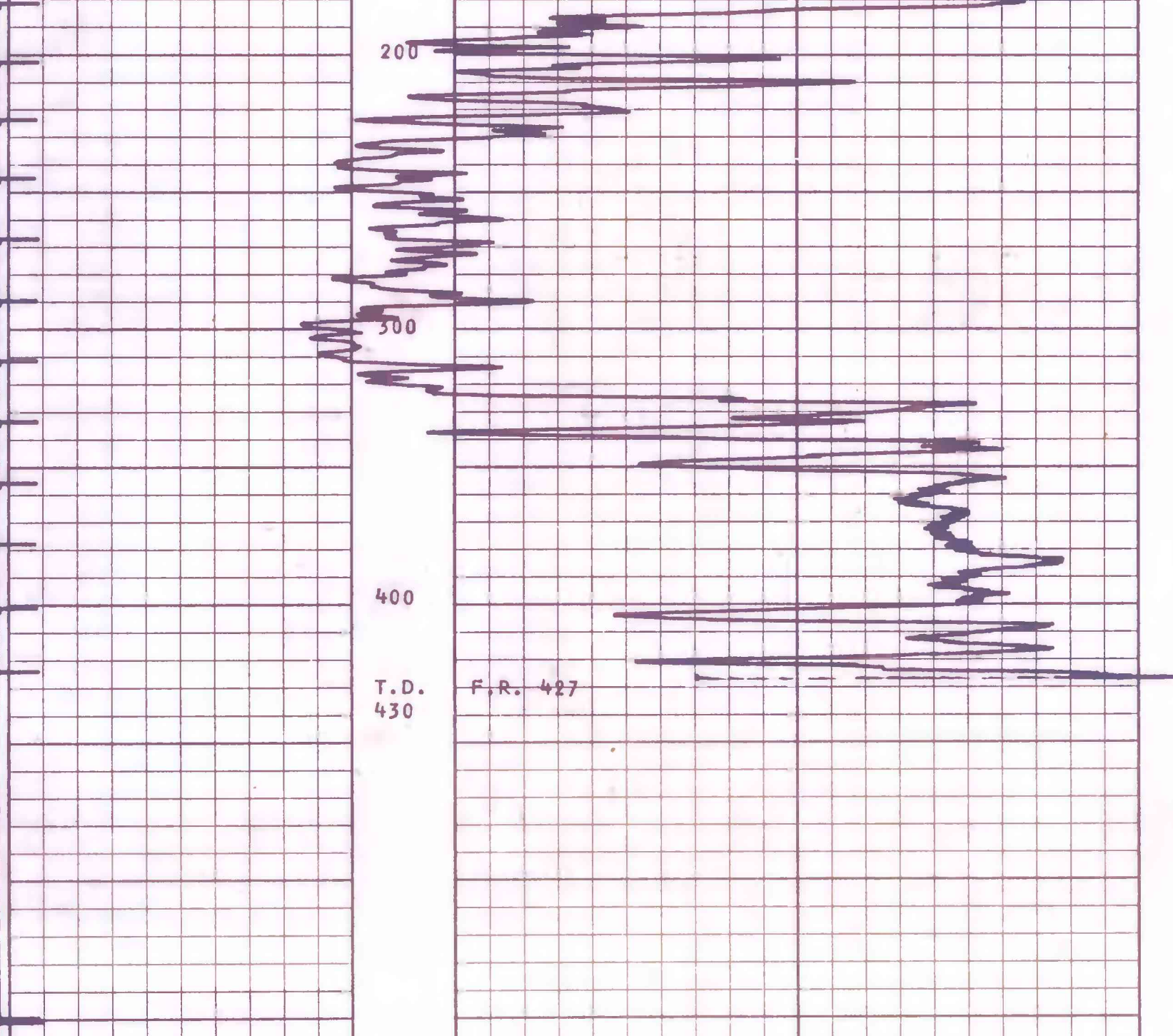
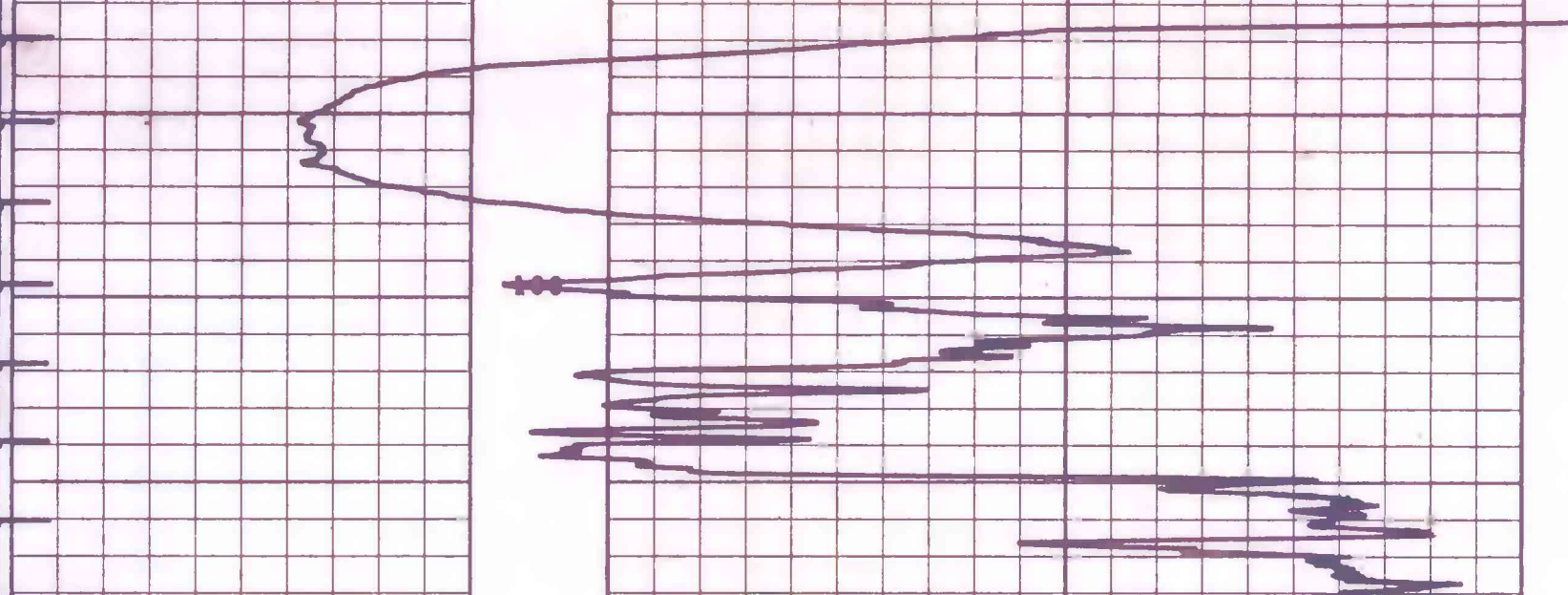
RUN NO.	FROM	TO	SPEED MIN	TC SEC	CPM FULL SCALE	DIRECT CPM/DIV.	LINEAR GMS/DIV.	PRIMARY REFERENCE EQUIVALENT DEN. G/CC	M-45K	1.695	1.85-1.95
1	427'	25'	20	3	20X10 ⁴	.05	.05	SECONDARY REF.			
2	427'	25'	20	3	20X10 ⁴	.05	.05	EQUIVALENT DEN. G/CC			
								KCPM BEFORE LOG			
								KCPM AFTER LOG			
								RECORDED CAL REF	10K		25K
								EQUIVALENT DEN. G/CC	2.035		2.285

REMARKS: THIS WORK WAS PERFORMED UNDER UNITED STATES ATOMIC ENERGY COMMISSION BY-PRODUCT MATERIAL LICENSE NO. 35-5651-1

GRAIN DENSITY GMS/CC:
FLUID DENSITY GMS/CC:
NA: INFORMATION NOT AVAILABLE

SHOW RUN #1&2, DELETE RUN #3

NOTE: RECORDED BULK DENSITY MUST BE CORRECTED FOR STANDOFF (PROXIMITY INDEX)



CALIBRATION DATA

COMPANY: U.S. GEOLOGICAL SURVEY
WELL: B-1
FIELD: JOHNSON
LOCATION: JOHNSON
STATE: WYOMING

DRILLER: T.D. 530
BIRDWELL T.D. 530
BIRDWELL F.R. 427
ELEV.: K.B.
D.F.: 4600 EST
G.I.: 4600 EST

DATE: 27 MAY 75

Birdwell Division
Schnabel Service Corporation