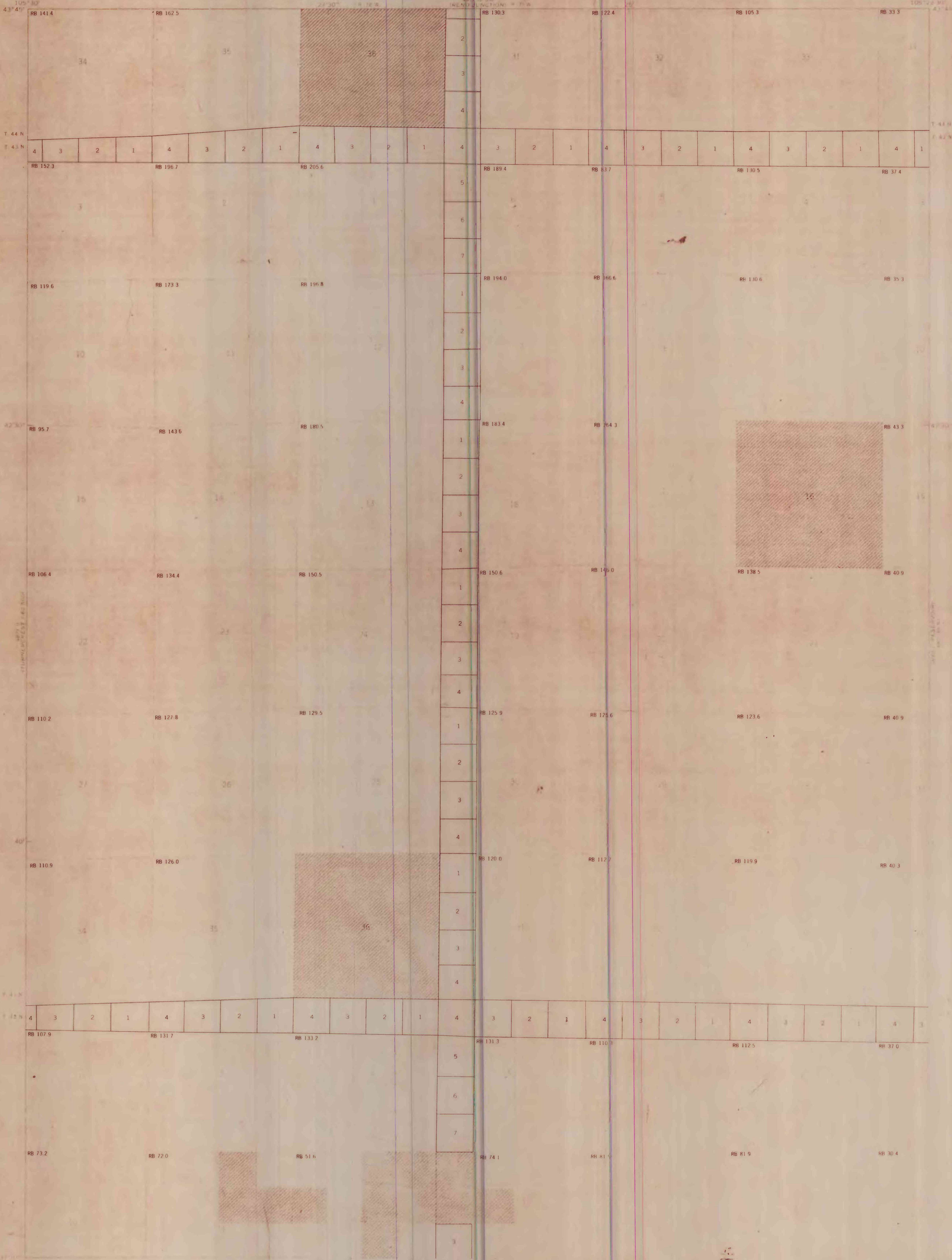



This report has not been edited for conformity with U.S. Geological Survey editorial standards or stratigraphic nomenclature.



EXPLANATION

 NON-FEDERAL COAL LAND—land for which the Federal Government does not own the coal rights.

RB 146.0

TOTAL RESERVE BASE (RB) OF COAL PER SECTION—In millions of short tons, calculated for each section of Federal land following the guidelines given in U.S. Geol. Survey Bulletin 1450-B. To convert short tons to metric tonnes, multiply short tons by 0.9072.

4	3	2	1
5			
6			
7			

SECTION OF LAND—Showing lots and lot numbers

REFERENCE

U.S. Bureau of Mines and U.S. Geological Survey, 1976, Coal resource classification system of the U.S. Bureau of Mines and U.S. Geological Survey: U.S. Geol. Survey Bull. 1450-B, 7 p.

Base from U.S. Geological Survey, 1971

Compiled in 1976

COAL RESOURCE OCCURRENCE MAP OF THE LITTLE THUNDER RESERVOIR
QUADRANGLE, CAMPBELL COUNTY, WYOMING

BY
G. C. MARTIN
1977

PLATE 2
BOUNDARY AND COAL
DATA MAP