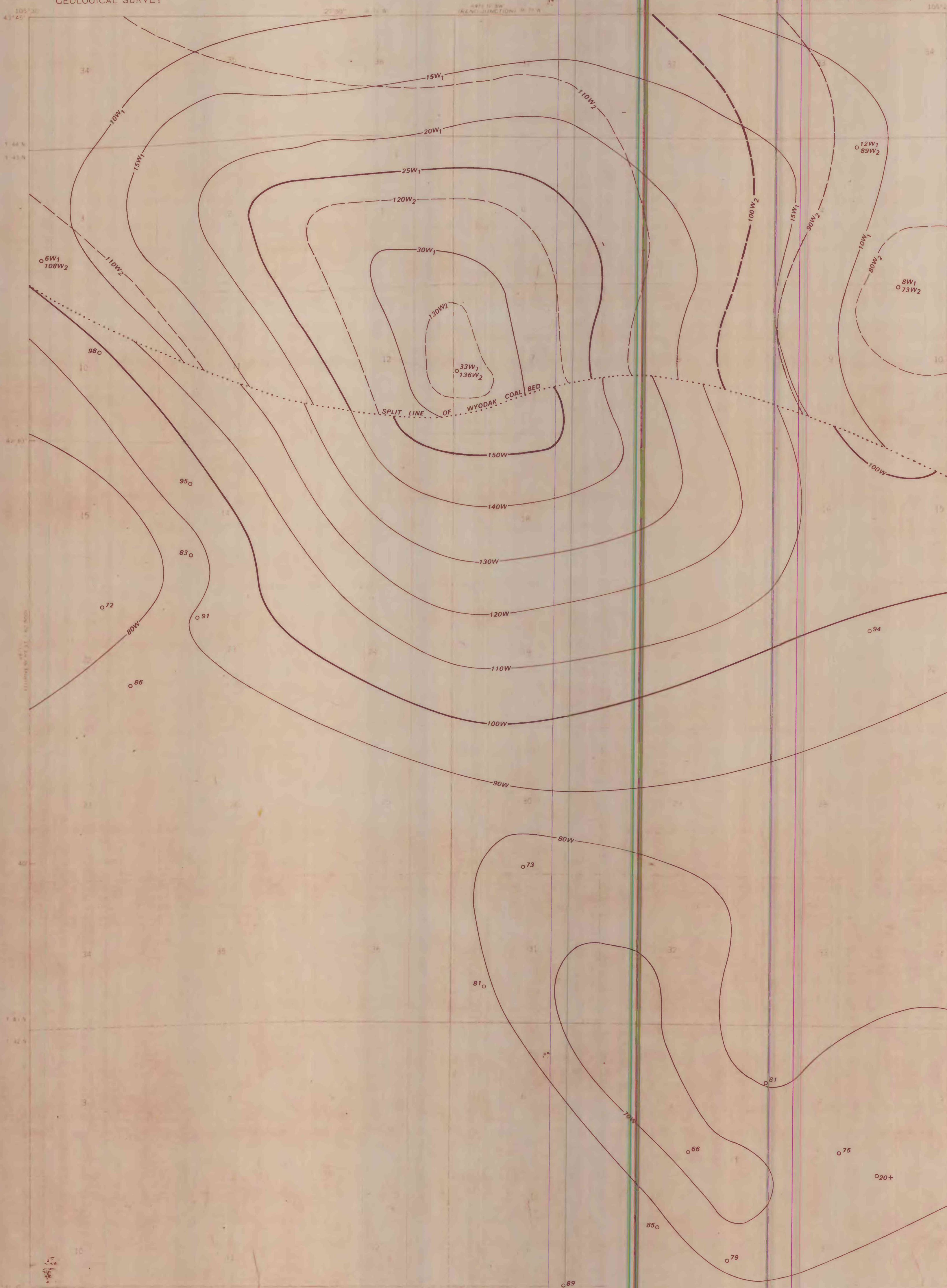


This report has not been edited
for conformity with U.S. Geological
Survey editorial standards or
stratigraphicomenclature.



EXPLANATION

— 100W —
— 90W —
ISOPACHS OF THE WYODAK COAL BED— Showing thickness in feet. Isopach interval 10 feet.

— 25W₁ —
— 20W₁ —
ISOPACHS OF THE W₁ SPLIT OF THE WYODAK COAL BED— Showing thickness in feet. Isopach interval 5 feet.

— 100W₂ —
— 90W₂ —
ISOPACHS OF THE W₂ SPLIT OF THE WYODAK COAL BED— Showing thickness in feet. Isopach interval 10 feet.

○ 85
DRILL HOLE— Showing thickness of the Wyodak coal bed, in feet.

○ 8W₁
○ 73W₂
DRILL HOLE— Showing thickness of W₁ and W₂ splits of the Wyodak coal bed, in feet.

To convert feet to meters multiply feet by 0.3048.

Base from U.S. Geological Survey, 1971

Compiled in 1976

**COAL RESOURCE OCCURRENCE MAP OF THE LITTLE THUNDER RESERVOIR
QUADRANGLE, CAMPBELL COUNTY, WYOMING**
BY
G. C. MARTIN
1977

PLATE 4
ISOPACH MAP OF THE
WYODAK COAL BED