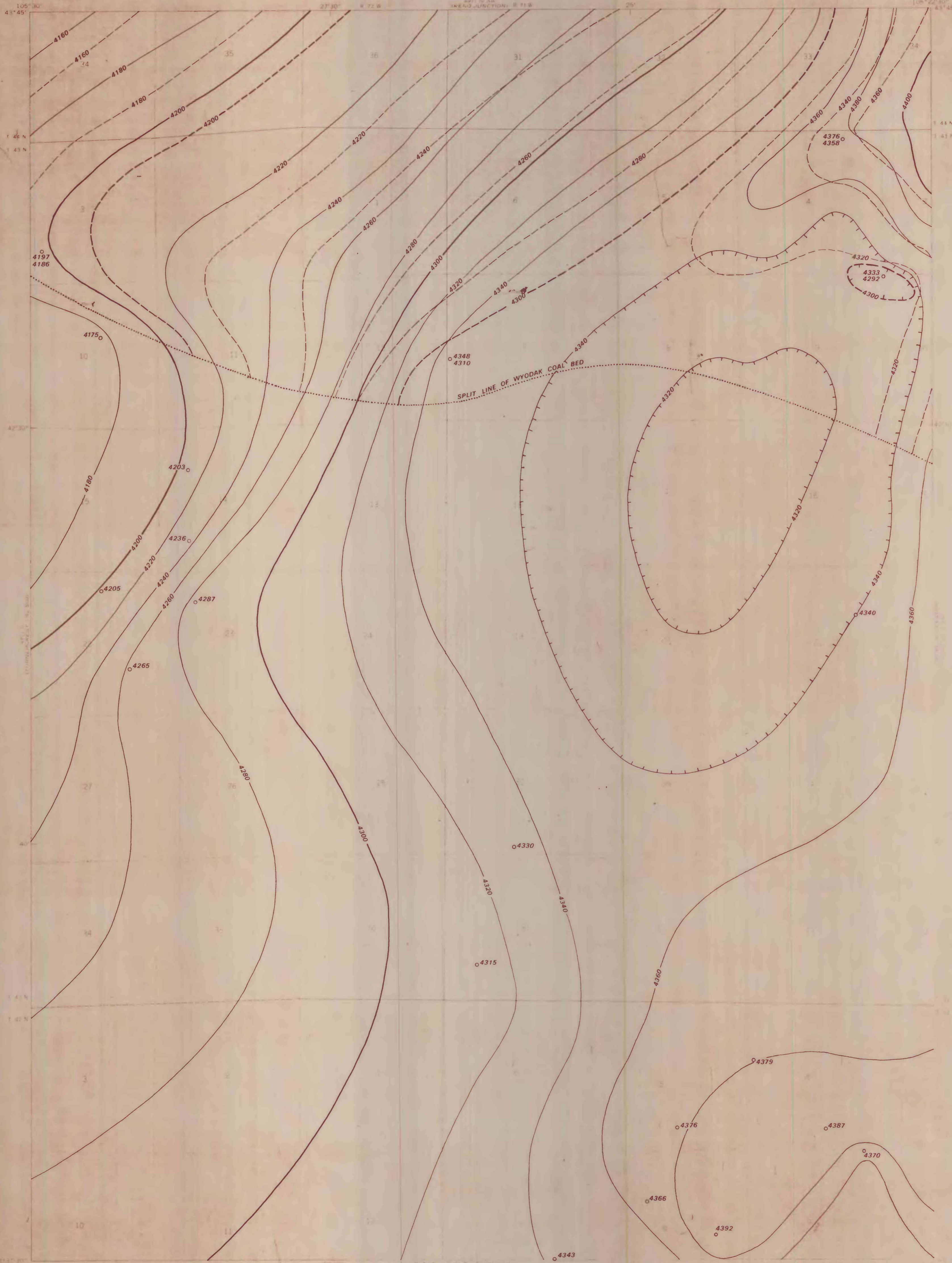
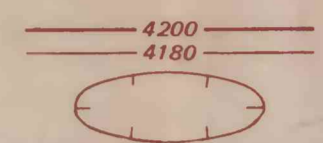


This report has not been edited for conformity with U.S. Geological Survey editorial standards or stratigraphic nomenclature.



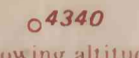
EXPLANATION



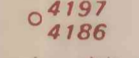
STRUCTURE CONTOURS—Drawn on top of the W₁ split of the Wyodak coal bed. Hachures indicate a closed depression. Contour interval 20 feet (6.1 m). Datum is mean sea level.



STRUCTURE CONTOURS—Drawn on top of the W₂ split of the Wyodak coal bed. Hachures indicate a closed depression. Contour interval 20 feet (6.1 m). Datum is mean sea level.



DRILL HOLE—Showing altitude at the top of the Wyodak coal bed.



DRILL HOLE—Showing altitudes of top of the W₁ (upper number) and top of the W₂ (lower number) splits of the Wyodak coal bed.

To convert feet to meters multiply feet by 0.3048.

Base from U.S. Geological Survey, 1971

Compiled in 1976

COAL RESOURCE OCCURRENCE MAP OF THE LITTLE THUNDER RESERVOIR
QUADRANGLE, CAMPBELL COUNTY, WYOMING

BY
G. C. MARTIN
1977

PLATE 10
STRUCTURE CONTOUR MAP OF
THE WYODAK COAL BED AND SPLITS