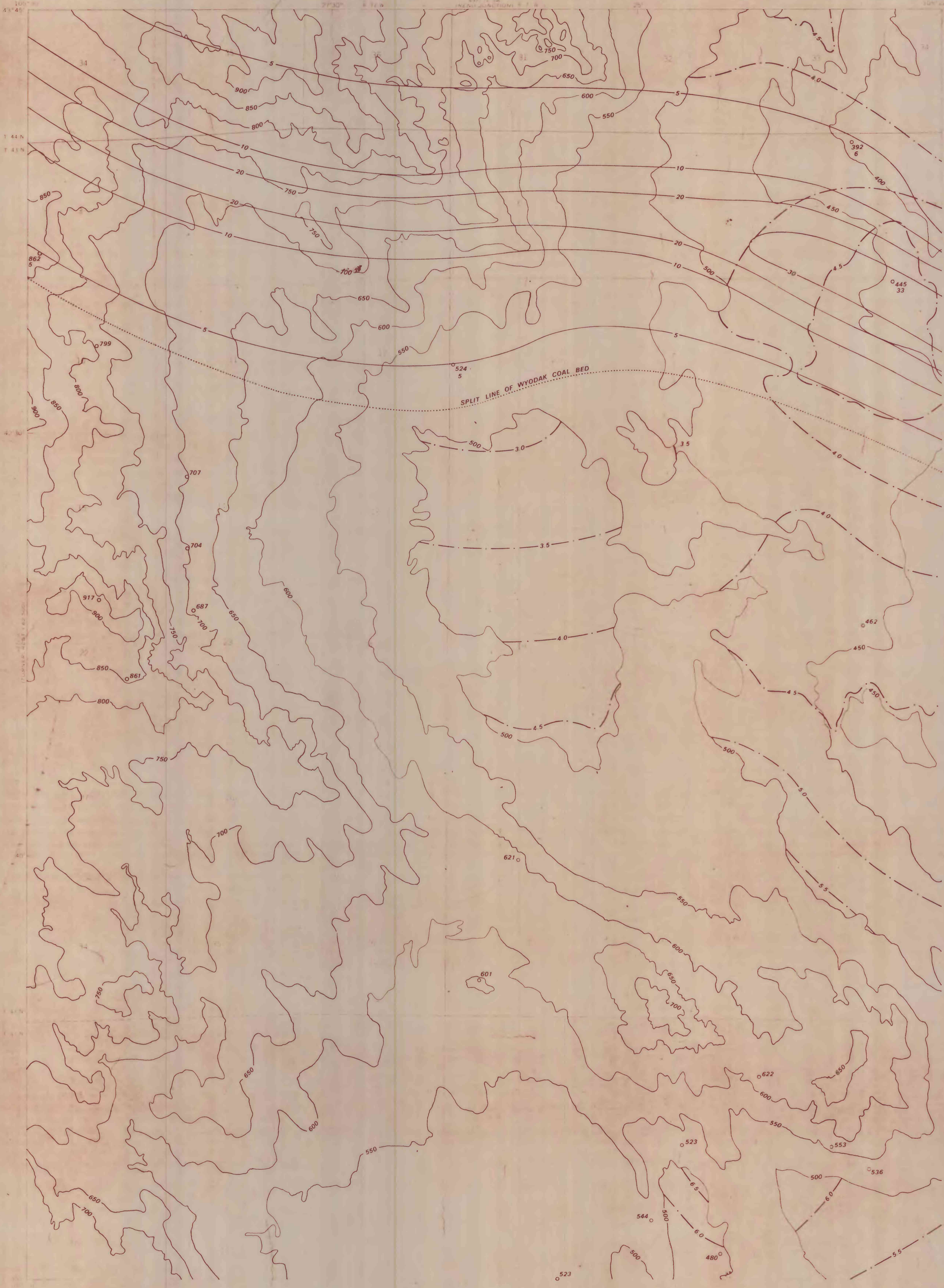


This report has not been edited  
for conformity with U.S. Geological  
Survey editorial standards or  
stratigraphic nomenclature.



**EXPLANATION**

500  
OVERBURDEN ISOPACHS—Showing thickness of overburden, in feet, from the surface to top of the Wyodak or W<sub>1</sub> split of the Wyodak coal bed. Isopach interval 50 feet (15.2 m).

20  
INTERBURDEN ISOPACH—Showing thickness of interburden, in feet, between the W<sub>1</sub> and W<sub>2</sub> splits of the Wyodak coal bed. Isopach intervals 5 and 10 feet (1.5 and 3.0 m).

462  
DRILL HOLE—Showing thickness of overburden, in feet, from the surface to top of the Wyodak coal bed.

392  
DRILL HOLE—Showing thickness of overburden, in feet, from the surface to top of the Wyodak coal bed, and thickness of interburden, in feet, between the W<sub>1</sub> and W<sub>2</sub> splits of the Wyodak coal bed.

50  
MINING-RATIO CONTOUR FOR WYODAK COAL BED—Number indicates cubic yards of overburden per ton of recoverable coal by surface-mining methods. Contours shown only in areas suitable for surface mining within the stripping limit.

To convert feet to meters multiply feet by 0.3048.

Base from U.S. Geological Survey, 1971

Compiled in 1976

**COAL RESOURCE OCCURRENCE MAP OF THE LITTLE THUNDER RESERVOIR  
QUADRANGLE, CAMPBELL COUNTY, WYOMING**

**BY  
G. C. MARTIN  
1977**