

Figure 8.--DRILL-HOLE NO. RS-6-S

Gamma-gamma log

NUCLEAR LOG

U.S. GEOLOGICAL SURVEY, WATER RESOURCES DIVISION

TYPE Gamma-Gamma DATE: 7-11-76

District or Project: \_\_\_\_\_

LOCATION: State Wyo County Sublette Town \_\_\_\_\_

FILE LOCATION NO.: \_\_\_\_\_

LOGGING INFORMATION

WELL INFORMATION

Operator(s) U.S.G.S., N. Callahan  
 Equipment Address: U.S. Geol. Survey, Colorado  
 Logger type: Well no. on log \_\_\_\_\_ No. \_\_\_\_\_  
 Tool type: \_\_\_\_\_  
 Detector type: scintillation  
 Source type: Co-60  
 Source size: \_\_\_\_\_ C; \_\_\_\_\_ MC  
 Source spacing: 10" spacer  
 Tool length, cable head to detector 10.0 ft in  
 Calibration: see log cps  
 Logging speed: 15 ft/min up down  
 Log vert. scale: 20 ft/in

Well No. (USGS): \_\_\_\_\_  
 Other: RS-6-S  
 Map or Quad \_\_\_\_\_  
 Site description \_\_\_\_\_  
 Agency or Owner: US  
 Address: \_\_\_\_\_  
 Altitude of L.S.: \_\_\_\_\_  
 Log H.P.: LS Log depth 373'  
 Btm log interval: \_\_\_\_\_ ft Well TD: 373 ft  
 Top log interval: \_\_\_\_\_ ft  
 Type of finish: \_\_\_\_\_  
 Casing: Elev. of top \_\_\_\_\_ ft/in Above Below L.S.

MODULE SETTINGS

Scale switch (rate or counts): 0-500 cps chart div (or) 0-1K API full scale (circle as applicable)  
 T. C. switch: 4 sec.  
 Position Pot. (Base, zero, or suppression): 98, 875 Dial Div.  
 Sensitivity Pot. (Span): 21 E 40 Dial Div.  
 Discrimination Pot.: 40 Dial Div.  
 Input pulse: 12 volts; Polarity Neg  
 Output switch: normal, reverse  
 Actual scale: \_\_\_\_\_ cps chart div (or) \_\_\_\_\_ API full scale (circle as applicable)

L.D. \_\_\_\_\_, from \_\_\_\_\_ to \_\_\_\_\_, type \_\_\_\_\_  
 L.D. \_\_\_\_\_, from \_\_\_\_\_ to \_\_\_\_\_, type \_\_\_\_\_  
 L.D. \_\_\_\_\_, from \_\_\_\_\_ to \_\_\_\_\_, type \_\_\_\_\_  
 Cement: from \_\_\_\_\_ to \_\_\_\_\_  
 Perf. interval(s) from \_\_\_\_\_ to \_\_\_\_\_, type \_\_\_\_\_  
 Open hole diameter: \_\_\_\_\_ from \_\_\_\_\_ to \_\_\_\_\_  
 Fluid level: 50 ft/in Above At Below L.S., Top Csg

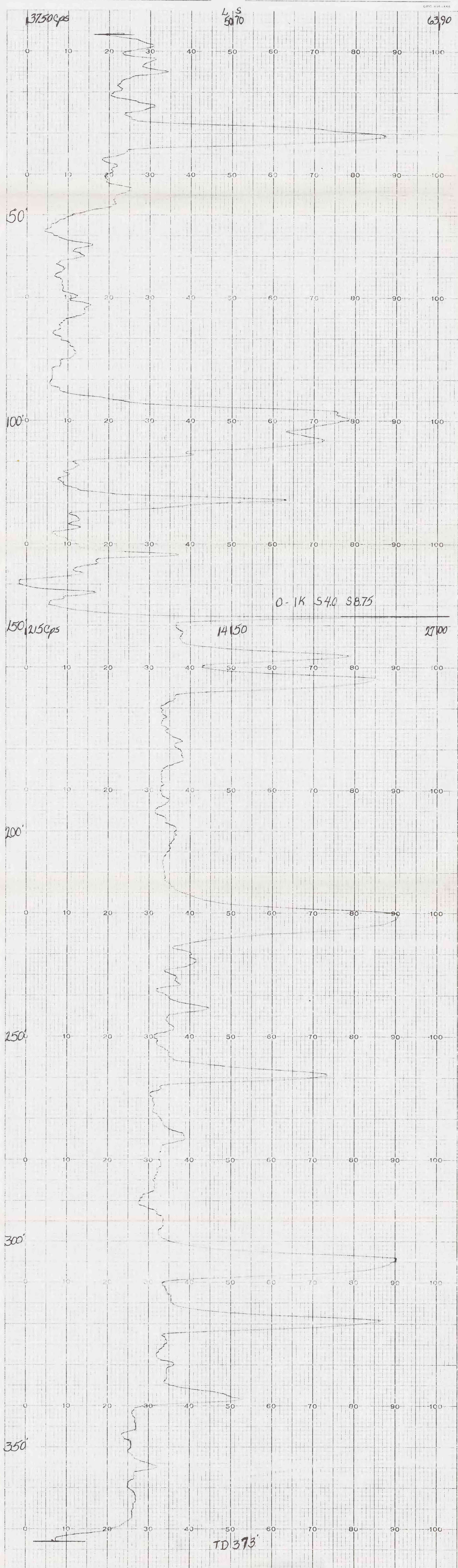
RECORDER SETTINGS

Position Pot.: \_\_\_\_\_ Ch 1 \_\_\_\_\_ Ch 2 \_\_\_\_\_ Ch 3 \_\_\_\_\_  
 Sensitivity Pot.: \_\_\_\_\_  
 Run No. \_\_\_\_\_ of \_\_\_\_\_  
 Remarks: \_\_\_\_\_

Fluid type: WTR ohm-m temp \_\_\_\_\_ °F, °C  
 Fluid resist.: \_\_\_\_\_  
 Driller: Boys Tender  
 Address: Big Beaver Co  
 Type of rig: Rotary (air-drill)  
 Date started: \_\_\_\_\_ completed 7-11-76  
 Aquifer or formation: \_\_\_\_\_

NOTE: This log is not to be used to fulfill private contractual obligations.

Other data and logs available for this well: \_\_\_\_\_



GPR 115-1155  
 U.S. GEOLOGICAL SURVEY, WATER RESOURCES DIVISION  
 WASHINGTON, D.C. 20540  
 1977