

Figure 10.--DRILL-HOLE NO. RS-9-S

Caliper log

CALIPER LOG

TYPE: 3-Arm DATE: JUL 26 1976  
LOCATION: State Wyo County Sweetwater Town \_\_\_\_\_

U.S. GEOLOGICAL SURVEY, WATER RESOURCES DIVISION  
District (or Project): \_\_\_\_\_  
FILE LOCATION NO.: \_\_\_\_\_

LOGGING INFORMATION

Operator(s) U.S.G.S., McCullough  
Equipment address: DFC, Denver, Colorado  
Logger type: Well Reconnaissance No. V-230235  
Tool type: do.  
Tool length, cables and measuring point: 75 ft, \_\_\_\_\_ in  
Calibration: See log  
Logging speed: 20 ft/min  
Log vert. scale: 10 ft/in  
Arm length: 6 inches

WELL INFORMATION

Well No. (USGS): \_\_\_\_\_  
Other: RS 9 S  
Map or Quad \_\_\_\_\_  
Site description T20N R10W Sec 5 NE  
Agency or Owner: US  
Address: \_\_\_\_\_  
Altitude of L.S. 6870  
Log M.P. LS Log depth 38  
Btm log interval: \_\_\_\_\_ ft Well ID: 390 ft.  
Type of finish: \_\_\_\_\_  
Casing: Elev. of top \_\_\_\_\_ ft/in Above \_\_\_\_\_ L.S.  
I.D. \_\_\_\_\_ from \_\_\_\_\_ to \_\_\_\_\_ type \_\_\_\_\_  
I.D. \_\_\_\_\_ from \_\_\_\_\_ to \_\_\_\_\_ type \_\_\_\_\_  
I.D. \_\_\_\_\_ from \_\_\_\_\_ to \_\_\_\_\_ type \_\_\_\_\_  
Cement: from \_\_\_\_\_ to \_\_\_\_\_  
Perf. interval(s) from \_\_\_\_\_ to \_\_\_\_\_ type \_\_\_\_\_  
Open hole diameter: from \_\_\_\_\_ to \_\_\_\_\_  
Fluid level: 231 Ft/in Above \_\_\_\_\_  
At \_\_\_\_\_ L.S., Top Csg  
Below \_\_\_\_\_  
Fluid type: WTB; temp. \_\_\_\_\_ °F, °C  
Fluid resist. \_\_\_\_\_ ohm-m  
Driller: USGS  
Address: DFC, Denver, CO  
Type of rig: See log (see well)  
Date started: 7/25 completed 7/26/76  
Aquifer or formation: \_\_\_\_\_

MODULE SETTINGS  
Scale (Range): 1/1 inches/chart div.  
Position Pot. (Base, zero or suppression): 093 Dial div.  
Sensitivity Pot. (Span): 500 Dial div.

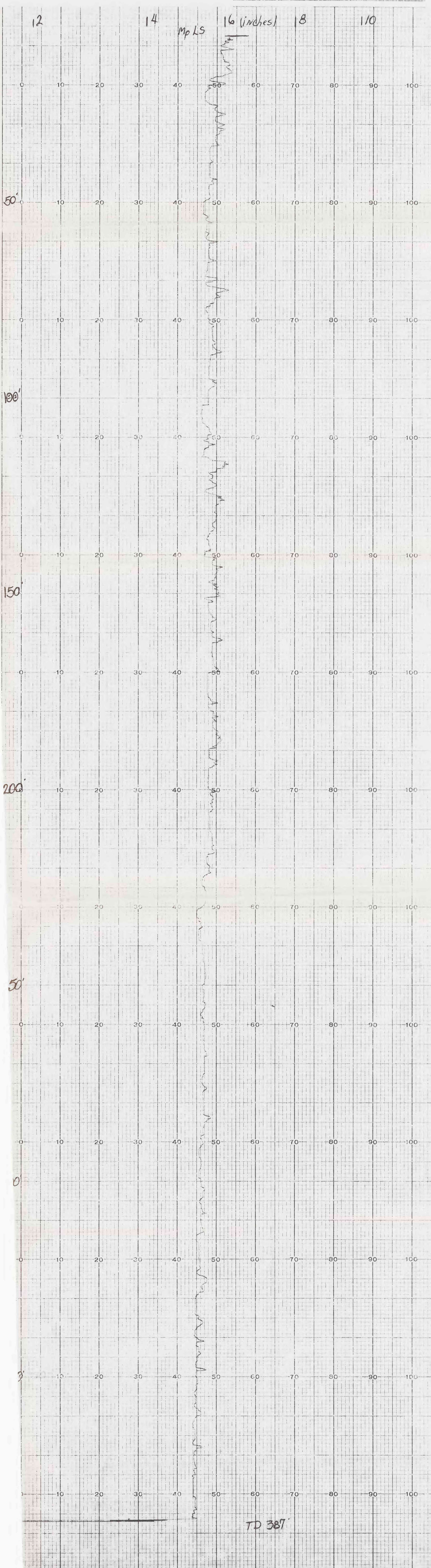
RECORDER SETTINGS

Position: Ch 1 Ch 2 Ch 3  
Sensitivity: \_\_\_\_\_  
Run No. \_\_\_\_\_ of \_\_\_\_\_

Remarks: \_\_\_\_\_  
\_\_\_\_\_  
\_\_\_\_\_

NOTE: This log is not to be used to fulfill private contractual obligations.

Other data and logs available for this well: \_\_\_\_\_



U.S. GEOLOGICAL SURVEY, WATER RESOURCES DIVISION, PHILADELPHIA, PA. PRINTED IN U.S.A.