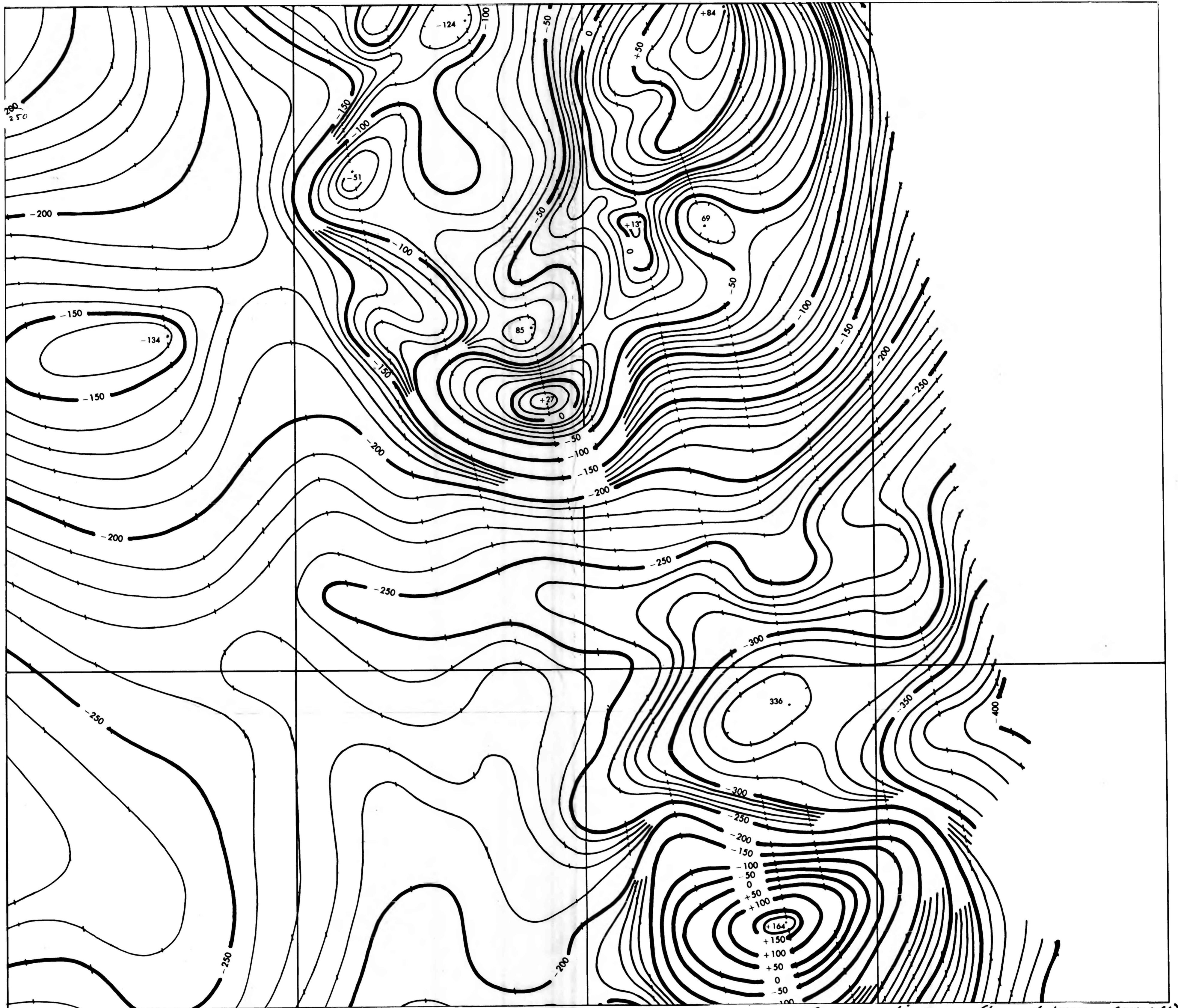


33°00'

32°50'

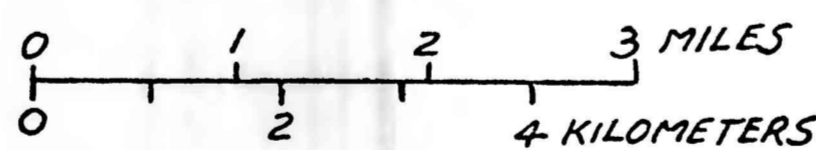
(200)
 R29σ
 no. 77-258

32°45'



Base map from U.S. Naval Oceanographic Office, Washington, D.C.
 Lambert Conformal Conic Projection

SCALE 1:62,500



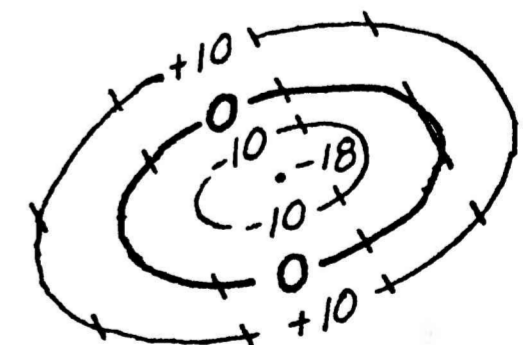
Aeromagnetic survey flown at 1,737 m (5,700 ft)
 average barometric elevation in 1975
 Compiled by U.S. Naval Oceanographic Office,
 Washington, D.C., 1976

FIGURE 6.--AEROMAGNETIC MAP OF HOLLOMAN AND PART OF ALAMOGORDO 15-MINUTE QUADRANGLES, NEW MEXICO

1977

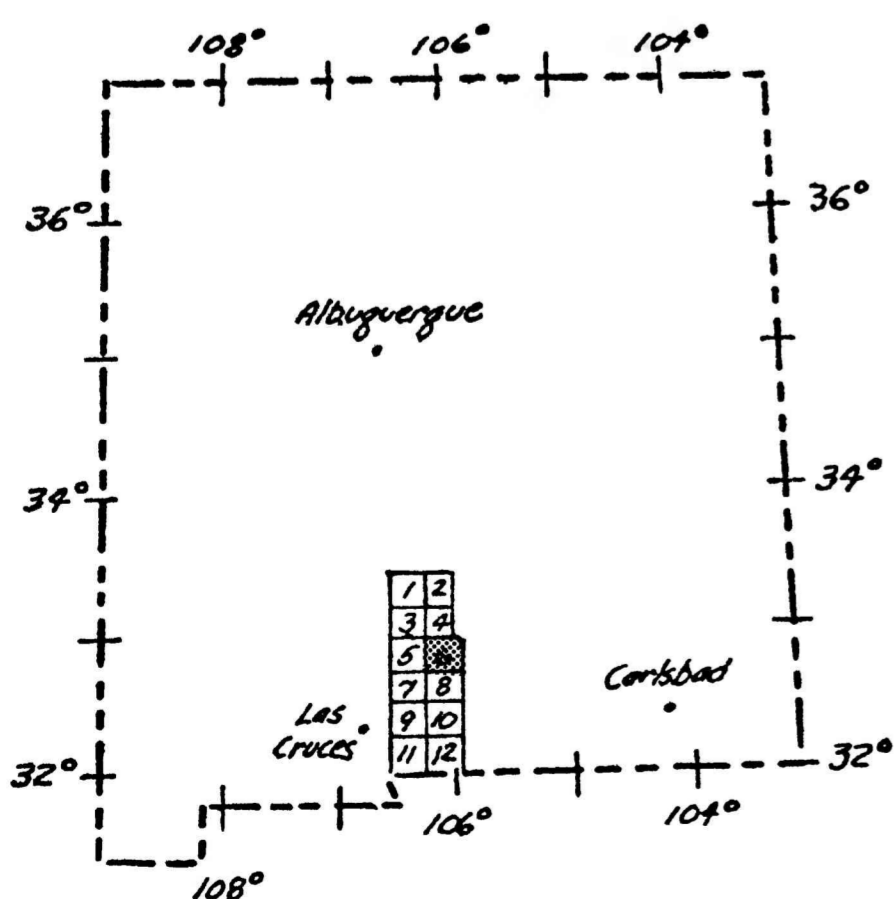
This map is preliminary and has not been edited or reviewed for conformity to Geological Survey standards

EXPLANATION

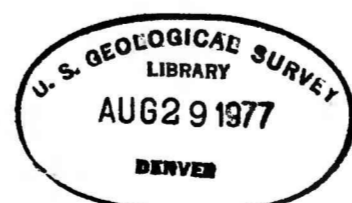


Magnetic contours

Showing residual magnetic anomalies in total magnetic intensity relative to the reference field of the World Chart of the Earth's Magnetic Field published by the Defense Mapping Agency, Washington, D.C. Hashured to indicate areas of lower magnetic intensity. Contour intervals are 10, 50, and 100 gammas
 Flight paths are indicated by ticks on magnetic contours along the path
 Location of magnetic high or low value along flight path is indicated by a dot



Index map of New Mexico showing areas of twelve aeromagnetic maps of the Tularosa valley area. Area of this map is shaded



PLEASE REPLACE IN POCKET
 ON BACK OF BOUND VOLUME