

USBM-01

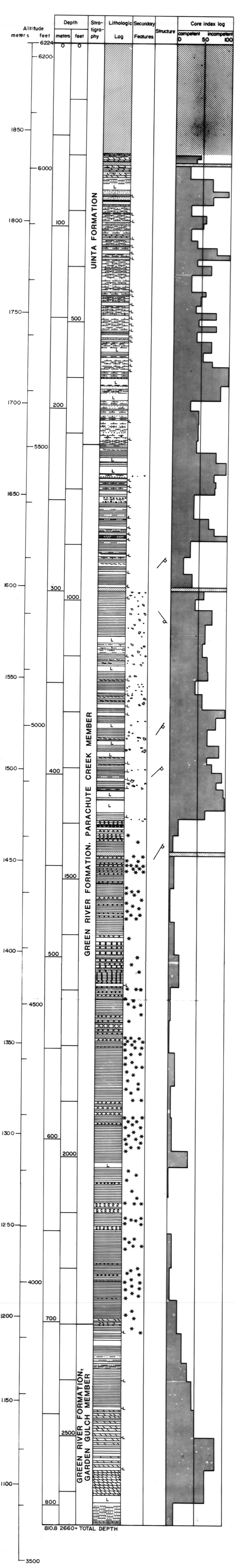
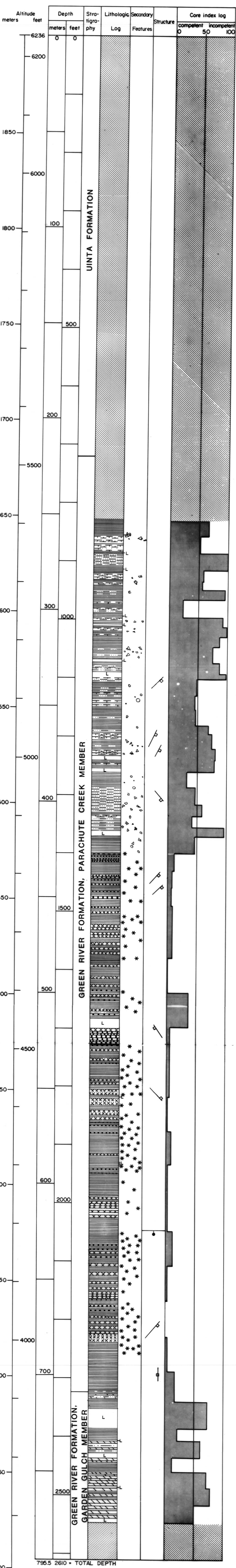
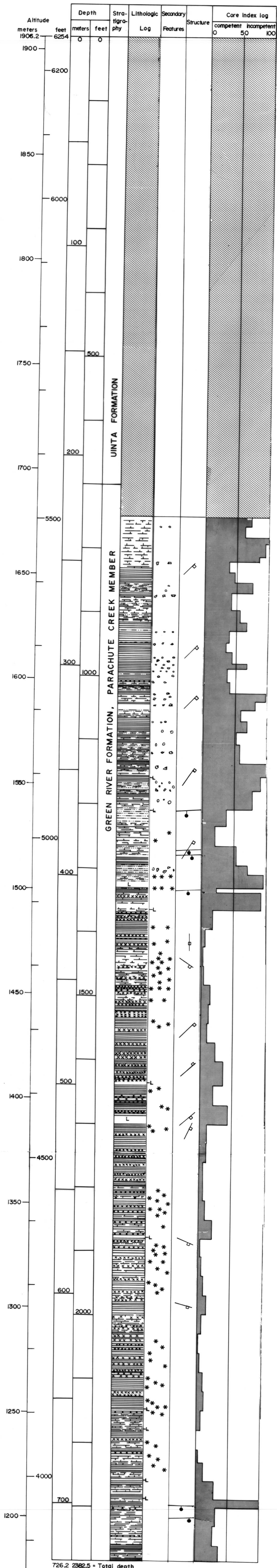
LOCATION: SW 1/4, SE 1/4, Section 31, T. 1 S., R. 97 W.
Rio Blanco County, Colorado
ALTITUDE: 6254 feet (1906.2 meters)
DATES DRILLED: October 5, 1975 - October 27, 1975
LOGGED BY: S.S. Terry, and R.P. Snyder

USBM-01A

LOCATION: NW 1/4, SW 1/4, Section 29, T. 1 S., R. 97 W.
Rio Blanco County, Colorado
ALTITUDE: 6236 feet (1900.7 meters)
DATES DRILLED: November 7, 1975 - November 22, 1975
LOGGED BY: R.P. Snyder, S.S. Terry, and E. F. Czyzewski

USBM-02A

LOCATION: NW 1/4, SW 1/4, Section 29, T. 1 S., R. 97 W.
Rio Blanco County, Colorado
ALTITUDE: 6224 feet (1897.1 meters)
DATES DRILLED: December 8, 1975 - January 24, 1976
LOGGED BY: S.S. Terry, R.P. Snyder, E. F. Czyzewski



- Explanation of symbols appearing on lithologic logs.
- SANDSTONE
 - SILTSTONE
 - OIL SHALE
 - MARLSTONE, INCLUDING SOME OIL SHALES
 - SHALE
 - TUFF
 - BEDDED NAHCOLITE
 - HALITE
 - CORE LOSS INTERVALS
 - INTERVAL DRILLED WITH ROCK BIT
 - NAHCOLITE AS NODULES, PODS, STRINGERS, OR CRYSTALS
 - VUGS
 - COLLAPSE BRECCIA
 - FOSSILIFEROUS
 - FAULT—Showing dip. Bar and ball on downthrown side
 - JOINT—Showing direction of dip. Dip of joints is generalized as core was not oriented

Figure 3.—Graph showing lithology, structure, and core index of drill holes USBM-01, -01A, and -02A.