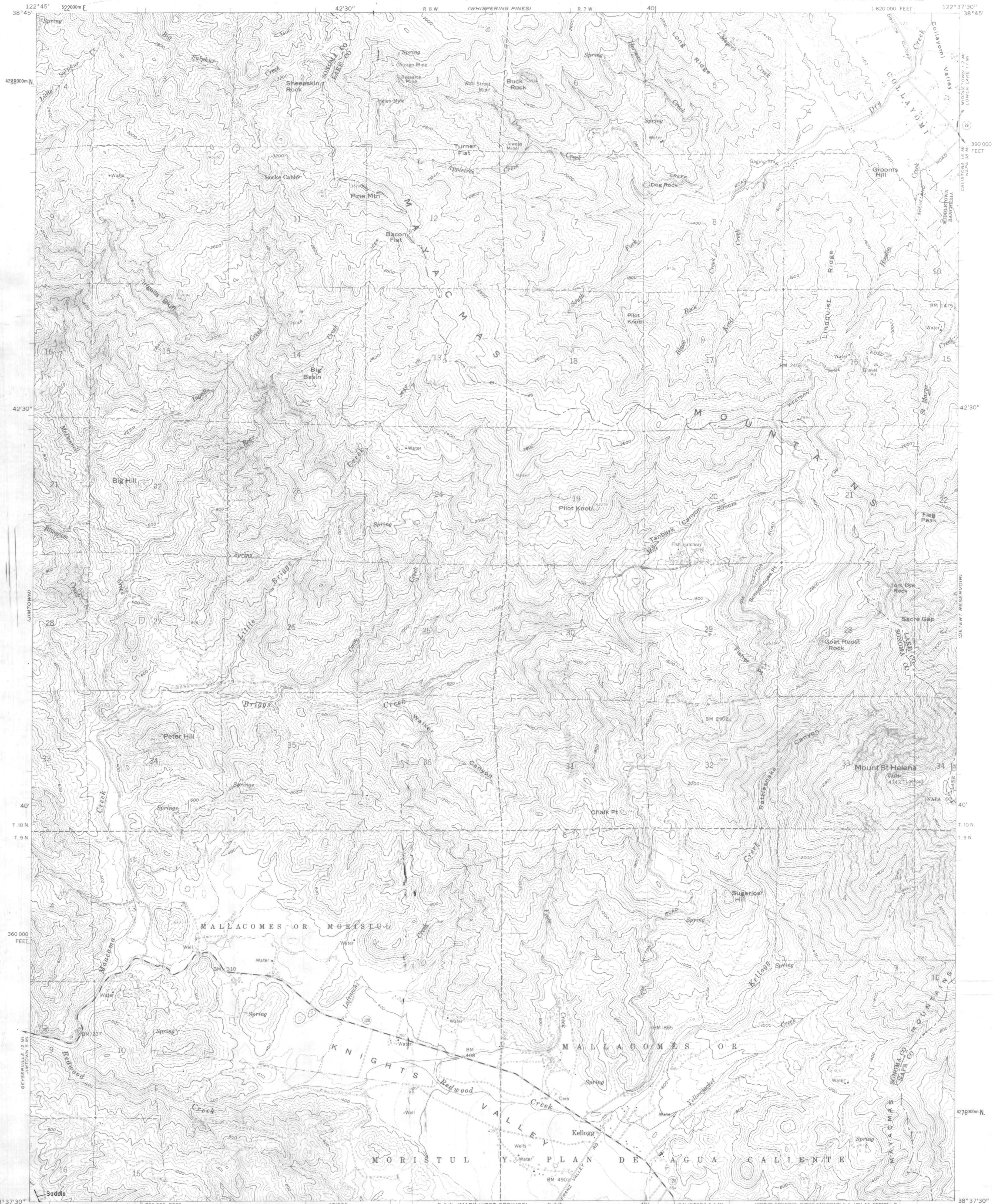
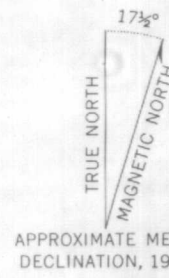
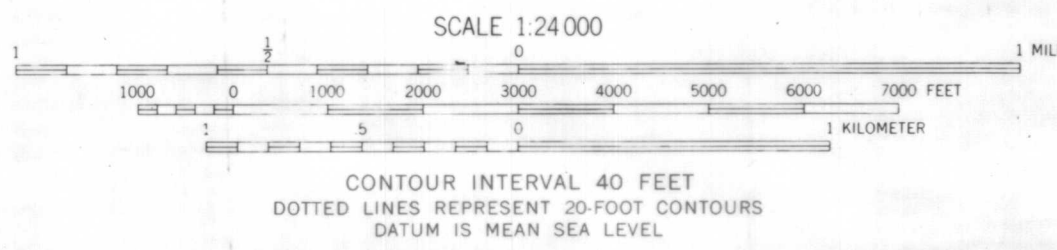


UNITED STATES  
DEPARTMENT OF THE INTERIOR  
GEOLOGICAL SURVEY

STATE OF CALIFORNIA  
EDMUND G. BROWN, GOVERNOR  
HARVEY O. BANKS, DIRECTOR OF WATER RESOURCES



Mapped, edited, and published by the Geological Survey  
Control by USGS and USC&GS  
Topography from aerial photographs by photogrammetric methods  
Aerial photographs taken 1957. Advance field check 1959  
Polyconic projection. 1927 North American datum  
10,000-foot grid based on California coordinate system, zone 2  
1000-meter Universal Transverse Mercator grid ticks,  
zone 10, shown in blue  
Dashed land lines indicate approximate locations



ROAD CLASSIFICATION  
Medium-duty ——— Light-duty ———  
Unimproved dirt - - - - -  
State Route ○

MOUNT ST. HELENA, CALIF.  
NW 4 CALISTOGA 15 QUADRANGLE  
N3837.5—W12237.5/7.5

1959  
This report is preliminary and has  
not been edited or reviewed for  
conformity with Geological Survey  
standards and nomenclature

EXPLANATION

FAULT—Dashed where  
approximately  
located; dotted  
where concealed

LANDSLIDE—Shown only  
where crossed by  
or concealing fault.  
Arrows show direc-  
tion of movement

MAP OF QUATERNARY FAULTING ALONG THE SOUTHERN MAACAMA FAULT ZONE, CALIFORNIA

BY

BY DARRELL C. HERD, EDWARD J. HELLEY, AND BRUCE W. ROGERS

1977

M(246)276  
R 2/23/77  
Sheet 5 of 7

