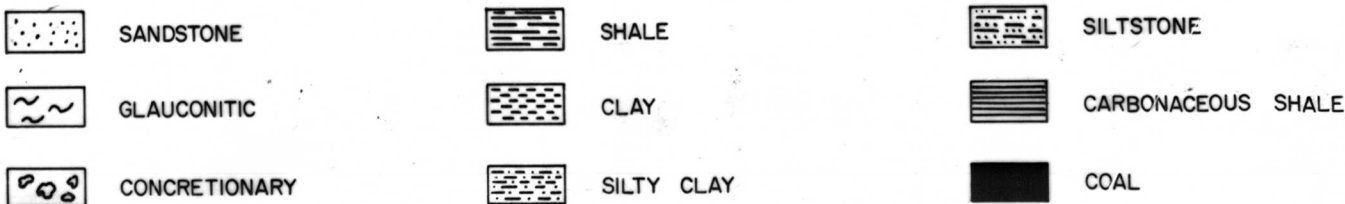
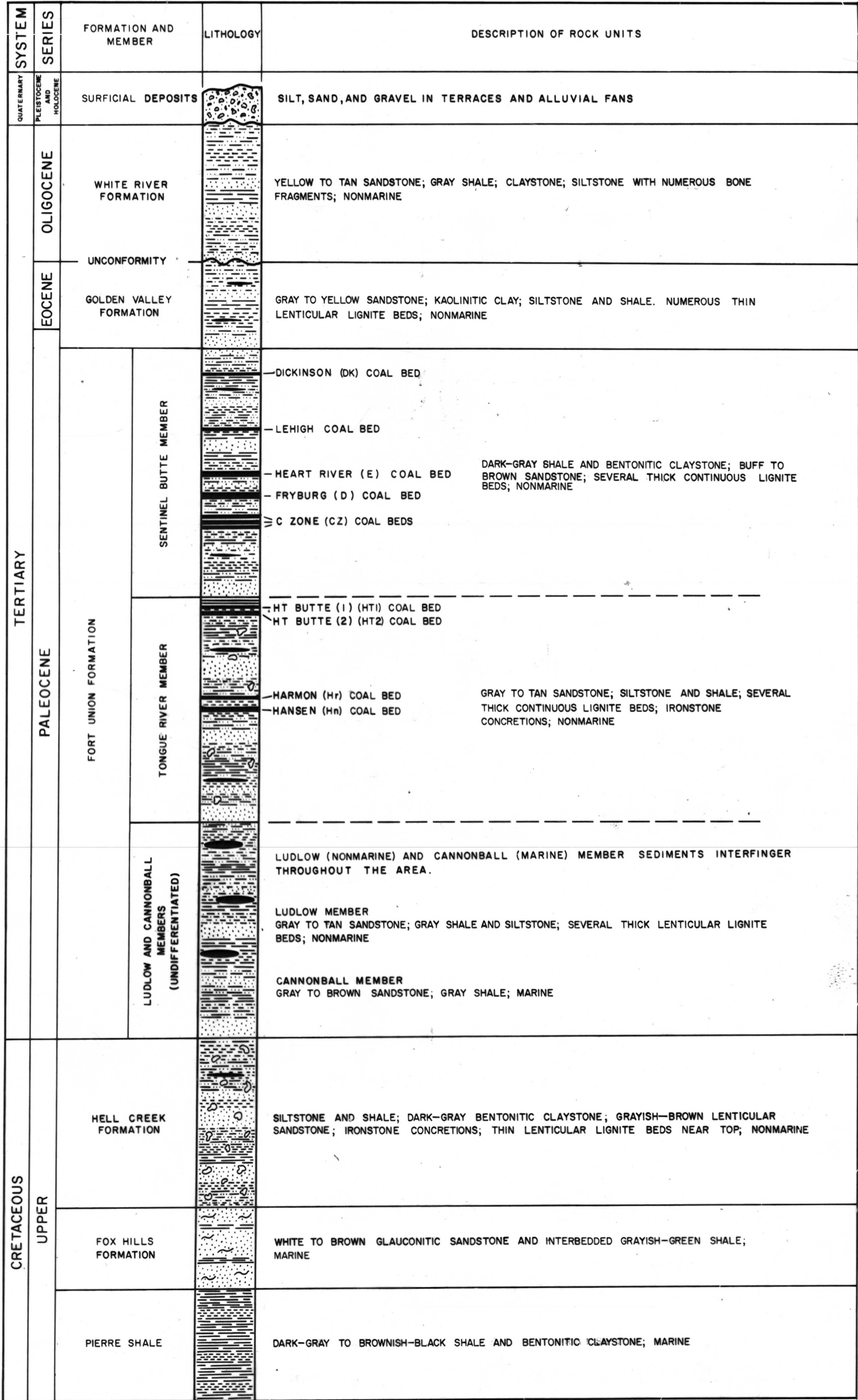


GENERALIZED COLUMNAR SECTION  
DICKINSON AREA  
BILLINGS, DUNN, AND STARK COUNTIES, NORTH DAKOTA

(VERTICAL SCALE 1 in. = 200 ft. ; 1 cm. = 24 m.)



THIS REPORT HAS NOT BEEN EDITED  
FOR CONFORMITY WITH GEOLOGICAL  
SURVEY EDITORIAL STANDARDS OR  
STRATIGRAPHIC NOMENCLATURE.