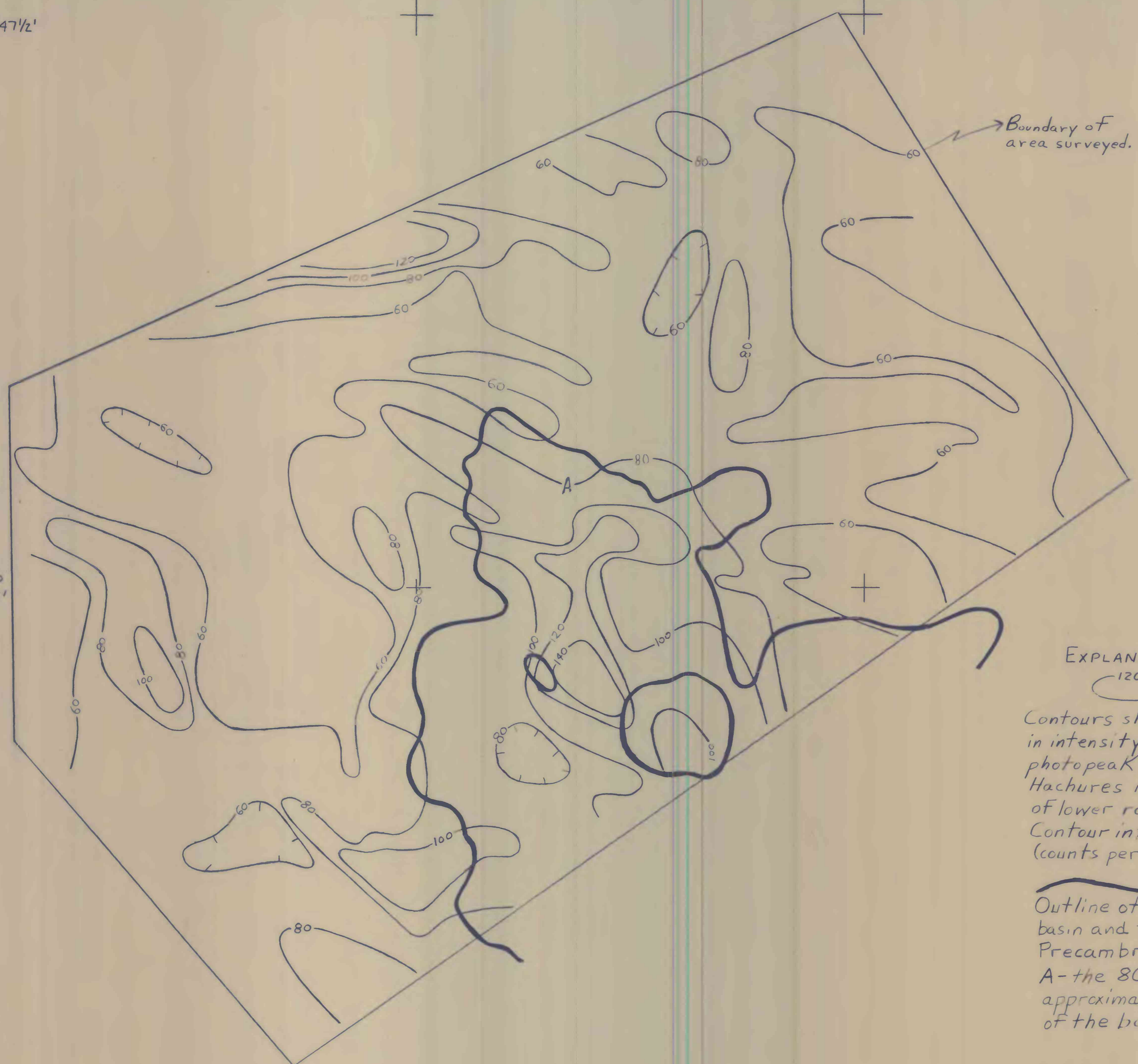


38° 47 1/2'

+

+

+



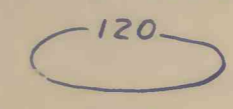
Boundary of area surveyed.

38° 45'

+

+

EXPLANATION



Contours show variations in intensity of potassium-40 photopeak (1.46 MeV).
 Hachures indicate areas of lower radioactivity.
 Contour interval 20 cps (counts per second).

Outline of volcanic subsidence basin and two islands of Precambrian rock.
 A - the 80-cps contour that approximates the border of the basin.

105° 12 1/2'
38° 42 1/2'

105° 10'

105° 7 1/2'

105° 5'

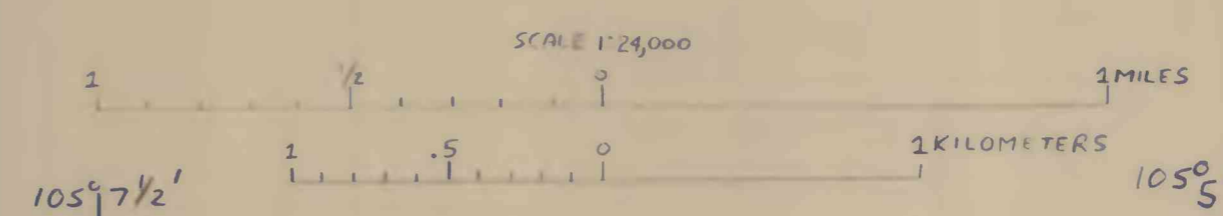


Plate II. Contour map of potassium distribution in part of the Cripple Creek district, Colorado.