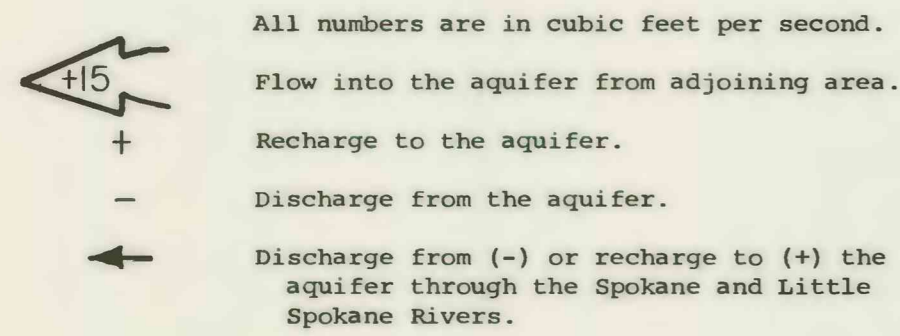


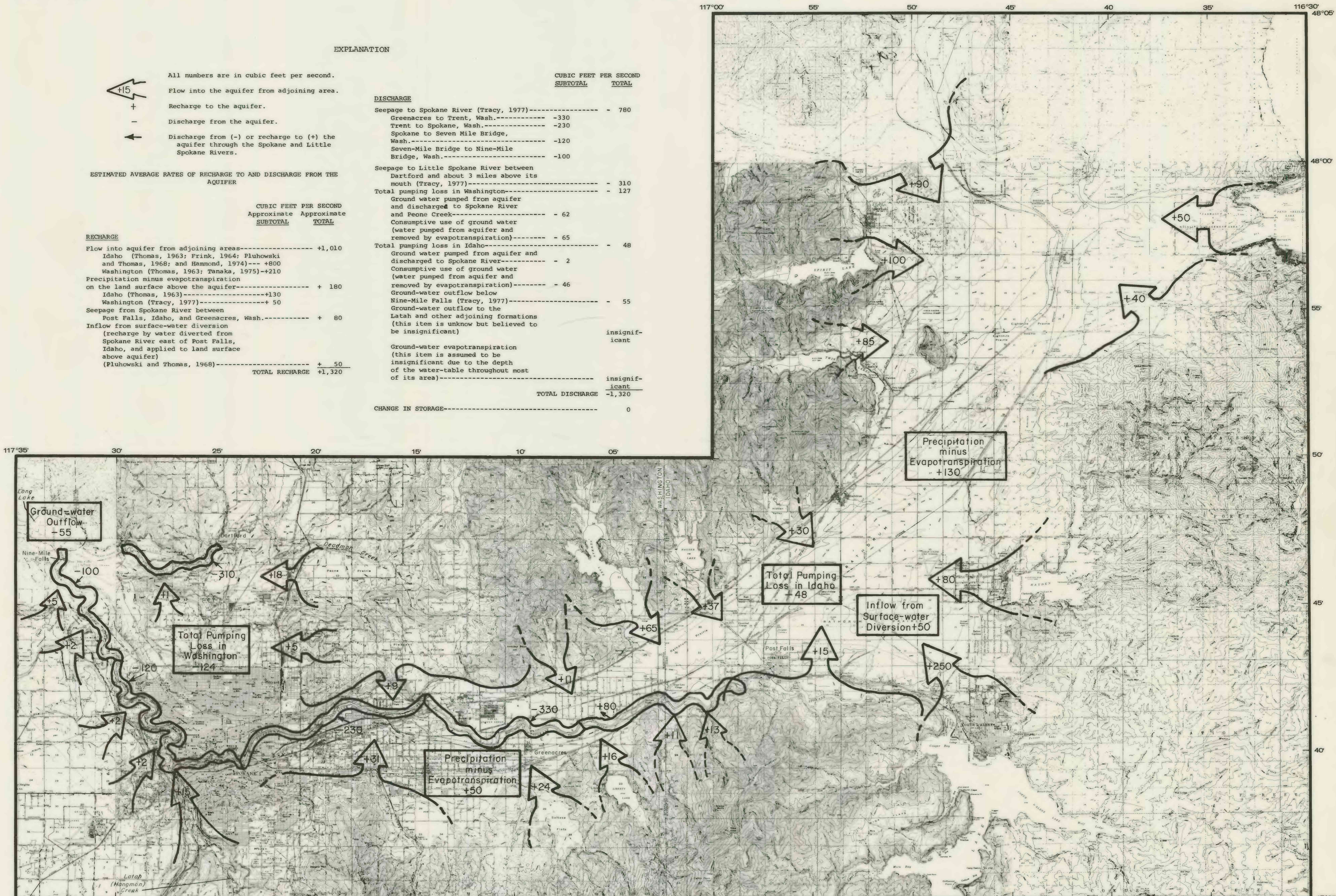
EXPLANATION



ESTIMATED AVERAGE RATES OF RECHARGE TO AND DISCHARGE FROM THE AQUIFER

	CUBIC FEET PER SECOND	
	Approximate SUBTOTAL	Approximate TOTAL
RECHARGE		
Flow into aquifer from adjoining areas	+1,010	
Idaho (Thomas, 1963; Frink, 1964; Pluhowski and Thomas, 1968; and Hammond, 1974)---	+800	
Washington (Thomas, 1963; Tanaka, 1975)---	+210	
Precipitation minus evapotranspiration on the land surface above the aquifer	+180	
Idaho (Thomas, 1963)-----	+130	
Washington (Tracy, 1977)-----	+50	
Seepage from Spokane River between Post Falls, Idaho, and Greenacres, Wash.	+80	
Inflow from surface-water diversion (recharge by water diverted from Spokane River east of Post Falls, Idaho, and applied to land surface above aquifer) (Pluhowski and Thomas, 1968)-----	+50	
TOTAL RECHARGE	+1,320	

	CUBIC FEET PER SECOND	
	SubTOTAL	TOTAL
DISCHARGE		
Seepage to Spokane River (Tracy, 1977)-----	-780	
Greenacres to Trent, Wash.-----	-330	
Trent to Spokane, Wash.-----	-230	
Spokane to Seven Mile Bridge, Wash.-----	-120	
Seven-Mile Bridge to Nine-Mile Bridge, Wash.-----	-100	
Seepage to Little Spokane River between Dartford and about 3 miles above its mouth (Tracy, 1977)-----	-310	
Total pumping loss in Washington -----	-127	
Ground water pumped from aquifer and discharged to Spokane River and Peone Creek-----	-62	
Consumptive use of ground water (water pumped from aquifer and removed by evapotranspiration)-----	-65	
Total pumping loss in Idaho -----	-48	
Ground water pumped from aquifer and discharged to Spokane River-----	-2	
Consumptive use of ground water (water pumped from aquifer and removed by evapotranspiration)-----	-46	
Ground-water outflow below Nine-Mile Falls (Tracy, 1977)-----	-55	
Ground-water outflow to the Latah and other adjoining formations (this item is unknown but believed to be insignificant)	insignificant	
Ground-water evapotranspiration (this item is assumed to be insignificant due to the depth of the water-table throughout most of its area)-----	insignificant	
TOTAL DISCHARGE	-1,320	
CHANGE IN STORAGE -----	0	



Base from U.S. Geological Survey, Blanchard, (40ft.), Edgemere, (20ft.), Careywood, Cocolalla, (40ft.), 1968, Idaho, 1:24,000; Clayton (25ft.), 1950, Deer Park, 1949, Medical Lake, Spokane, 1950, (40ft.), Washington: Mt. Spokane, (50ft.), 1950; Greenacres, (40ft.), 1949, Washington-Idaho; Spirit Lake, Athol, 1961; Coeur D'Alene, 1957, (40ft.); Lane, (80ft.), 1957, Idaho, 1:62,500.

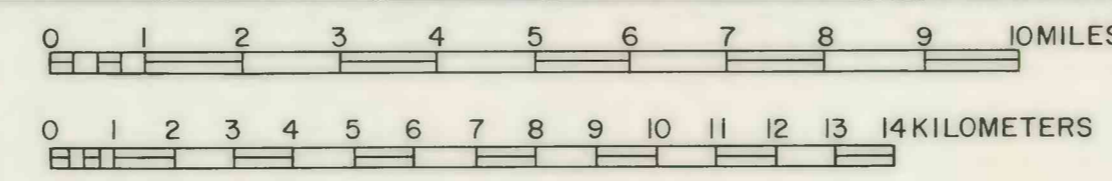


PLATE 4.-- Map of Spokane Valley-Rathdrum Prairie aquifer showing estimated average rates of recharge to and discharge from the aquifer.