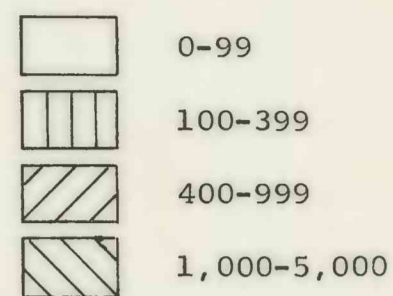


EXPLANATION

Population per square mile

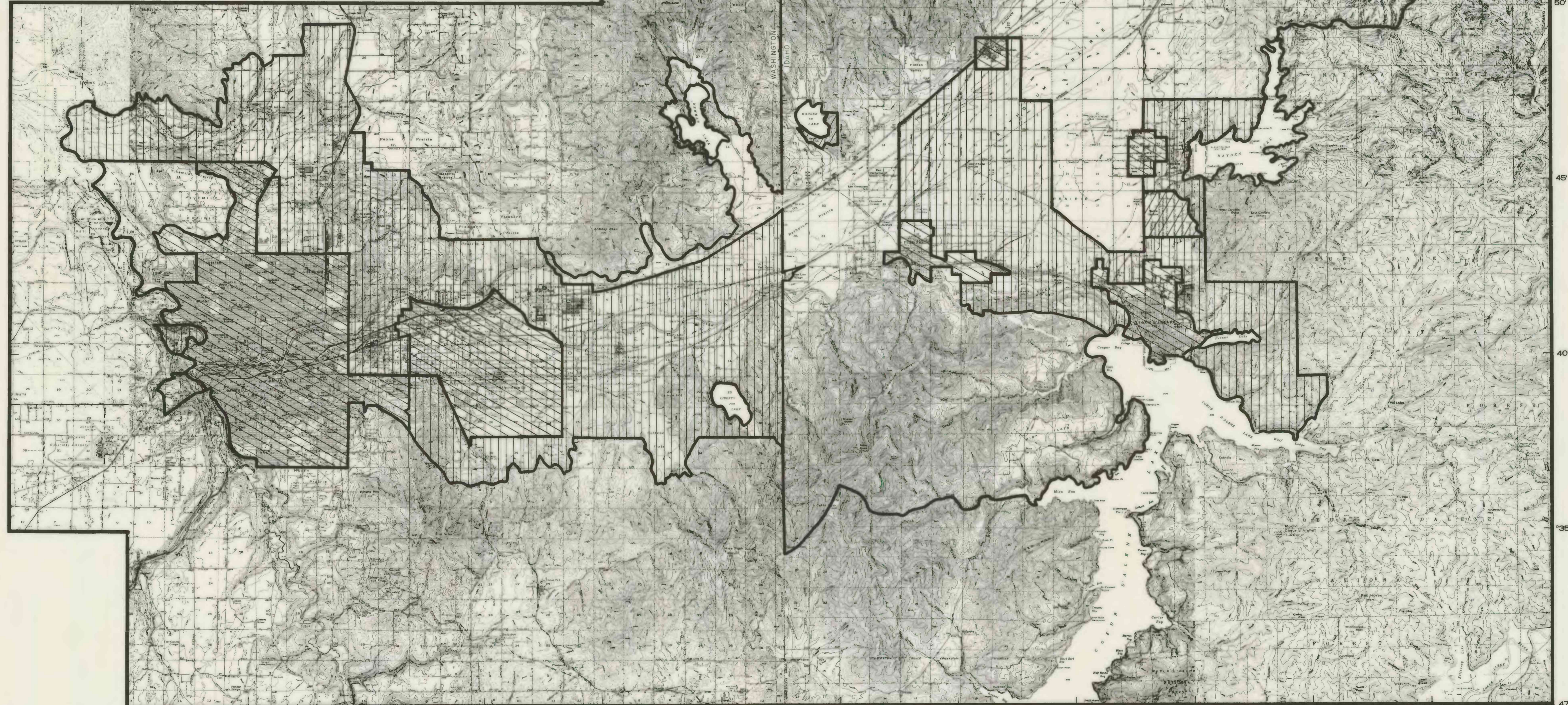


The boundaries of the census-
enumeration districts used to
construct this map do not coincide
with the aquifer boundaries.
Therefore, population distributions
are shown for some areas which extend
beyond the area underlain by the
aquifer.

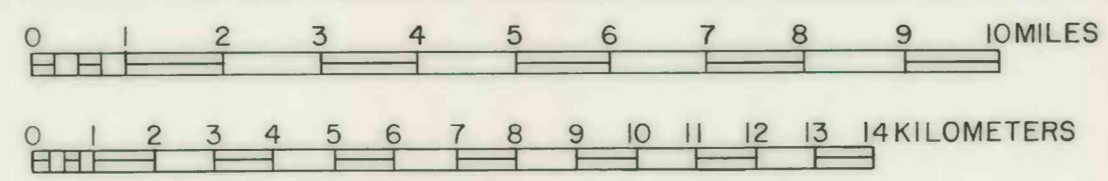
Idaho data from Kootenai County
Planning Commission, 1976.

Washington data from Spokane County
Planning Commission, 1973.

117°35' 30' 25' 20' 15'



Base from U.S. Geological Survey. Blanchard, (40ft),
Edgemere, (20ft), Careywood, Cocolalla, (40ft), 1968,
Idaho, 1:24,000; Clayton (25ft), 1950; Deer Park, 1949;
Medical Lake, Spokane, 1950, (40ft), Washington:
Mt. Spokane, (50ft), 1950; Greenacres, (40ft), 1949,
Washington-Idaho: Spirit Lake, Athol, 1961;
Coeur D'Alene, 1957, (40ft); Lane, (80ft), 1957, Idaho, 1:62,500.



**PLATE 6.-- Map of Spokane Valley-Rathdrum Prairie aquifer
showing population distribution overlying the aquifer.**