

EXPLANATION

Estimated volume of ground water pumped  
from the aquifer in 1976

(millions of gallons per year)

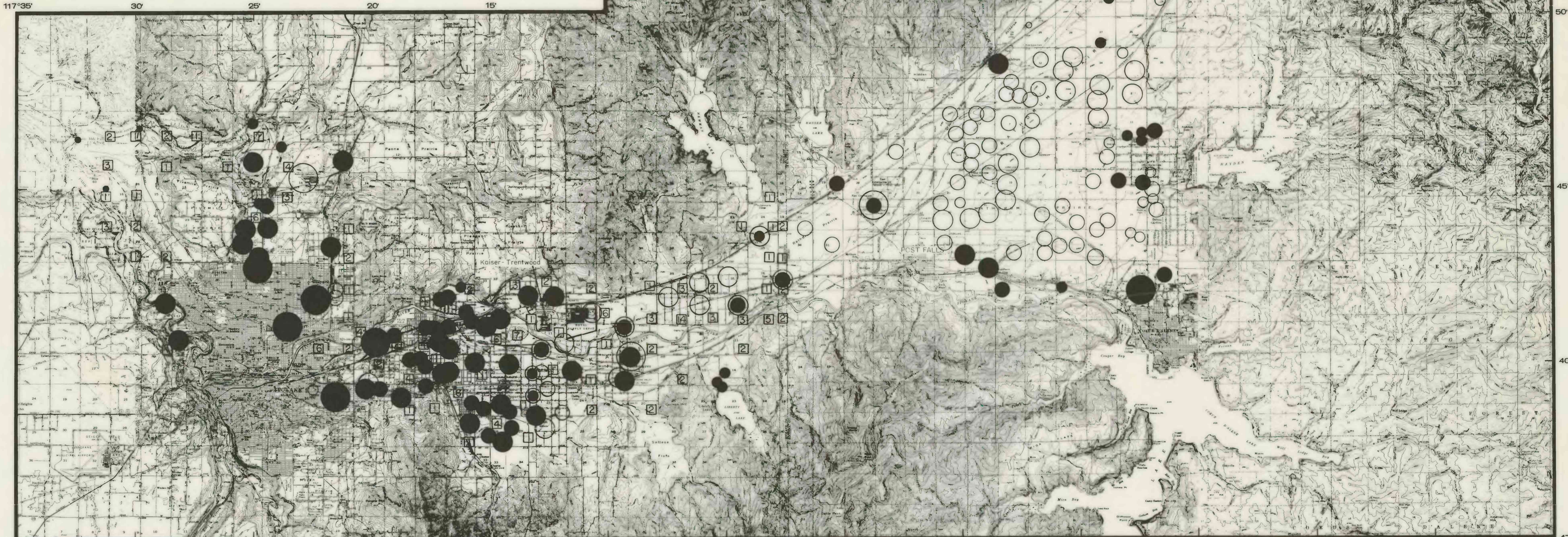
- greater than 1,000
- 100 to 999
- 10 to 99
- 1 to 9
- less than 1

Shaded circles represent water pumped  
for domestic use

Unshaded circles represent water pumped  
for non-domestic use (irrigation, indus-  
trial, and other uses)

② Number of individual domestic wells on file  
with USGS in indicated section in Washington.  
The Idaho part of the aquifer is presently  
being inventoried.

Idaho data are from interviews with managers  
of water-supply systems, 1977, and Washington  
data are modified from U.S. Army Corps of  
Engineers (1976) and U.S. Geological Survey  
files.



Base from U.S. Geological Survey, Blanchard, (40ft),  
Edgemere, (20ft), Careywood, Cocolalla, (40ft), 1968,  
Idaho, 1:24,000; Clayton (25ft), 1950; Deer Park, 1949,  
Medical Lake, Spokane, 1950, (40ft), Washington;  
Mt. Spokane, (50ft), 1950; Greenacres, (40ft), 1949,  
Washington-Idaho; Spirit Lake, Athol, 1961 Coeur D'Alene,  
1957, (40ft); Lane, (80ft), 1957, Idaho, 1:62,500.

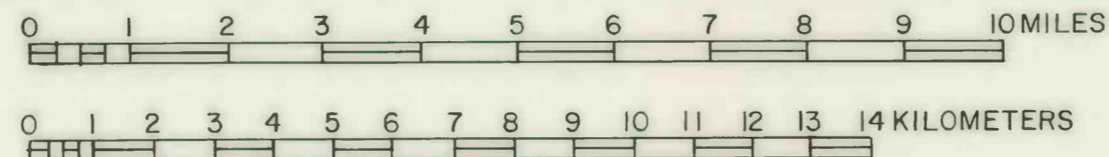


PLATE 8.-- Estimated volumes of water pumped from the aquifer in 1976.