

OPEN-FILE REPORT
This report has not been edited for conformity with U.S. Geological Survey editorial standards or stratigraphic nomenclature.

OPEN FILE REPORT 78-031
PLATE 21 OF 35

EXPLANATION

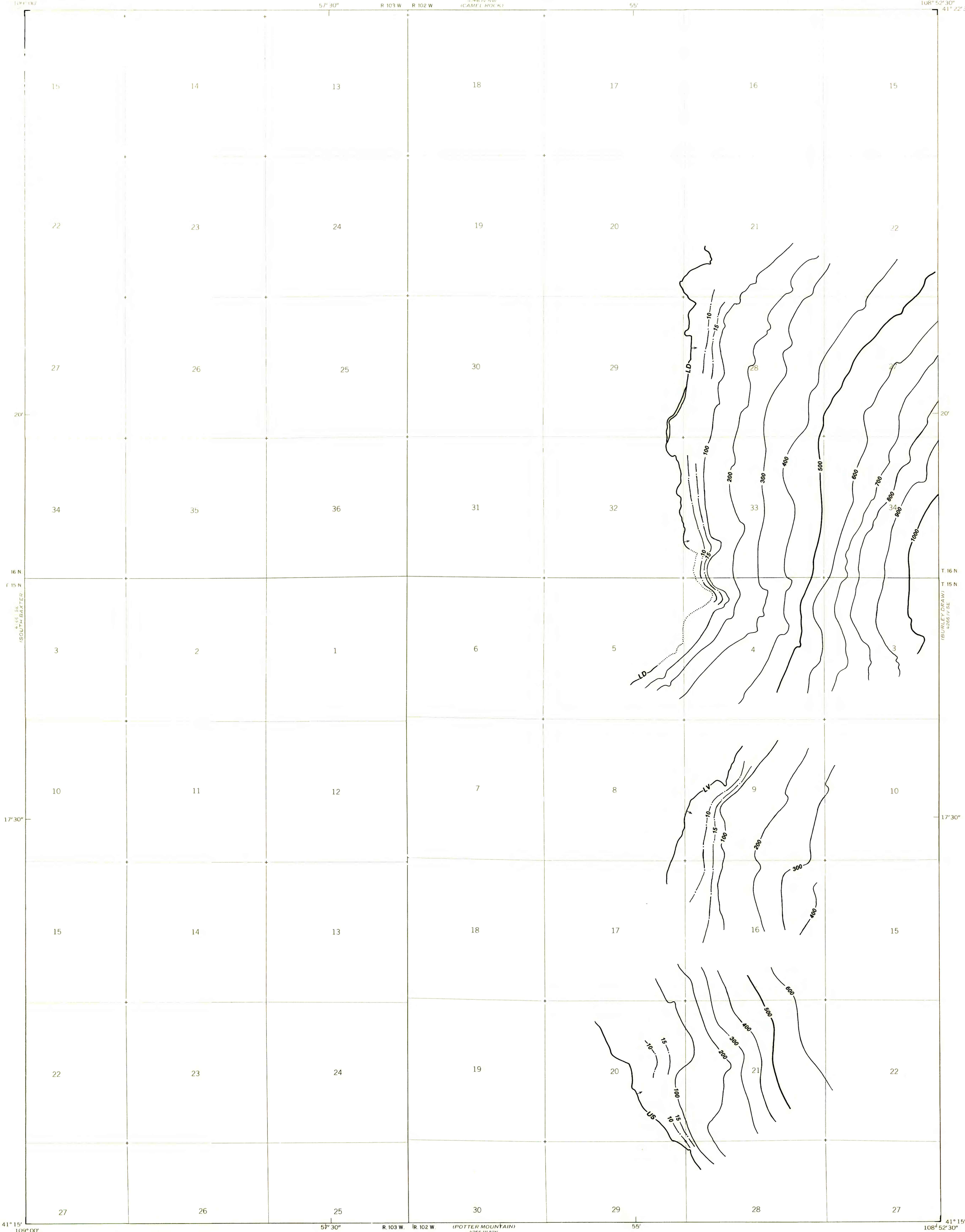
LD ————
TRACE OF COAL BED OUTCROP —
Dotted where concealed. Arrow points to the coal bearing area. Letters designate name of coal bed.

US—Upper Sparrow
LV—Lower Little Valley
LD—Lower Mourning Dove
COAL BED SYMBOLS AND NAMES

OVERBURDEN ISOPACHS — Showing thickness of overburden, in feet, from the surface to the top of the Upper Sparrow (US), Lower Little Valley (LV), and Lower Mourning Dove (LD) coal beds. Isopach interval 100 feet.

MINING RATIO CONTOUR FOR THE UPPER SPARROW (US), LOWER LITTLE VALLEY (LV), AND LOWER MOURNING DOVE (LD) COAL BEDS — Number indicates cubic yards of overburden per ton of recoverable coal by surface mining methods. Contours shown only in areas suitable for surface mining within the stripping limit.

To convert feet to meters,
multiply feet by 0.3048.



Base from U.S. Geological Survey, 1968
Compiled in 1977

UTM GRID AND 1968 MAGNETIC NORTH
DECLINATION AT CENTER OF SHEET

SCALE 1:24,000
0 1000 2000 3000 4000 5000 6000 7000 FEET
0 1 2 3 4 5 KILOMETER

WYOMING
QUADRANGLE LOCATION

COAL RESOURCE OCCURRENCE AND COAL DEVELOPMENT POTENTIAL MAPS OF THE MUD
SPRINGS RANCH QUADRANGLE, SWEETWATER COUNTY, WYOMING
BY
JOSEPH D. SANCHEZ
1978

PLATE 21
OVERBURDEN AND MINING
RATIO MAP OF THE
UPPER SPARROW, LOWER
LITTLE VALLEY, AND
LOWER MOURNING DOVE
COAL BEDS