

OPEN FILE REPORT
This report has not been edited for con-
formity with U.S. Geological Survey editorial
standards or stratigraphic nomencla-
ture.

OPEN FILE REPORT 78-033
PLATE 1 OF 25

EXPLANATION

① — LINE OF MEASURED SECTION—
Showing index number of section on plate 3.

○ — COAL TEST HOLE—Showing drill-hole
data in feet.

③ — OIL AND GAS TEST HOLE—Showing
index number on plate 3 and drill hole data
in feet.

GL—Ground level
NR—No record
R—Rock interval

CBZ—Coal bed and symbol
DRILL-HOLE DATA SYMBOLS

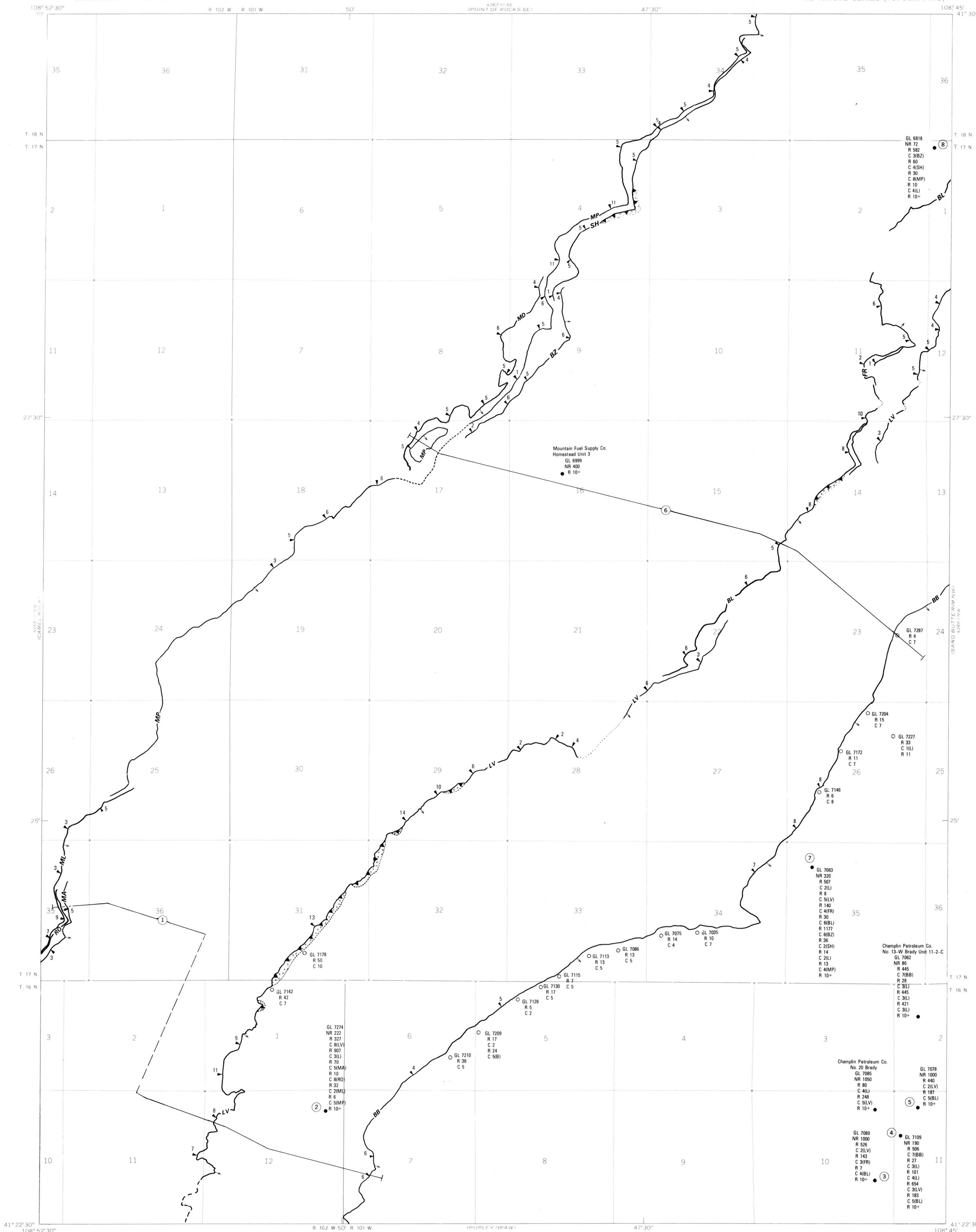
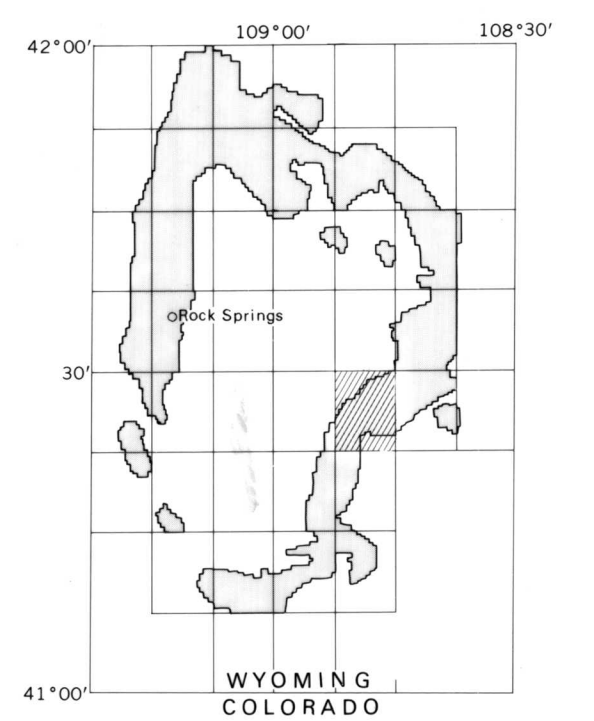
① — OUTCROP OF COAL BED—Dotted where
concealed. Thickness in feet measured at
triangle.

BURNED AND CLINKERED COAL
BED—Showing area of baked and fused
rock. Dotted line indicates inferred limit of
burning.

BB—Big Burn (Nuttall)
LV—Little Valley
FR—French
BL—Bluff
BZ—Bazzard
SH—Shrike
MA—Mallard
RO—Robin
ML—Meadowlark
MP—Magpie
MD—Mourning dove
L—Local coal bed

COAL BED SYMBOLS AND NAMES

To convert feet to meters
multiply feet by 0.3048.



Mountain Fuel Supply Co.
Homestead Unit 3
GL 6989
NR 400
R 10+

Champion Petroleum Co.
No. 13-W Brady Unit 11-2-C
GL 7082
NR 86
R 445
C 7(BB)
R 28
C 3(L)
R 445
R 187
C 3(L)
R 10+

Champion Petroleum Co.
No. 20 Brady
GL 7085
NR 1050
R 80
C 4(L)
R 248
C 5(LV)
R 10+

GL 7078
NR 1000
R 100
R 506
C 2(LV)
R 27
C 3(L)
R 101
C 4(L)
R 654
C 3(LV)
R 183
C 5(BL)
R 10+

GL 7274
NR 222
R 327
C 3(LV)
R 907
R 10
C 5(MA)
R 10
C 3(R)
R 32
C 2(ML)
R 6
C 5(MF)
R 10+

GL 7178
R 50
C 10

GL 7142
R 42
C 7

GL 7209
R 17
C 2
R 24
C 5(B)

GL 7210
R 38
C 5

GL 7128
R 5
C 2

GL 7130
R 17
C 5

GL 7113
R 13
C 5

GL 7086
R 14
C 4

GL 7035
R 10
C 7

GL 7075
R 14
C 4

GL 7063
NR 520
R 507
C 2(L)
R 6
C 5(LV)
R 140
C 4(FR)
R 30
C 6(BL)
R 177
C 8(BZ)
R 36
C 2(SH)
R 14
C 2(L)
R 13
C 4(MP)
R 10+

GL 7287
R 4
C 7

GL 7277
R 33
C 1(L)
R 11

GL 7172
R 11
C 7

GL 7146
R 8
C 6

GL 7083
NR 520
R 507
C 2(L)
R 6
C 5(LV)
R 140
C 4(FR)
R 30
C 6(BL)
R 177
C 8(BZ)
R 36
C 2(SH)
R 14
C 2(L)
R 13
C 4(MP)
R 10+

GL 7078
NR 1000
R 100
R 506
C 2(LV)
R 27
C 3(L)
R 101
C 4(L)
R 654
C 3(LV)
R 183
C 5(BL)
R 10+

GL 7109
NR 100
R 506
C 7(BB)
R 27
C 3(L)
R 101
C 4(L)
R 654
C 3(LV)
R 183
C 5(BL)
R 10+

GL 7089
NR 1000
R 526
C 2(LV)
R 143
C 3(FR)
R 7
C 4(BL)
R 10+

GL 7089
NR 1000
R 526
C 2(LV)
R 143
C 3(FR)
R 7
C 4(BL)
R 10+

GL 7089
NR 1000
R 526
C 2(LV)
R 143
C 3(FR)
R 7
C 4(BL)
R 10+

GL 7089
NR 1000
R 526
C 2(LV)
R 143
C 3(FR)
R 7
C 4(BL)
R 10+

GL 7089
NR 1000
R 526
C 2(LV)
R 143
C 3(FR)
R 7
C 4(BL)
R 10+

GL 7089
NR 1000
R 526
C 2(LV)
R 143
C 3(FR)
R 7
C 4(BL)
R 10+

GL 7089
NR 1000
R 526
C 2(LV)
R 143
C 3(FR)
R 7
C 4(BL)
R 10+

GL 7089
NR 1000
R 526
C 2(LV)
R 143
C 3(FR)
R 7
C 4(BL)
R 10+

GL 7089
NR 1000
R 526
C 2(LV)
R 143
C 3(FR)
R 7
C 4(BL)
R 10+

GL 7089
NR 1000
R 526
C 2(LV)
R 143
C 3(FR)
R 7
C 4(BL)
R 10+

GL 7089
NR 1000
R 526
C 2(LV)
R 143
C 3(FR)
R 7
C 4(BL)
R 10+

GL 7089
NR 1000
R 526
C 2(LV)
R 143
C 3(FR)
R 7
C 4(BL)
R 10+

GL 7089
NR 1000
R 526
C 2(LV)
R 143
C 3(FR)
R 7
C 4(BL)
R 10+

GL 7089
NR 1000
R 526
C 2(LV)
R 143
C 3(FR)
R 7
C 4(BL)
R 10+

GL 7089
NR 1000
R 526
C 2(LV)
R 143
C 3(FR)
R 7
C 4(BL)
R 10+

GL 7089
NR 1000
R 526
C 2(LV)
R 143
C 3(FR)
R 7
C 4(BL)
R 10+

GL 7089
NR 1000
R 526
C 2(LV)
R 143
C 3(FR)
R 7
C 4(BL)
R 10+

GL 7089
NR 1000
R 526
C 2(LV)
R 143
C 3(FR)
R 7
C 4(BL)
R 10+

GL 7089
NR 1000
R 526
C 2(LV)
R 143
C 3(FR)
R 7
C 4(BL)
R 10+

GL 7089
NR 1000
R 526
C 2(LV)
R 143
C 3(FR)
R 7
C 4(BL)
R 10+

GL 7089
NR 1000
R 526
C 2(LV)
R 143
C 3(FR)
R 7
C 4(BL)
R 10+

GL 7089
NR 1000
R 526
C 2(LV)
R 143
C 3(FR)
R 7
C 4(BL)
R 10+

GL 7089
NR 1000
R 526
C 2(LV)
R 143
C 3(FR)
R 7
C 4(BL)
R 10+

GL 7089
NR 1000
R 526
C 2(LV)
R 143
C 3(FR)
R 7
C 4(BL)
R 10+

GL 7089
NR 1000
R 526
C 2(LV)
R 143
C 3(FR)
R 7
C 4(BL)
R 10+

GL 7089
NR 1000
R 526
C 2(LV)
R 143
C 3(FR)
R 7
C 4(BL)
R 10+

GL 7089
NR 1000
R 526
C 2(LV)
R 143
C 3(FR)
R 7
C 4(BL)
R 10+

GL 7089
NR 1000
R 526
C 2(LV)
R 143
C 3(FR)
R 7
C 4(BL)
R 10+

GL 7089
NR 1000
R 526
C 2(LV)
R 143
C 3(FR)
R 7
C 4(BL)
R 10+

GL 7089
NR 1000
R 526
C 2(LV)
R 143
C 3(FR)
R 7
C 4(BL)
R 10+

GL 7089
NR 1000
R 526
C 2(LV)
R 143
C 3(FR)
R 7
C 4(BL)
R 10+

GL 7089
NR 1000
R 526
C 2(LV)
R 143
C 3(FR)
R 7
C 4(BL)
R 10+

GL 7089
NR 1000
R 526
C 2(LV)
R 143
C 3(FR)
R 7
C 4(BL)
R 10+

GL 7089
NR 1000
R 526
C 2(LV)
R 143
C 3(FR)
R 7
C 4(BL)
R 10+

GL 7089
NR 1000
R 526
C 2(LV)
R 143
C 3(FR)
R 7
C 4(BL)
R 10+

GL 7089
NR 1000
R 526
C 2(LV)
R 143
C 3(FR)
R 7
C 4(BL)
R 10+

GL 7089
NR 1000
R 526
C 2(LV)
R 143
C 3(FR)
R 7
C 4(BL)
R 10+

GL 7089
NR 1000
R 526
C 2(LV)
R 143
C 3(FR)
R 7
C 4(BL)
R 10+

GL 7089
NR 1000
R 526
C 2(LV)
R 143
C 3(FR)
R 7
C 4(BL)
R 10+

GL 7089
NR 1000
R 526
C 2(LV)
R 143
C 3(FR)
R 7
C 4(BL)
R 10+

GL 7089
NR 1000
R 526
C 2(LV)
R 143
C 3(FR)
R 7
C 4(BL)
R 10+

GL 7089
NR 1000
R 526
C 2(LV)
R 143
C 3(FR)
R 7
C 4(BL)
R 10+

GL 7089
NR 1000
R 526
C 2(LV)
R 143
C 3(FR)
R 7
C 4(BL)
R 10+

GL 7089
NR 1000
R 526
C 2(LV)
R 143
C 3(FR)
R 7
C 4(BL)
R 10+

GL 7089
NR 1000
R 526
C 2(LV)
R 143
C 3(FR)
R 7
C 4(BL)
R 10+

GL 7089
NR 1000
R 526
C 2(LV)
R 143
C 3(FR)
R 7
C 4(BL)
R 10+

GL 7089
NR 1000
R 526
C 2(LV)
R 143
C 3(FR)
R 7
C 4(BL)
R 10+

GL 7089
NR 1000
R 526
C 2(LV)
R 143
C 3(FR)
R 7
C 4(BL)
R 10+

GL 7089
NR 1000
R 526
C 2(LV)
R 143
C 3(FR)
R 7
C 4(BL)
R 10+

GL 7089
NR 1000
R 526
C 2(LV)
R 143
C 3(FR)
R 7
C 4(BL)
R 10+

GL 7089
NR 1000
R 526
C 2(LV)
R 143
C 3(FR)
R 7
C 4(BL)
R 10+

GL 7089
NR 1000
R 526
C 2(LV)
R 143
C 3(FR)
R 7
C 4(BL)
R 10+

GL 7089
NR 1000
R 526
C 2(LV)
R 143
C 3(FR)
R 7
C 4(BL)
R 10+

GL 7089
NR 1000
R 526
C 2(LV)
R 143
C 3(FR)
R 7
C 4(BL)
R 10+

GL 7089
NR 1000
R 526
C 2(LV)
R 143
C 3(FR)
R 7
C 4(BL)
R 10+

GL 7089
NR 1000
R 526
C 2(LV)
R 143
C 3(FR)
R 7
C 4(BL)
R 10+

GL 7089
NR 1000
R 526
C 2(LV)
R 143
C 3(FR)
R 7
C 4(BL)
R 10+

GL 7089
NR 1000
R 526
C 2(LV)
R 143
C 3(FR)
R 7
C 4(BL)
R 10+

GL 7089
NR 1000
R 526
C 2(LV)
R 143
C 3(FR)
R 7
C 4(BL)
R 10+

GL 7089
NR 1000
R 526
C 2(LV)
R 143
C 3(FR)
R 7
C 4(BL)
R 10+

GL 7089
NR 1000
R 526
C 2(LV)
R 143
C 3(FR)
R 7
C 4(BL)
R 10+

GL 7089
NR 1000
R 526
C 2(LV)
R 143
C 3(FR)
R 7
C 4(BL)
R 10+

GL 7089
NR 1000
R 526
C 2(LV)
R 143
C 3(FR)
R 7
C 4(BL)
R 10+

GL 7089
NR 1000
R 526
C 2(LV)
R 143
C 3(FR)
R 7
C 4(BL)
R 10+

GL 7089
NR 1000
R 526
C 2(LV)
R 143
C 3(FR)
R 7
C 4(BL)
R 10+

GL 7089
NR 1000
R 526
C 2(LV)
R 143
C 3(FR)
R 7
C 4(BL)
R 10+

GL 7089
NR 1000
R 526
C 2(LV)
R 143
C 3(FR)
R 7
C 4(BL)
R 10+

GL 7089
NR 1000
R 526
C 2(LV)
R 143
C 3(FR)
R 7
C 4(BL)
R 10+

GL 7089
NR 1000
R 526
C 2(LV)
R 143
C 3(FR)
R 7
C 4(BL)
R 10+

GL 7089
NR 1000
R 526
C 2(LV)
R 143
C 3(FR)
R 7
C 4(BL)
R 10+

GL 7089
NR 1000
R 526
C 2(LV)
R 143
C 3(FR)
R 7
C 4(BL)
R 10+

GL 7089
NR 1000
R 526
C 2(LV)
R 143
C 3(FR)
R 7
C 4(BL)
R 10+

GL 7089
NR 1000
R 526
C 2(LV)
R 143
C 3(FR)
R 7
C 4(BL)
R 10+

GL 7089
NR 1000
R 526
C 2(LV)
R 143
C 3(FR)
R 7
C 4(BL)
R 10+

GL 7089
NR 1000
R 526
C 2(LV)
R 143
C 3(FR)
R 7
C 4(BL)
R 10+

GL 7089
NR 1000
R 526
C 2(LV)
R 143
C 3(FR)
R 7
C 4(BL)
R 10+

GL 7089
NR 1000
R 526
C 2(LV)
R 143
C 3(FR)
R 7
C 4(BL)
R 10+

GL 7089
NR 1000
R 526
C 2(LV)
R 143
C 3(FR)
R 7
C 4(BL)
R 10+

GL 7089
NR 1000
R 526
C 2(LV)
R 143
C 3(FR)
R 7
C 4(BL)
R 10+

GL 7089
NR 1000
R 526
C 2(LV)
R 143
C 3(FR)
R 7
C 4(BL)
R 10+

GL 7089
NR 1000
R 526
C 2(LV)
R 143
C 3(FR)
R 7
C 4(BL)
R 10+

GL 7089
NR 1000
R 526
C 2(LV)
R 143
C 3(FR)
R 7
C 4(BL)
R 10+

GL 7089
NR 1000
R 526
C 2(LV)
R 143
C 3(FR)
R 7
C 4(BL)
R 10+

GL 7089
NR 1000
R 526
C 2(LV)
R 143
C 3(FR)
R 7
C 4(BL)
R 10+

GL 7089
NR 1000
R 526
C 2(LV)
R 143
C 3(FR)
R 7
C 4(BL)
R 10+

GL 7089
NR 1000
R 526
C 2(LV)
R 143
C 3(FR)
R 7
C 4(BL)
R 10+

GL 7089
NR 1000
R 526
C 2(LV)
R 143
C 3(FR)
R 7
C 4(BL)
R 10+

GL 7089
NR 1000
R 526
C 2(LV)
R 143
C 3(FR)
R 7
C 4(BL)
R 10+

GL 7089
NR 1000
R 526
C 2(LV)
R 143
C 3(FR)
R 7
C 4(BL)
R 10+

GL 7089
NR 1000
R 526
C 2(LV)
R 143
C 3(FR)
R 7
C 4(BL)
R 10+