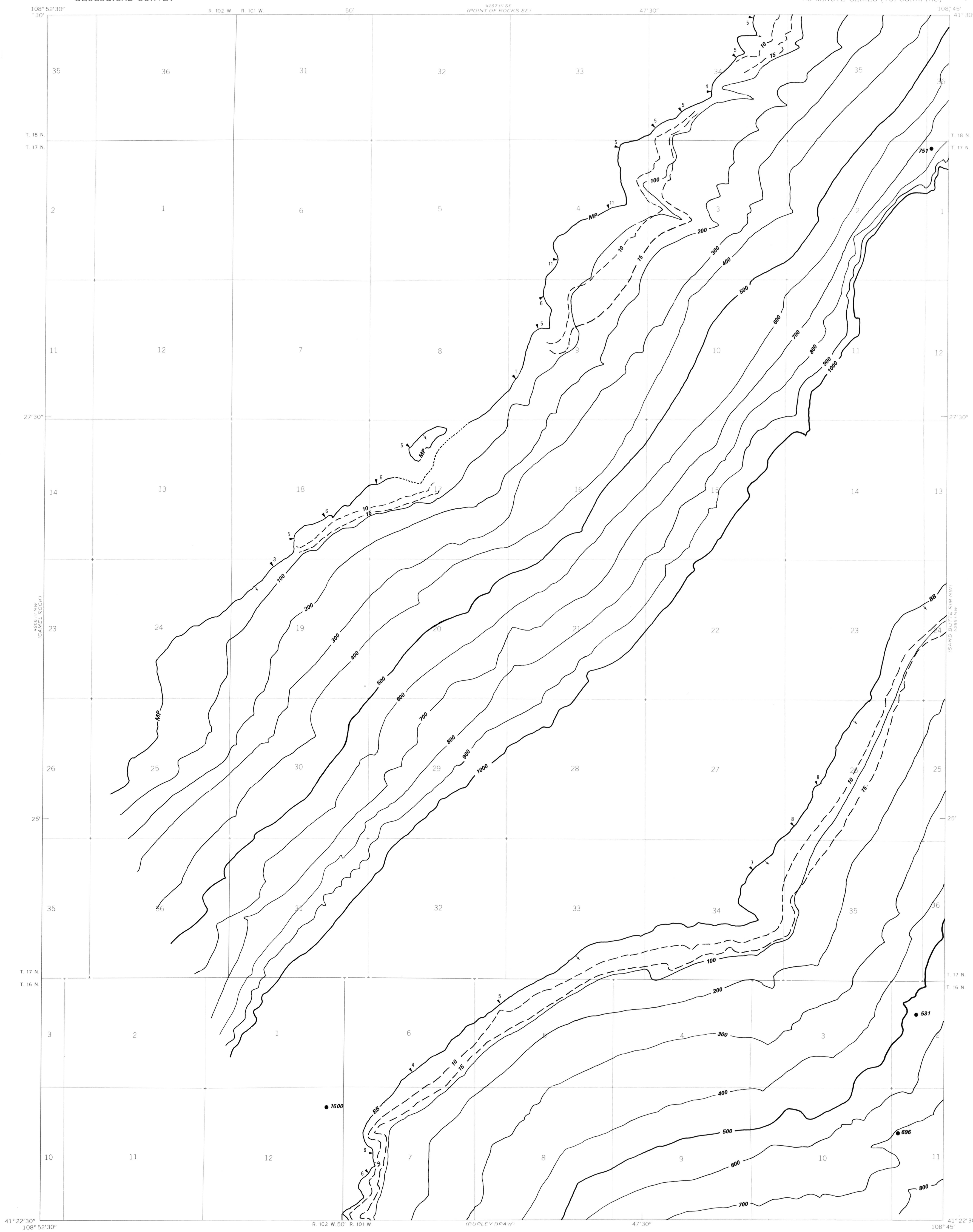


OPEN FILE REPORT
This report has not been edited for conformity with U.S. Geological Survey editorial standards or stratigraphic nomenclature.

OPEN FILE REPORT 78-033
PLATE 6 OF 25



EXPLANATION

TRACE OF COAL BED OUTCROP—
Arrow points to the coal bearing area. Letters designate name of coal bed.
BB—Big Burn
MP—Magpie

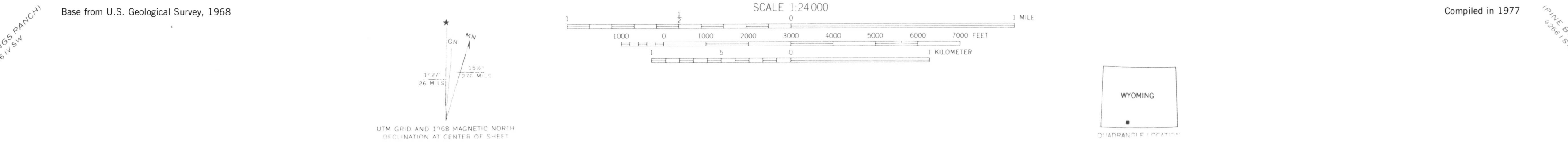
COAL BED SYMBOLS AND NAMES

OVERBURDEN ISOPACHS—Showing thickness of overburden in feet from the surface to the top of the Big Burn (BB) and Magpie (MP) coal beds. Isopach interval 100 feet.

DRILL HOLE—Showing overburden thickness (in feet) from the surface to the top of the coal bed.

MINING-RATIO CONTOUR—Number indicates cubic yards of overburden per ton of recoverable coal by surface-mining methods.

To convert feet to meters multiply feet by 0.3048.



**COAL RESOURCE OCCURRENCE AND COAL DEVELOPMENT POTENTIAL MAPS OF
THE COOPER RIDGE NE QUADRANGLE, SWEETWATER COUNTY, WYOMING**
BY
WALTER DANILCHIK
1978

PLATE 6
OVERBURDEN AND MINING
RATIO MAP OF THE
BIG BURN AND MAGPIE
COAL BEDS