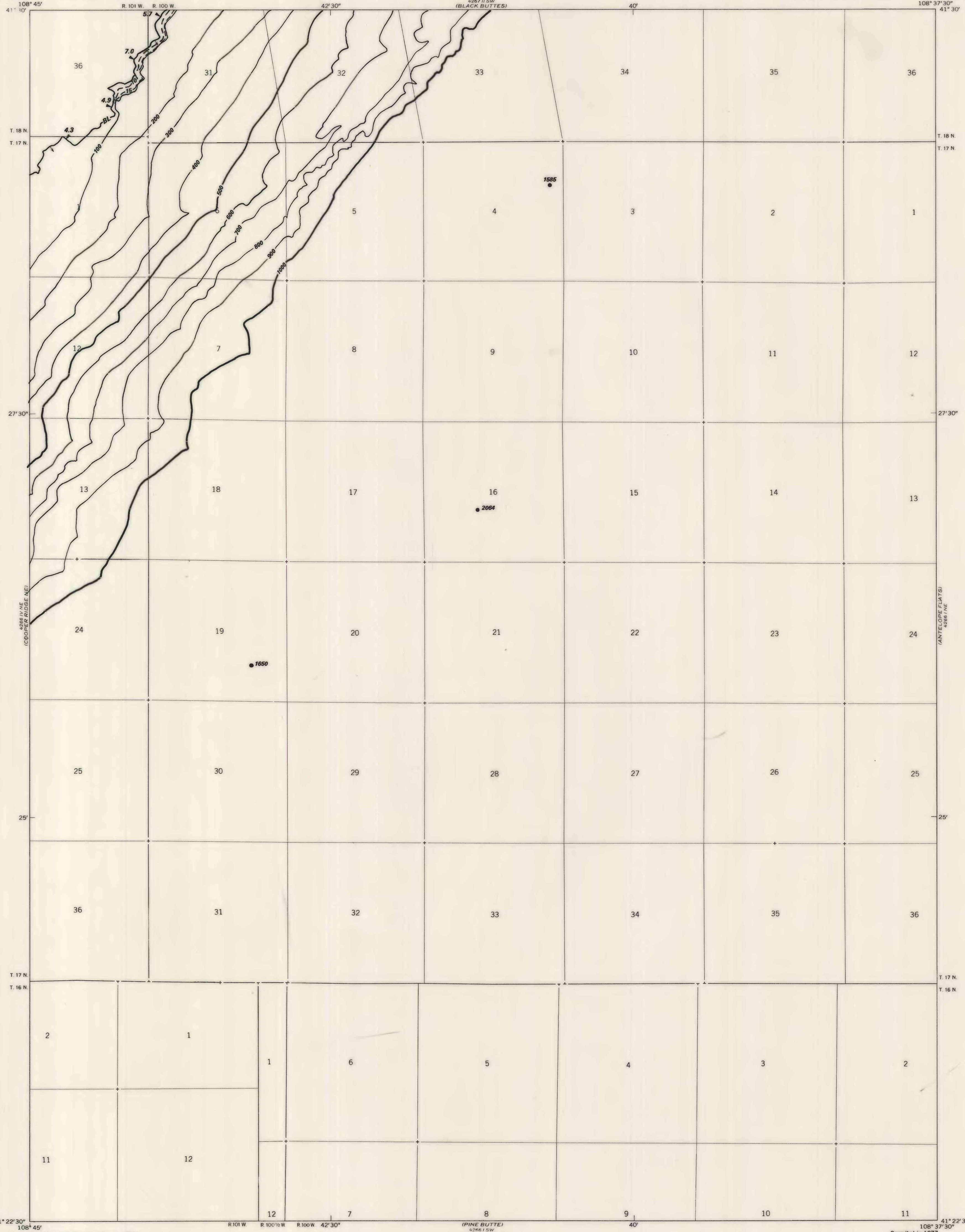


OPEN-FILE REPORT
This report has not been edited for conformity with U.S. Geological Survey editorial standards or stratigraphic nomenclature.
OPEN FILE REPORT 78-034
PLATE 12 OF 18



EXPLANATION

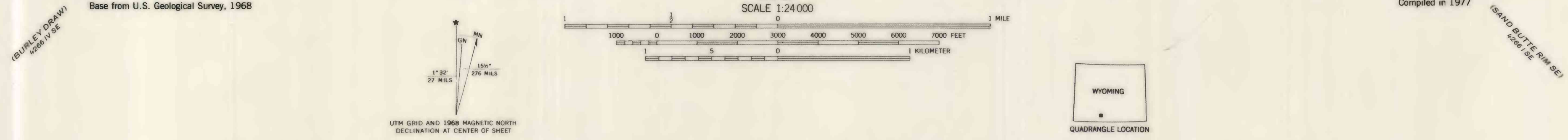
— BL —
TRACE OF OUTCROP OF THE BIG BURN (BB) COAL BED—Arrows point toward coal-bearing area.

— 500 —
— 400 —
OVERBURDEN ISOPACHS—Showing thickness of overburden, in feet, from the surface to top of the Bluff (BL) coal bed. Isopach interval 100 feet (30.5 m).

● 1650
● 2064
DRILL HOLE—Showing thickness of overburden, in feet, from the surface to top of the Bluff (BL) coal bed.

— 10 —
MINING-RATIO CONTOUR FOR THE BLUFF (BL) COAL BED—Number indicates cubic yards of overburden per ton of recoverable coal by surface-mining methods. Contours shown only in areas suitable for surface mining within the stripping limit.

To convert feet to meters, multiply feet by 0.3048.



COAL RESOURCE OCCURRENCE AND COAL DEVELOPMENT POTENTIAL MAPS OF THE SAND BUTTE RIM NW QUADRANGLE, SWEETWATER COUNTY, WYOMING

By
WALTER DANILCHIK
1978

PLATE 12
OVERBURDEN ISOPACH AND MINING-RATIO
MAP OF THE BLUFF
COAL BED