

OPEN FILE REPORT  
This report has not been edited for conformity with U.S. Geological Survey editorial standards or stratigraphic nomenclature.

OPEN FILE REPORT 78-035  
PLATE 8 OF 14

EXPLANATION

— UG —  
TRACE OF OUTCROP OF THE UPPER GULL (UG) COAL BED—Arrow points to the coal-bearing area.

— 500 —  
— 400 —  
OVERBURDEN ISOPACHS—Showing thickness of overburden in feet, from the surface to the top of the Upper Gull (UG) coal bed. Isopach interval 100 ft.

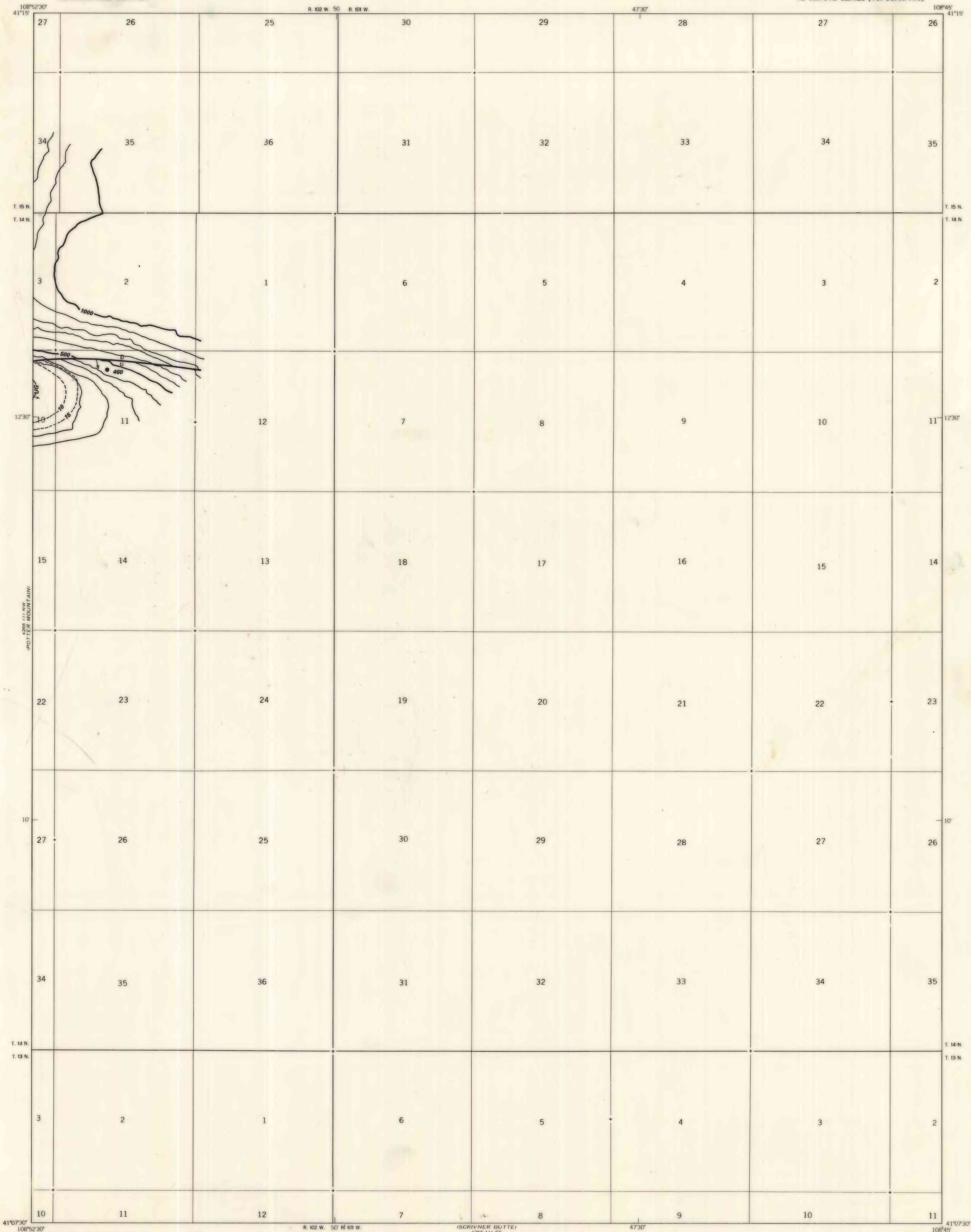
----- 10 -----  
MINING RATIO CONTOUR FOR THE UPPER GULL (UG) COAL BED—Number indicates cubic yards of overburden per ton of recoverable coal by surface-mining methods. Contours shown only in areas suitable for surface mining within the stripping limit.

• 460  
DRILL HOLE—Showing thickness of overburden, in feet, from the surface to the top of the coal bed.

U D  
FAULT—Showing direction of dip. U, up-thrown side; D, downthrown side.

To convert feet to meters, multiply feet by 0.3048.

To convert yds<sup>3</sup>/ton to m<sup>3</sup>/metric ton, multiply by 0.842.



COAL RESOURCE OCCURRENCE AND COAL DEVELOPMENT POTENTIAL MAPS OF THE ERICKSON-KENT RANCH  
QUADRANGLE, SWEETWATER COUNTY, WYOMING

BY  
H. W. ROEHLER  
1978

PLATE 8  
OVERBURDEN AND MINING RATIO  
MAP OF THE UPPER GULL COAL BED