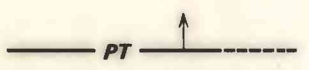
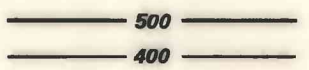


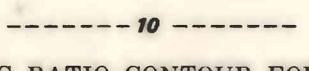
OPEN FILE REPORT  
This report has not been edited for conformity with U.S. Geological Survey editorial standards or stratigraphic nomenclature.

OPEN FILE REPORT 78-036  
PLATE 9 OF 12

EXPLANATION

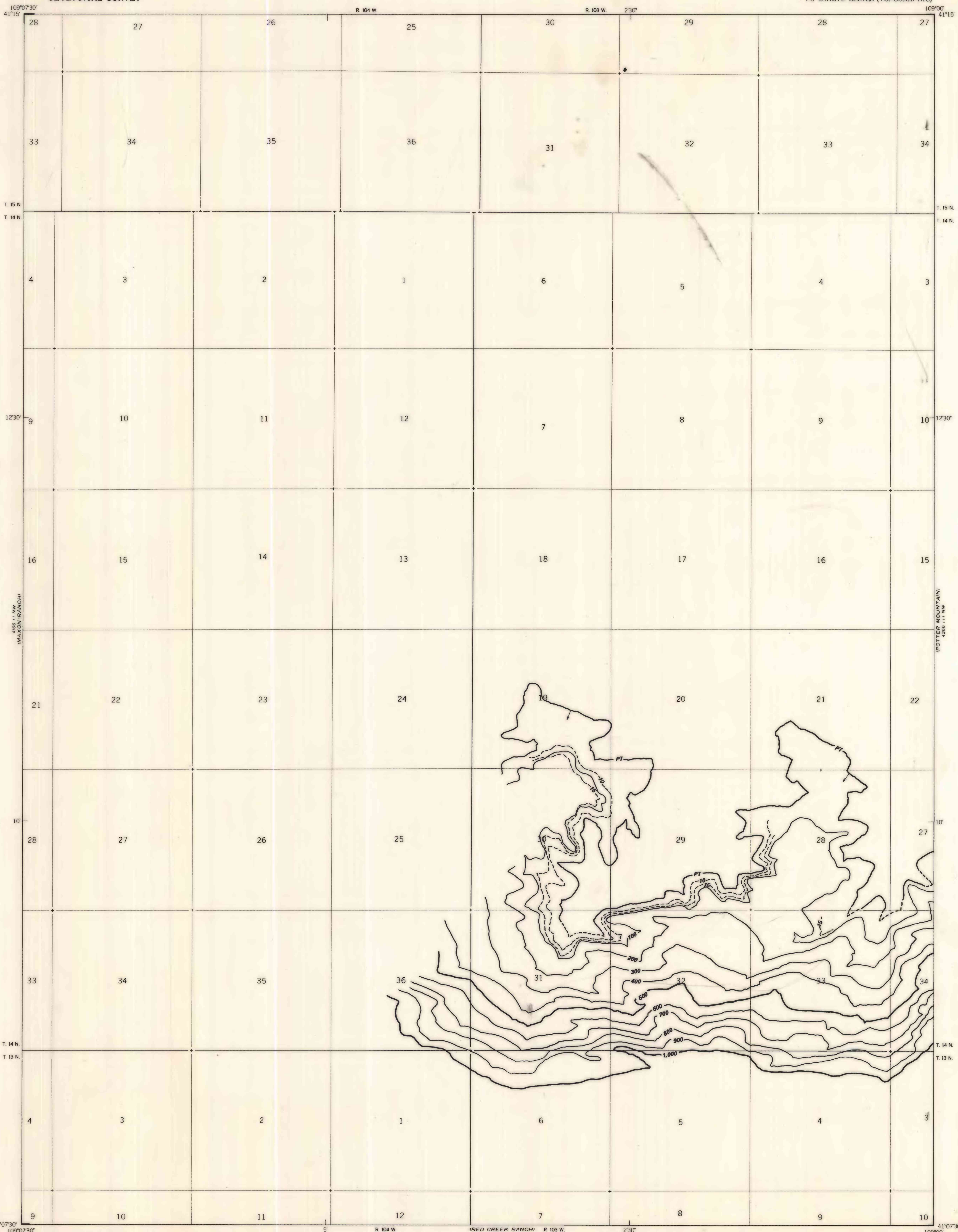
 PT  
TRACE OF OUTCROP OF THE PINTAIL (PT) COAL BED—Dashed where concealed. Arrow points to the coal-bearing area.

 500  
400  
OVERBURDEN ISOPACHS—Showing thickness of overburden, in feet from the surface to the top of the Pintail (PT) coal bed. Isopach interval 100 ft.

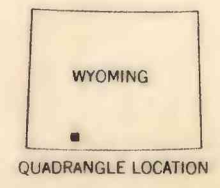
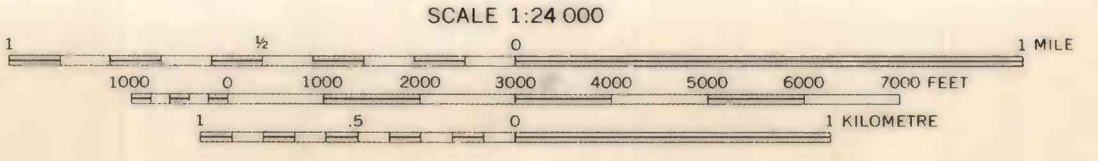
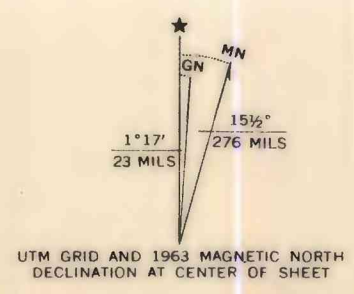
 10  
MINING RATIO CONTOUR FOR THE PINTAIL (PT) COAL BED—Number indicates cubic yards of overburden per ton of recoverable coal by surface-mining methods. Contours shown only in areas suitable for surface mining within the stripping limit.

To convert feet to meters, multiply feet by 0.3048.

To convert yds<sup>3</sup>/ton to m<sup>3</sup>/metric ton, multiply by 0.842.



41°07'30" 109°07'30" Base from U.S. Geological Survey, 1963  
R. 104 W. (RED CREEK RANCH) 416.11 SE R. 103 W. 230' 109°00' 41°07'30" Compiled in 1977



**COAL RESOURCE OCCURRENCE AND COAL DEVELOPMENT POTENTIAL MAPS OF THE TITSWORTH GAP QUADRANGLE, SWEETWATER COUNTY, WYOMING**

BY  
H. W. ROEHLER  
1978

PLATE 9  
OVERBURDEN AND MINING RATIO MAP OF THE PINTAIL COAL BED