
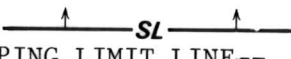


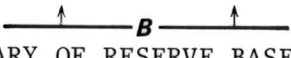
OPEN FILE REPORT
This report has not been edited for conformity with U.S. Geological Survey editorial standards or stratigraphic nomenclature.

OPEN FILE REPORT 78-041
PLATE 7 OF 34

EXPLANATION

 NON-FEDERAL COAL LAND--Land for which the Federal Government does not own the coal rights.

 STRIPPING LIMIT LINE--Boundary for surface mining on the coal bed (in this quadrangle, the 200-foot-overburden isopach). Arrows point toward the area suitable for surface mining. Recovery factor 85 percent within that area in this quadrangle.

 BOUNDARY OF RESERVE BASE COAL--Drawn along the outcrop of coal bed or the contact between burned and unburned coal where the coal bed is 5 feet (1.5 m) or more thick, and the 5-foot (1.5-m) coal isopach. Arrows point toward area of Reserve Base coal.

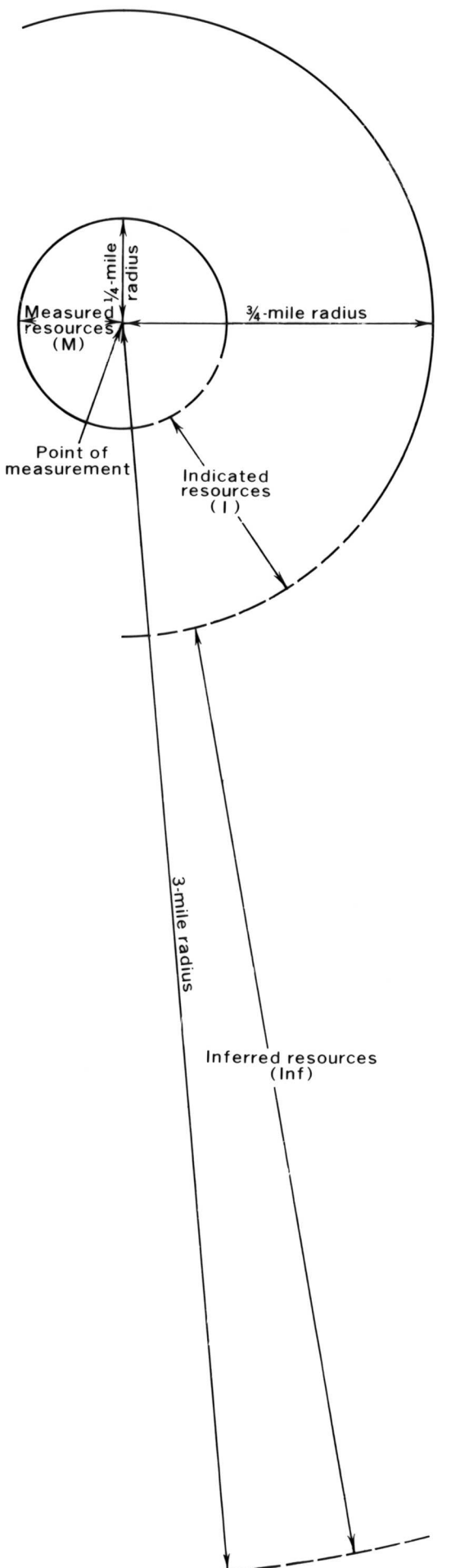
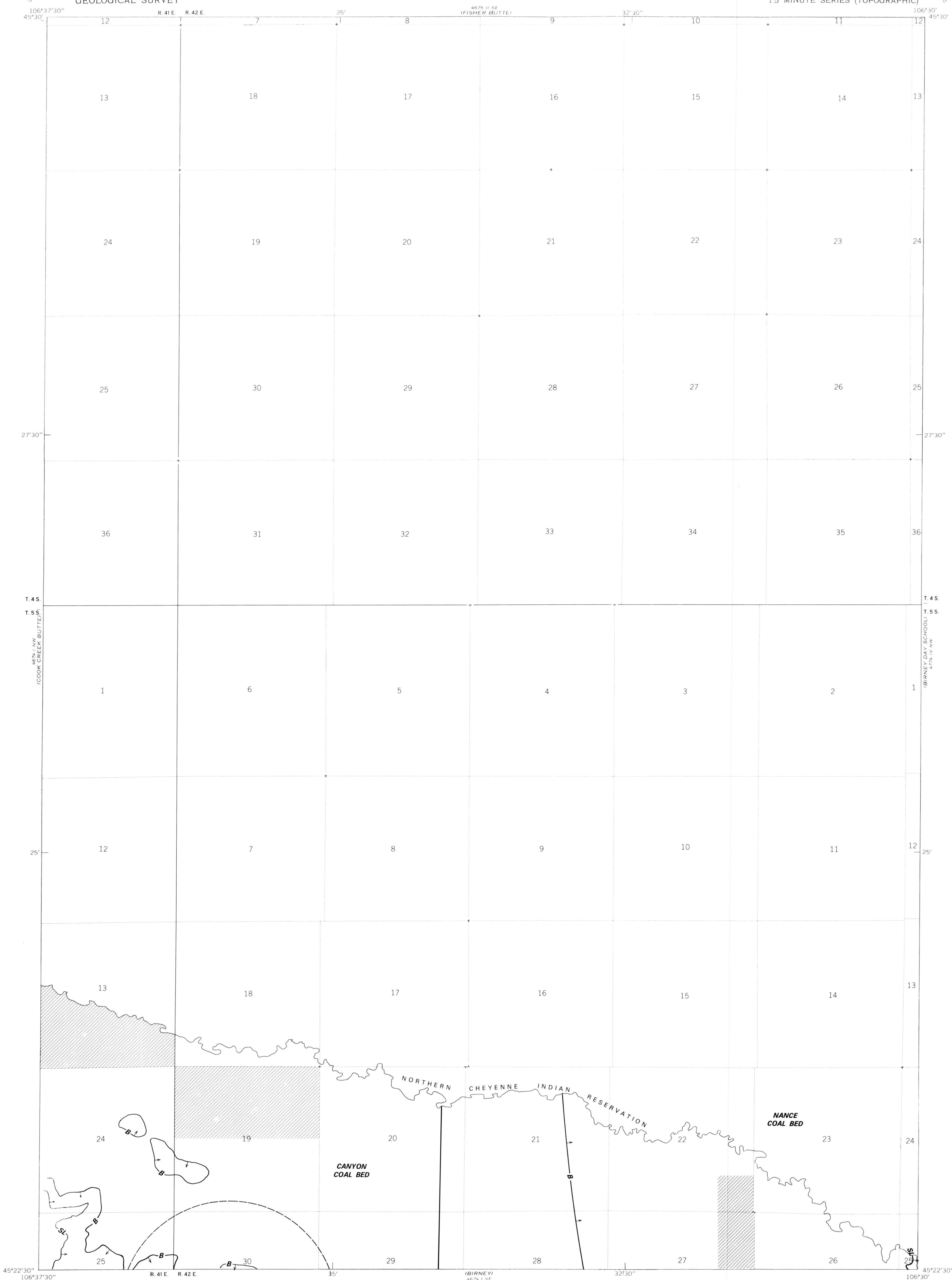
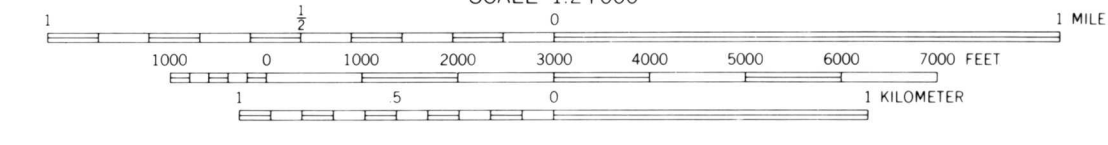
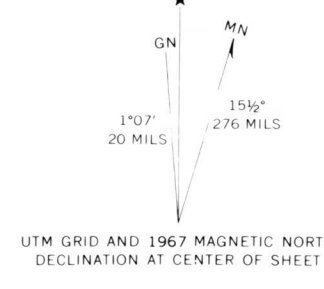


DIAGRAM SHOWING COMPONENT AREAS OF IDENTIFIED COAL RESOURCES--Shows arcuate boundary lines enclosing areas of measured, indicated, and inferred coal resources. Boundaries of areas are dashed where projected from an adjacent quadrangle. Areas of inferred resources may be present on this map without their outer boundaries being shown.

To convert miles to kilometers, multiply miles by 1.6.



Base from U.S. Geological Survey, 1967



COAL RESOURCE OCCURRENCE AND COAL DEVELOPMENT POTENTIAL MAPS OF THE SOUTHERN PART OF THE CLUBFOOT CREEK QUADRANGLE, ROSEBUD COUNTY, MONTANA

BY
W. J. MAPEL AND B. K. MARTIN
1978

PLATE 7
AREAL DISTRIBUTION OF IDENTIFIED RESOURCES OF THE CANYON AND NANCE COAL BEDS