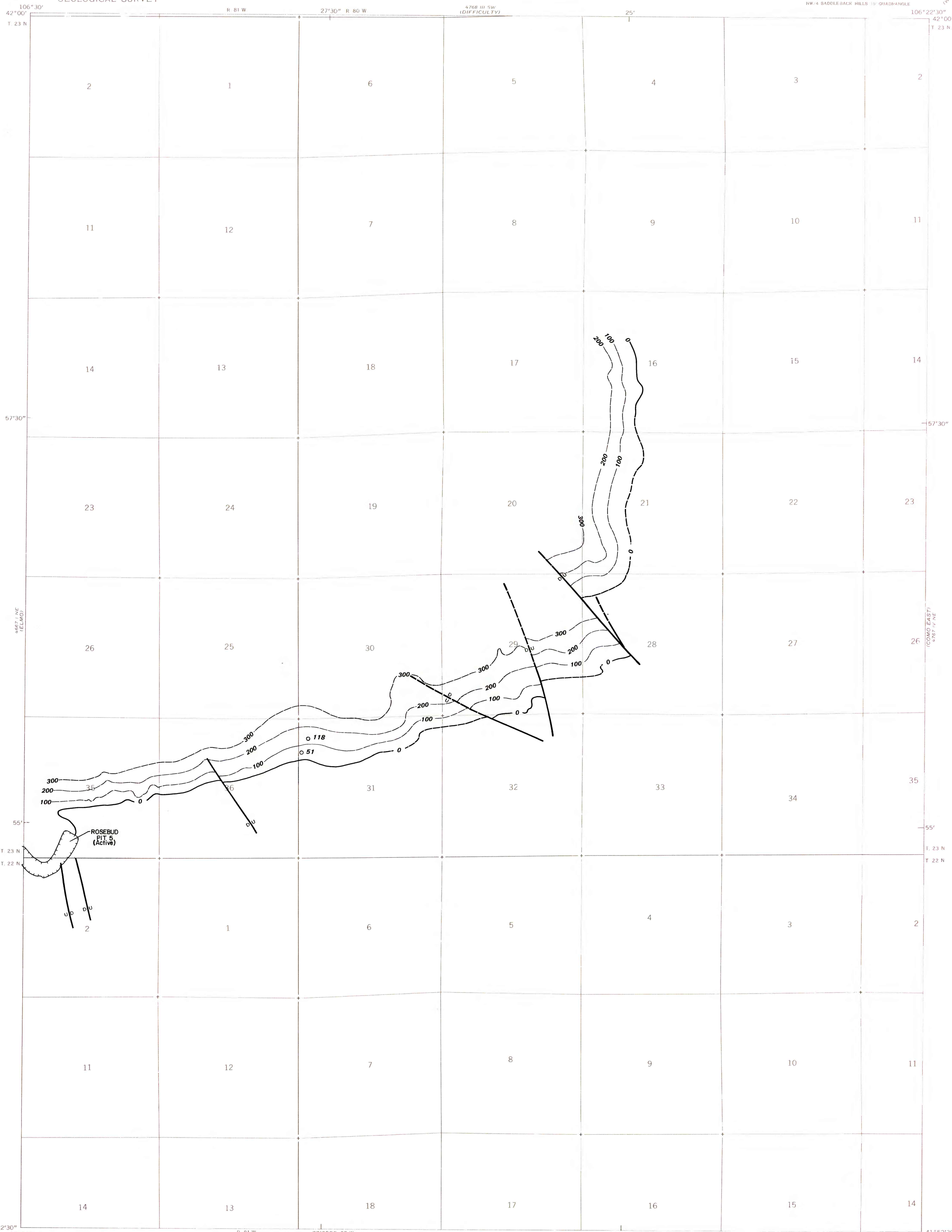


UNITED STATES
DEPARTMENT OF THE INTERIOR
GEOLOGICAL SURVEY

COMO WEST QUADRANGLE
WYOMING-CARBON CO.
7.5 MINUTE SERIES (TOPOGRAPHIC)
NW/4 SADDLEBACK HILLS 10' QUADRANGLE



EXPLANATION

0
100

OVERBURDEN ISOPACH—Showing thickness of overburden, in feet, from the surface to the top of the coal bed. Isopach interval 100 feet (30.4m). Dashed where inferred.

○ 51

DRILL HOLE—Showing thickness of overburden, in feet, from the surface to the top of the coal bed. Drill holes which do not intersect top of coal bed or from which bed elevation could not be determined are not shown.

U
D

FAULT—Dashed where approximately located. U, upthrown side; D, downthrown side.

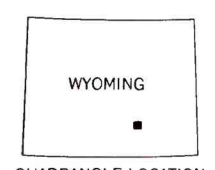
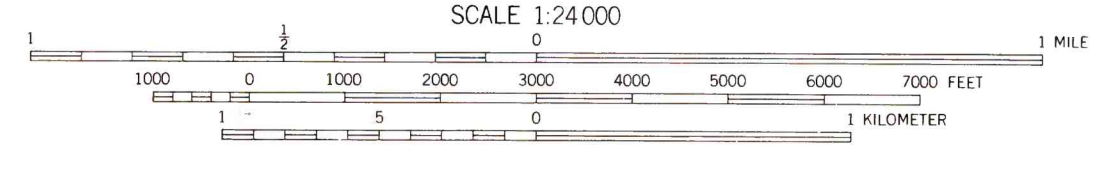
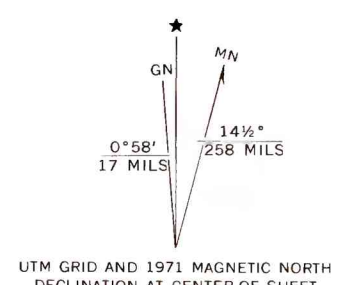


STRIP MINE

To convert feet to meters, multiply feet by 0.3048.

Base map from U.S. Geological Survey, 1971

Compiled in 1977 by TEXAS INSTRUMENTS INCORPORATED



COAL RESOURCE OCCURRENCE MAP OF THE COMO WEST QUADRANGLE,
CARBON COUNTY, WYOMING

BY
TEXAS INSTRUMENTS INCORPORATED
1978