

UNITED STATES  
 DEPARTMENT OF THE INTERIOR  
 GEOLOGICAL SURVEY

COMO WEST QUADRANGLE  
 WYOMING—CARBON CO.  
 7.5 MINUTE SERIES (TOPOGRAPHIC)  
 NW 1/4 SADDLEBACK HILLS 15' QUADRANGLE

WINDY HILL  
 (WINDY HILL)

EXPLANATION

6500  
 6600

STRUCTURE CONTOURS—Drawn on top of coal bed. Dashed where inferred. Contour interval 100 feet (30.4m).

6748

DRILL HOLE—Showing elevation of top of coal bed, in feet. Drill holes which did not intersect top of coal bed or from which bed elevation could not be determined are not shown.

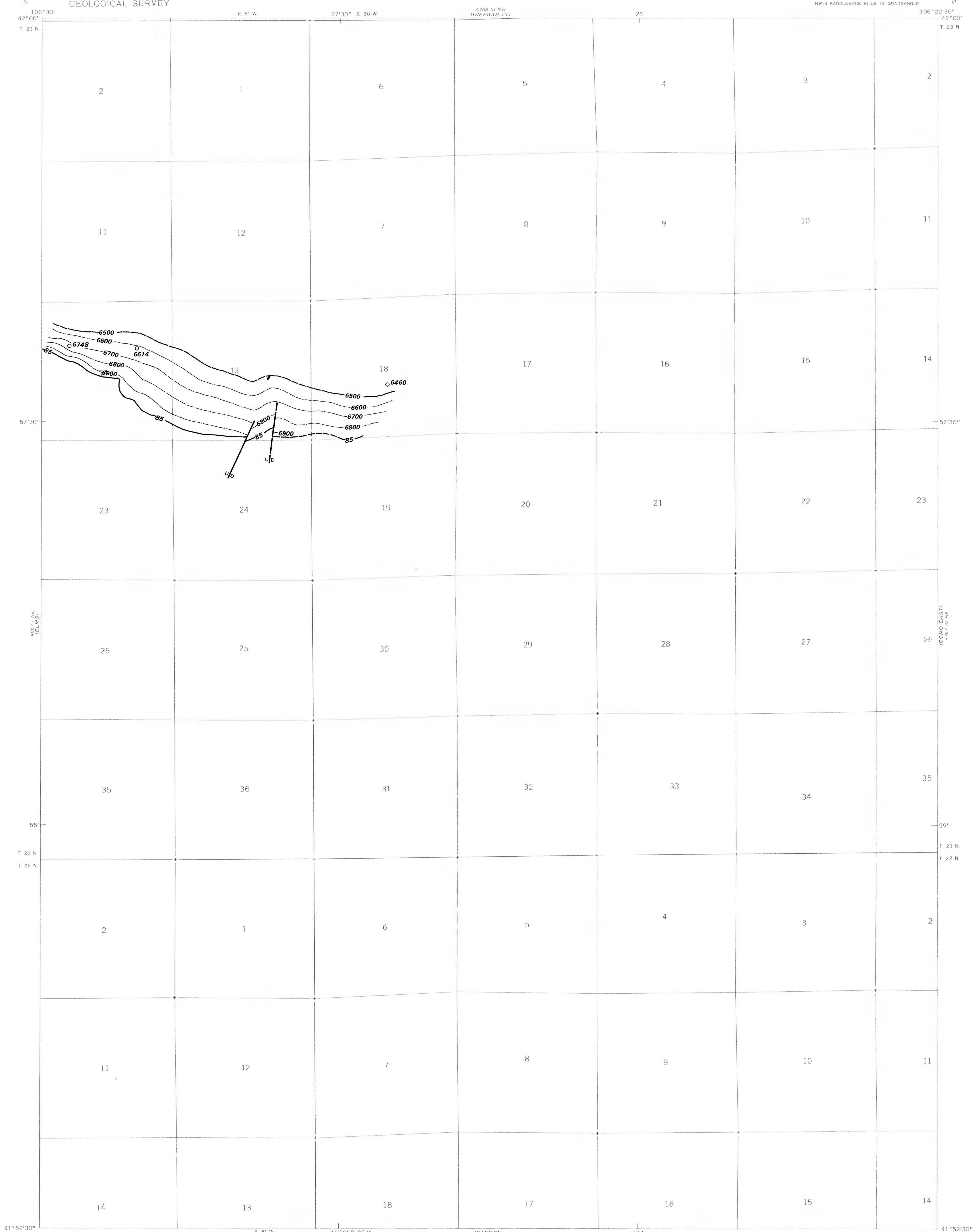
85

TRACE OF COAL BED OUTCROP—Showing name of coal bed. Dashed where inferred.

U  
 D

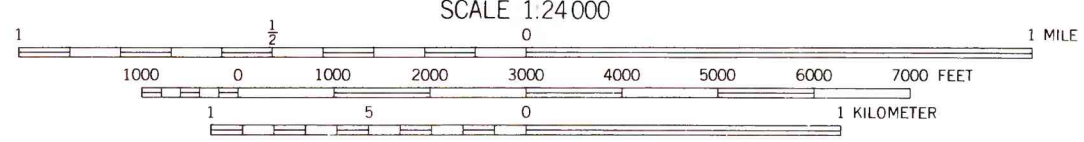
FAULT—Dashed where approximately located. U, upthrown side; D, downthrown side.

To convert feet to meters,  
 multiply feet by 0.3048.

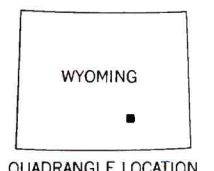
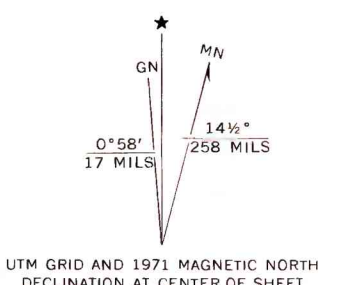


Base map from U.S. Geological Survey, 1971

SCALE 1:24,000



Compiled in 1977 by TEXAS INSTRUMENTS INCORPORATED



COAL RESOURCE OCCURRENCE MAP OF THE COMO WEST QUADRANGLE,  
 CARBON COUNTY, WYOMING

BY  
 TEXAS INSTRUMENTS INCORPORATED  
 1978