

UNITED STATES  
 DEPARTMENT OF THE INTERIOR  
 GEOLOGICAL SURVEY

COMO WEST QUADRANGLE  
 WYOMING—CARBON CO.  
 7.5 MINUTE SERIES (TOPOGRAPHIC)  
 RW-4 SADDLEBACK HILLS 15' QUADRANGLE

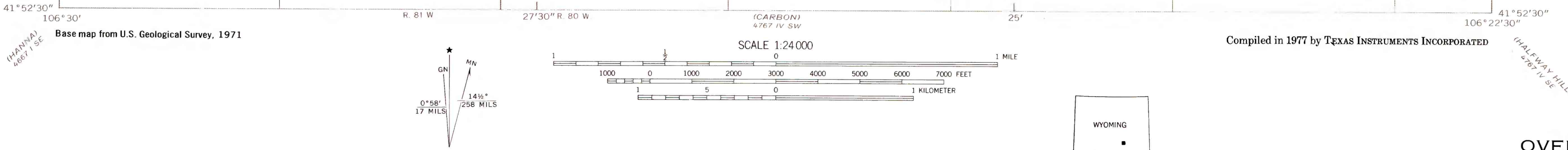
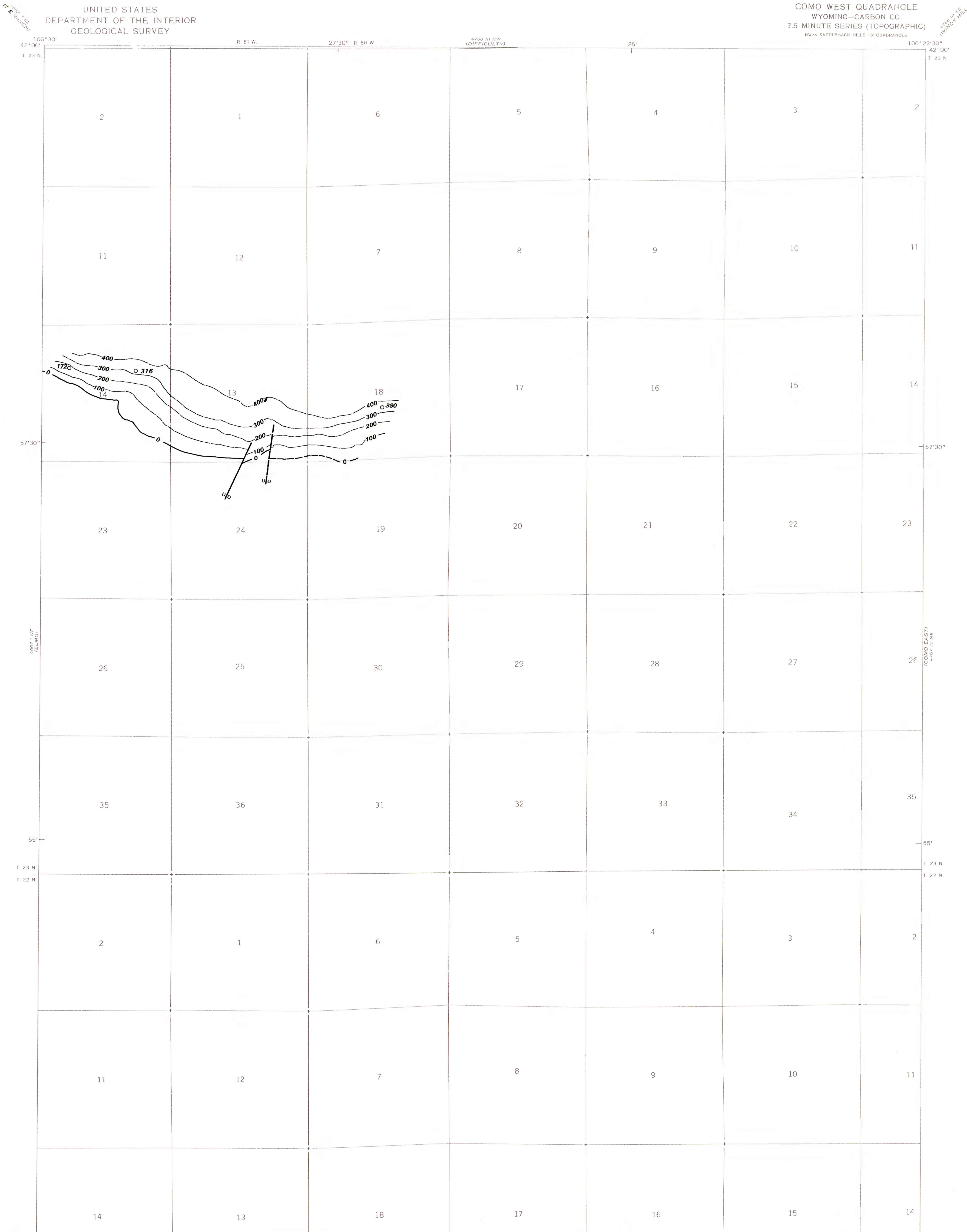
EXPLANATION

— 0 —  
 — 100 —  
 OVERBURDEN ISOPACH—Showing thickness of overburden, in feet, from the surface to the top of the coal bed. Isopach interval 100 feet (30.4m). Dashed where inferred.

○ 316  
 DRILL HOLE—Showing thickness of overburden, in feet, from the surface to the top of the coal bed. Drill holes which do not intersect top of coal bed or from which bed elevation could not be determined are not shown.

— U —  
 — D —  
 FAULT—Dashed where approximately located. U, upthrown side; D, downthrown side.

To convert feet to meters,  
 multiply feet by 0.3048.



COAL RESOURCE OCCURRENCE MAP OF THE COMO WEST QUADRANGLE,  
 CARBON COUNTY, WYOMING  
 BY  
 TEXAS INSTRUMENTS INCORPORATED  
 1978